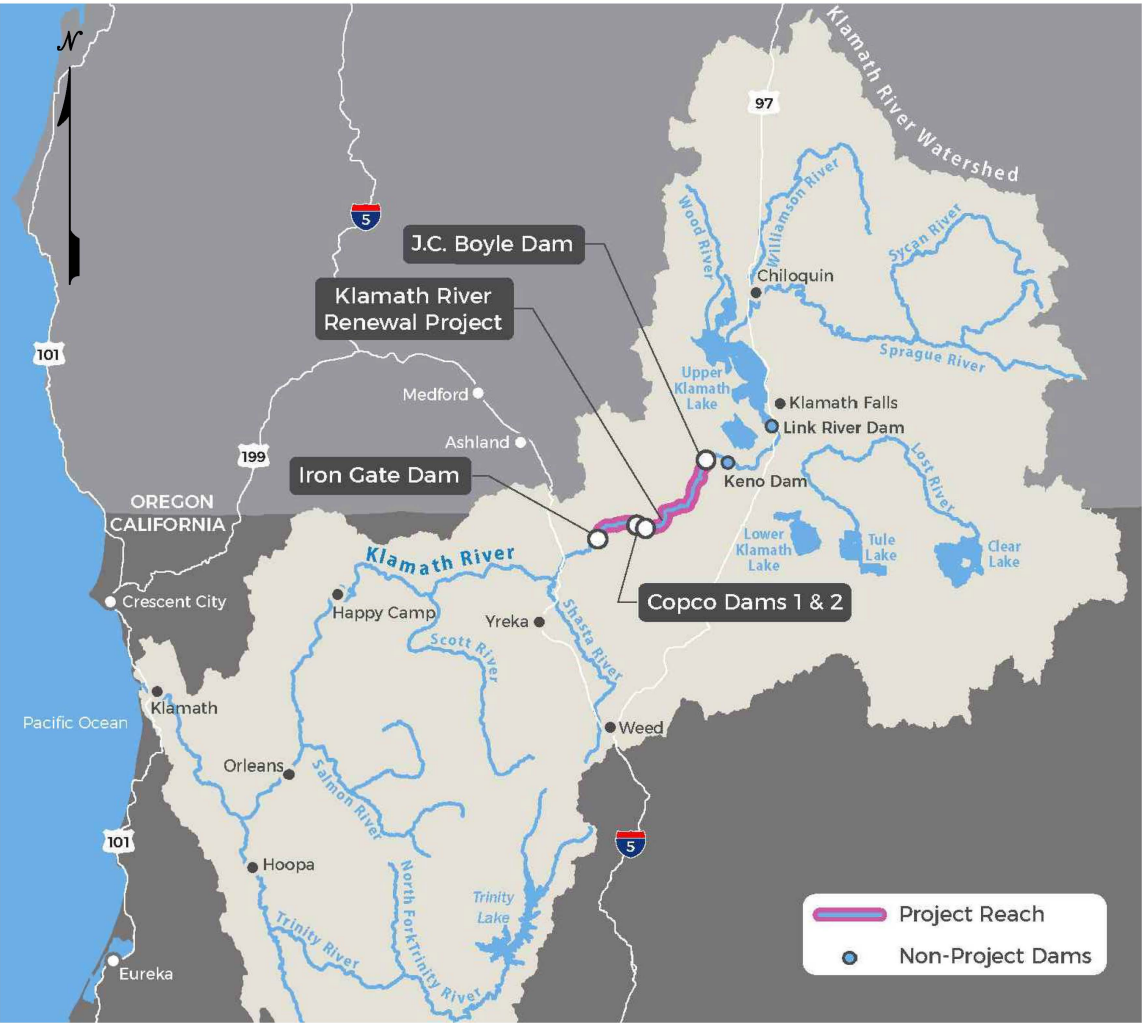


ATTACHMENT A

KLAMATH RIVER
RENEWAL PROJECT
KIEWIT CONTRACT #104168

60% DESIGN COMPLETION DRAWINGS

JACKSON COUNTY, OREGON
KLAMATH COUNTY, OREGON
SISKIYOU COUNTY, CALIFORNIA



LOCATION MAP
NOT TO SCALE

FOR INFORMATION ONLY

PRELIMINARY DESIGN (NOT FOR CONSTRUCTION)

D	ISSUED WITH 60% DESIGN REPORT	CBN	NB	SRM	02/07/20
C	ISSUED WITH DRAFT 60% DESIGN REPORT	CBN	NB	SRM	12/17/19
B	UPDATED FOR 30% DESIGN REPORT	CBN	NB	SRM	10/17/19
A	ISSUED WITH DRAFT 30% DESIGN REPORT	CBN	NB	SRM	08/27/19
REV	DESCRIPTION	BY	CHK	APP	DATE

WARNING
0 1/2 1
IF THIS BAR DOES NOT MEASURE 1" THEN DRAWING IS NOT TO SCALE



DESIGNED	C. NIAMIR
DRAWN	W. LAHODA
REVIEWED	N. BISHOP
IN CHARGE	S. YONG
APPROVED	S. MOTTRAM



PROJECT	KLAMATH RIVER RENEWAL PROJECT	PROJ #	VA103-640/1
		DATE	02/07/2020
SHEET TITLE	TITLE SHEET	DWG	G0001

\\csl\csl\proj\104168\G0001\G0001.dwg
02/07/2020 10:28:51
W. LAHODA




C1320	POWER CANAL – CONCRETE REMOVAL PLAN
C1321	POWER CANAL – OPTION 1 REMOVAL SECTIONS
C1322	POWER CANAL – OPTION 2 REMOVAL SECTIONS
C1323	POWER CANAL – TYPICAL ANIMAL CROSSING SECTIONS
C1330	POWER CANAL FOREBAY – DEMOLITION AND GRADING PLAN
C1331	FOREBAY – PROFILE, SECTIONS AND DETAILS
C1332	FOREBAY – FINAL GRADING PLAN
C1333	FOREBAY – FINAL GRADING SECTIONS
C1340	SPILLWAY SCOUR HOLE – OPTION 1 REGRADING PLAN
C1341	SPILLWAY SCOUR HOLE – OPTION 1 REGRADING PROFILE AND SECTIONS
C1342	SPILLWAY SCOUR HOLE – OPTION 2 REGRADING PLAN
C1343	SPILLWAY SCOUR HOLE – OPTION 2 REGRADING PROFILE AND SECTIONS
C1350	PENSTOCK – DEMOLITION PLAN, PROFILE AND SECTIONS
C1351	PENSTOCK – DEMOLITION SECTIONS AND DETAILS
C1352	PENSTOCK – TUNNEL OUTLET PORTAL BARRIER SECTION AND DETAILS
C1400	POWERHOUSE AND TAILRACE – DEMOLITION PLAN
C1402	POWERHOUSE AND TAILRACE – PLAN AND SECTIONS
C1410	POWERHOUSE AND TAILRACE – FINAL GRADING PLAN
C1411	POWERHOUSE AND TAILRACE – GRADING SECTIONS
C1500	CONSTRUCTION ACCESS IMPROVEMENTS – KEY MAP
C1501	CONSTRUCTION ACCESS IMPROVEMENTS – RESERVOIR ROADS
C1510	CONSTRUCTION ACCESS IMPROVEMENTS – LEFT BANK ACCESS ROAD
C1511	CONSTRUCTION ACCESS IMPROVEMENTS – POWERHOUSE ROAD REALIGNMENT
C1512	CONSTRUCTION ACCESS IMPROVEMENTS – PENSTOCK ACCESS ROADS
	CIVIL – COPCO NO. 1 FACILITY
C2000	PROJECT OVERVIEW AND LIMITS OF WORK – KEY MAP
C2001	PROJECT OVERVIEW AND LIMITS OF WORK – PLAN
C2010	KLAMATH RIVER CHANNEL – PLAN AND PROFILE
C2050	RESERVOIR OPERATIONS – WATER SURFACE ELEVATIONS – SECTIONS
C2060	RESERVOIR OPERATIONS – HYDROLOGY – FIGURES
C2061	RESERVOIR OPERATIONS – HYDROLOGY – TABLE
C2100	DIVERSION TUNNEL MODIFICATION – PLAN AND PROFILE
C2101	DIVERSION TUNNEL INTAKE STRUCTURE REMOVAL – ELEVATION AND PROFILE
C2160	DIVERSION TUNNEL APPROACH CHANNEL EXCAVATION – PLAN, PROFILE AND SECTION
C2175	DIVERSION TUNNEL PLUG – PLAN AND SECTIONS
C2200	PRE-DRAWDOWN DAM MODIFICATIONS – GENERAL ARRANGEMENT – PLAN
C2201	DRAWDOWN – DAM MODIFICATIONS – PLAN AND SECTION
C2205	PRE-DRAWDOWN DAM MODIFICATIONS – GENERAL ARRANGEMENT – PROFILES AND SECTION
C2210	FINAL RIVER CHANNEL GRADING – PLAN, PROFILE AND TYPICAL SECTION
C2211	FINAL RIVER CHANNEL GRADING – CROSS SECTIONS
C2215	PRE-DRAWDOWN APPROACH CHANNEL EXCAVATION – PLAN AND SECTIONS

C3217	DIVERSION DAM DRAWDOWN REMOVAL – SECTIONS
C3220	DIVERSION DAM POST–DRAWDOWN REMOVAL – PLAN
C3221	DIVERSION DAM POST–DRAWDOWN REMOVAL – EXCAVATION PLAN
C3232	INTAKE CONCRETE POST–DRAWDOWN REMOVAL AND BACKFILL LIMITS – PLAN AND SECTIONS
C3234	DIVERSION DAM POST–DRAWDOWN REMOVAL – FINAL CHANNEL GRADING PLAN AND PROFILE
C3235	DIVERSION DAM POST–DRAWDOWN REMOVAL – FINAL CHANNEL GRADING SECTIONS
C3240	HISTORIC DIVERSION DAM POST–DRAWDOWN REMOVAL – PLAN AND REMOVAL NOTES
C3252	TUNNEL 1 INTAKE PORTAL CONCRETE PLUG – PLAN, SECTION, AND CONCRETE DETAILS
C3300	WOOD–STAVE PENSTOCK – PLAN AND SECTION
C3303	WOOD–STAVE PENSTOCK – FINAL GRADE PLAN
C3310	TUNNEL 1 OUTLET AND TUNNEL 2 INLET PORTALS – BARRIER SECTION AND DETAILS
C3330	PENSTOCK – PLAN
C3331	PENSTOCK – PROFILE AND SECTION
C3332	PENSTOCK AND POWERHOUSE REMOVAL – EXCAVATION PLAN AND SECTIONS
C3334	PENSTOCK – FINAL GRADING PLAN AND SECTION
C3340	SURGE VENT BARRIER – PLAN AND SECTIONS
C3350	TUNNEL 2 OUTLET PORTAL – BARRIER SECTION AND DETAILS
C3360	OVERFLOW SPILLWAY OUTLET PORTAL – BARRIER SECTION AND DETAILS
C3400	POWERHOUSE AND TAILRACE REMOVAL GENERAL ARRANGMENT – PLAN
C3401	POWERHOUSE REMOVAL – SECTIONS
C3420	TAILRACE DISPOSAL SITE – FINAL GRADING PLAN
C3520	TEMPORARY APRON ACCESS TRACK AND WORK PLATFORM – POST–DRAWDOWN PLAN
C3530	LEFT BANK ACCESS ROAD – PLAN
C3531	LEFT BANK ACCESS ROAD – PROFILE AND SECTIONS
C3532	LEFT BANK ACCESS ROAD – SECTIONS SHEET 1 OF 3
C3533	LEFT BANK ACCESS ROAD – SECTIONS SHEET 2 OF 3
C3534	LEFT BANK ACCESS ROAD – SECTIONS SHEET 3 OF 3
C3700	COPCO NO. 2 VILLAGE REMOVAL – PLAN
	CIVIL – IRON GATE FACILITY
C4000	PROJECT OVERVIEW AND LIMITS OF WORK – KEY MAP
C4001	PROJECT OVERVIEW AND LIMITS OF WORK – SHEET 1 OF 2
C4002	PROJECT OVERVIEW AND LIMITS OF WORK – SHEET 2 OF 2
C4050	HYDRAULIC INFORMATION – FIGURES AND TABLE
C4051	DRAWDOWN WATER SURFACE FLOOD LEVELS – RESERVOIR PLAN
C4052	DRAWDOWN WATER SURFACE FLOOD LEVELS – DAM SECTION
C4100	PRE–DRAWDOWN CONSTRUCTION – GENERAL ARRANGEMENT – PLAN & SEQUENCE
C4105	PRE–DRAWDOWN CONSTRUCTION TUNNEL MODIFICATIONS – PLAN AND PROFILE
C4110	PRE DRAWDOWN CONSTRUCTION – BULKHEAD GATE AND BLIND FLANGE – REMOVAL NOTES
C4111	PRE DRAWDOWN CONSTRUCTION – OUTLET STRUCTURE – PLAN, SECTIONS AND REMOVAL NOTES
C4112	PRE DRAWDOWN CONSTRUCTION – TUNNEL OUTLET AND TAILRACE MODIFICATIONS
C4115	PRE DRAWDOWN CONSTRUCTION – NEW GATE ASSEMBLY – GENERAL ARRANGEMENT
C4116	PRE DRAWDOWN CONSTRUCTION – NEW GATE FRAME

C4515	WORK PLATFORMS AND ACCESS – RIGHT BANK TUNNEL ACCESS PLAN, SECTIONS AND DETAIL
	CIVIL – ROADS, BRIDGES, AND CULVERTS – DRAWDOWN IMPROVEMENTS
C5000	CIVIL – ROADS & BRIDGES – GENERAL NOTES
C5001	TYPICAL DETAILS SHEET (ROAD/BRIDGE DETAILS)
C5002	CIVIL – ROADS & BRIDGES – TYPICAL DETAILS (CAMP AND SCOTCH CREEK)
C5003	TYPICAL DETAILS SHEET (CHANNEL DETAILS)
C5200	CAMP CREEK BRIDGE – GENERAL ARRANGEMENT
C5201	CAMP CREEK BRIDGE – PLAN, PROFILE, AND SECTION
C5202	CAMP CREEK BRIDGE – CHANNEL ALIGNMENT – PLAN AND PROFILE
C5300	SCOTCH CREEK BRIDGE – GENERAL ARRANGEMENT
C5301	SCOTCH CREEK BRIDGE – PLAN, PROFILE, AND SECTION
C5302	SCOTCH CREEK BRIDGE – CHANNEL ALIGNMENT – PLAN AND PROFILE
	CIVIL – ROAD IMPROVEMENTS
C6000	CIVIL – ROADS & BRIDGES – GENERAL NOTES
C6001	CIVIL – ROADS & BRIDGES – TYPICAL DETAILS
C6002	TYPICAL DETAILS (LAKEVIEW AND DAGGETT)
C6100	FALL CREEK BRIDGE – GENERAL ARRANGEMENT
C6101	FALL CREEK BRIDGE – PLAN, PROFILE, AND SECTION
C6200	DAGGETT ROAD BRIDGE – GENERAL ARRANGEMENT
C6201	DAGGETT ROAD BRIDGE – PLAN, PROFILE, AND SECTION
C6300	LAKEVIEW BRIDGE – GENERAL ARRANGEMENT
C6301	LAKEVIEW BRIDGE – PLAN, PROFILE, AND SECTION
C6400	DRY CREEK BRIDGE – GENERAL ARRANGEMENT
C6401	DRY CREEK BRIDGE – PLAN, PROFILE, AND SECTION
C6700	TRANSPORT – CONSTRUCTION ACCESS – COPCO ROAD KEY PLAN
C6701	TRANSPORT – CONSTRUCTION ACCESS – COPCO ROAD AND CULVERT IMPROVEMENT PLAN (SHEET 1 OF 5)
C6702	TRANSPORT – CONSTRUCTION ACCESS – COPCO ROAD AND CULVERT IMPROVEMENT PLAN (SHEET 2 OF 5)
C6703	TRANSPORT – CONSTRUCTION ACCESS – COPCO ROAD AND CULVERT IMPROVEMENT PLAN (SHEET 3 OF 5)
C6704	TRANSPORT – CONSTRUCTION ACCESS – COPCO ROAD AND CULVERT IMPROVEMENT PLAN (SHEET 4 OF 5)
C6710	COPCO AND JC BOYLE ROAD AND CULVERT IMPROVEMENT PLAN (SHEET 5 OF 5)
C6720	TRANSPORT – CONSTRUCTION ACCESS – TYPICAL SECTIONS (SHEET 1 OF 2)
C6721	TRANSPORT – CONSTRUCTION ACCESS – TYPICAL SECTIONS (SHEET 2 OF 2)
	CIVIL – RECREATIONAL FACILITIES
C7000	J.C. BOYLE RESERVOIR – RECREATION SITE DEMOLITION – KEY MAP
C7005	PIONEER PARK EAST RECREATION FACILITY – DEMOLITION PLAN
C7010	PIONEER PARK WEST RECREATION FACILITY –

PRELIMINARY DESIGN (NOT FOR CONSTRUCTION)

E1032	ELECTRICAL DEMOLITION – PLAN & ELEVATION OF SUBSTATION 1 OF 7
E1033	ELECTRICAL DEMOLITION – PLAN & ELEVATION OF SUBSTATION 2 OF 7
E1034	ELECTRICAL DEMOLITION – PLAN & ELEVATION OF SUBSTATION 3 OF 7
E1035	ELECTRICAL DEMOLITION – PLAN & ELEVATION OF SUBSTATION 4 OF 7
E1036	ELECTRICAL DEMOLITION – PLAN & ELEVATION OF SUBSTATION 5 OF 7
E1037	ELECTRICAL DEMOLITION – PLAN & ELEVATION OF SUBSTATION 6 OF 7
E1038	ELECTRICAL DEMOLITION – PLAN & ELEVATION OF SUBSTATION 7 OF 7
E1051	ELECTRICAL DEMOLITION – ONE LINE DIAGRAM 1 OF 3
E1052	ELECTRICAL DEMOLITION – ONE LINE DIAGRAM 2 OF 3
E1053	ELECTRICAL DEMOLITION – ONE LINE DIAGRAM 3 OF 3
E1060	ELECTRICAL DEMOLITION – OIL CONTAINMENT PLAN
E1072	ELECTRICAL DEMOLITION – DISTRIBUTION
	ELECTRICAL – COPCO NO. 1 FACILITY
E2022	ELECTRICAL DEMOLITION – LINE 3 FALL CREEK 69KV
E2023	ELECTRICAL DEMOLITION – LINE 15
E2033	ELECTRICAL DEMOLITION – PLAN & ELEVATION OF SUBSTATION 1 OF 4
E2034	ELECTRICAL DEMOLITION – PLAN & ELEVATION OF SUBSTATION 2 OF 4
E2035	ELECTRICAL DEMOLITION – PLAN & ELEVATION OF SUBSTATION 3 OF 4
E2036	ELECTRICAL DEMOLITION – PLAN & ELEVATION OF SUBSTATION 4 OF 4
E2051	ELECTRICAL DEMOLITION – ONE LINE DIAGRAM
	ELECTRICAL – COPCO NO. 2 FACILITY
E3022	ELECTRICAL DEMOLITION – IRON GATE – COPCO 2 69KV 1 OF 2
E3023	ELECTRICAL DEMOLITION – IRON GATE – COPCO 2 69KV 2 OF 2
E3032	ELECTRICAL DEMOLITION – PLAN & ELEVATION OF SUBSTATION 1 OF 4
E3033	ELECTRICAL DEMOLITION – PLAN & ELEVATION OF SUBSTATION 2 OF 4
E3034	ELECTRICAL DEMOLITION – PLAN & ELEVATION OF SUBSTATION 3 OF 4
E3035	ELECTRICAL DEMOLITION – PLAN & ELEVATION OF SUBSTATION 4 OF 4
E3051	ELECTRICAL DEMOLITION – ONE LINE DIAGRAM
	ELECTRICAL – IRON GATE FACILITY
E4032	ELECTRICAL DEMOLITION – PLAN & ELEVATION OF SUBSTATION 1 OF 3
E4033	ELECTRICAL DEMOLITION – PLAN & ELEVATION OF SUBSTATION 2 OF 3
E4034	ELECTRICAL DEMOLITION – PLAN & ELEVATION OF SUBSTATION 3 OF 3
E4051	ELECTRICAL DEMOLITION – ONE LINE DIAGRAM
E4061	ELECTRICAL DEMOLITION – PRODUCTION POLE P514
	SECURITY
S1000	J.C. BOYLE FACILITY – SECURITY – GENERAL LAYOUT
S2000	COPCO NO. 1 FACILITY – SECURITY – GENERAL LAYOUT
S3000	COPCO NO. 2 FACILITY – SECURITY – GENERAL LAYOUT
S4000	IRON GATE FACILITY – SECURITY – GENERAL LAYOUT

D	ISSUED WITH 60% DESIGN REPORT	CBN	NB	SRM	02/07/20	<div> <div>WARNING</div> <div>0 1/2 1</div> <div>IF THIS BAR DOES NOT MEASURE 1" THEN DRAWING IS NOT TO SCALE</div> </div>	<div> <div>PREPARED BY</div> <div>  Knight Piesold CONSULTING </div> <div>  Kiewit </div> </div>	<div> <div>DESIGNED</div> <div>C. NIAMIR</div> <div>DRAWN</div> <div>W. LAHODA</div> <div>REVIEWED</div> <div>N. BISHOP</div> <div>IN CHARGE</div> <div>S. YONG</div> <div>APPROVED</div> <div>S. MOTTRAM</div> </div>	<div> <div>PREPARED FOR</div> <div>  KLAMATH RIVER RENEWAL CORPORATION </div> </div>	PROJECT	KLAMATH RIVER RENEWAL PROJECT		PROJ #	VA103-640/1
C	ISSUED WITH DRAFT 60% DESIGN REPORT	CBN	NB	SRM	12/17/19					DATE	02/07/2020			
B	UPDATED FOR 30% DESIGN REPORT	CBN	NB	SRM	10/17/19					SHEET TITLE	INDEX OF DRAWINGS SHEET 2 OF 2	DWG	G0003	
A	ISSUED WITH DRAFT 30% DESIGN REPORT	CBN	NB	SRM	08/27/19									
REV	DESCRIPTION	BY	CHK	APP	DATE									