

Klamath River Renewal Project

A cooperative effort to revitalize the Klamath River

August 2019

Klamath River Renewal Project Jobs in the Basin

Who is KRRC?

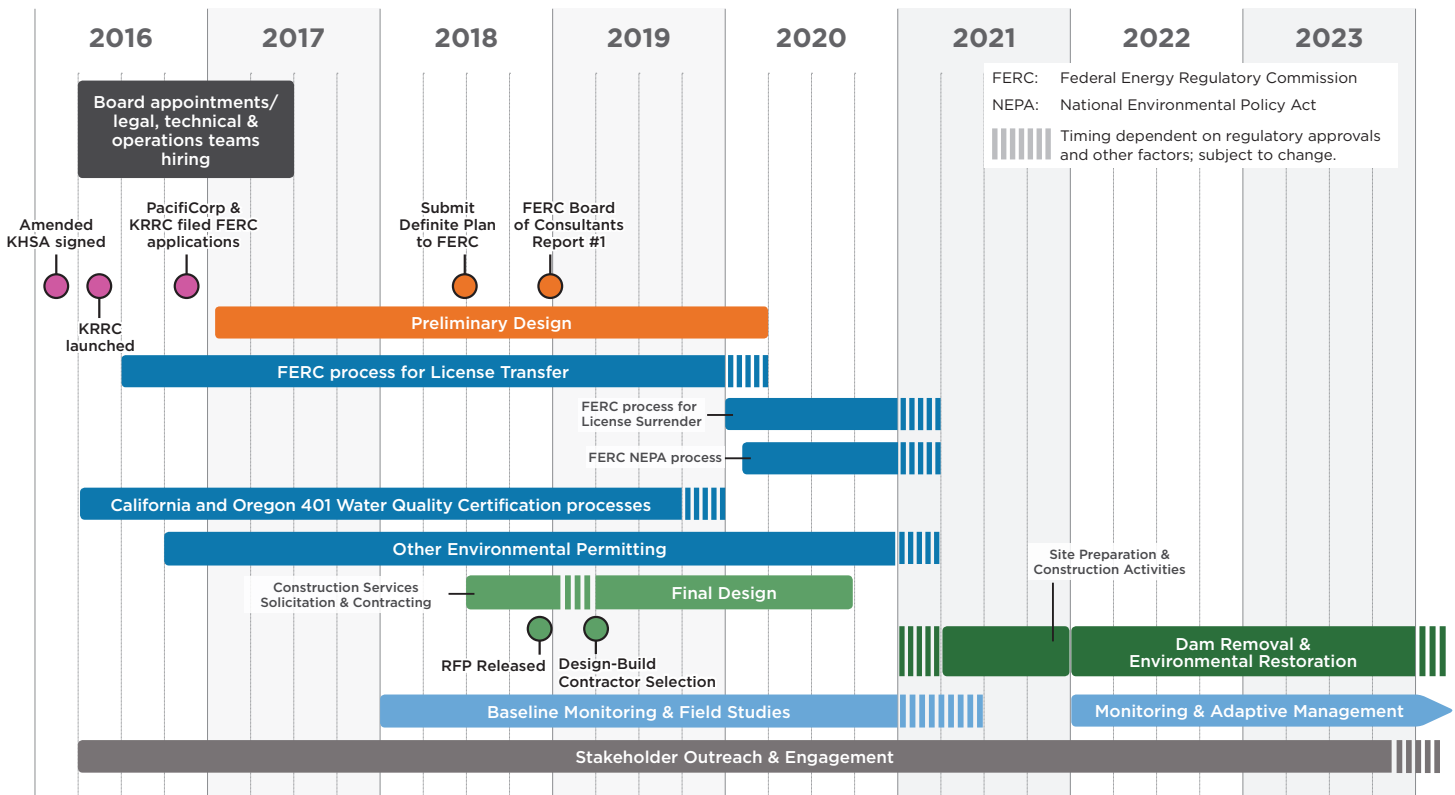
The Klamath River Renewal Corporation (KRRC) is an independent nonprofit organization formed in 2016 as part of the amended Klamath Hydroelectric Settlement Agreement (KHSAs). Signatories of the amended KHSAs, including the States of California and Oregon, local governments, Tribal nations, dam owner PacifiCorp, irrigators, and several conservation and fishing groups, appointed KRRC to take ownership and oversee removal of four hydroelectric dams on the river and restoration of formerly inundated lands. KRRC's work is funded by PacifiCorp customer surcharges and California Proposition 1 water bond funds.

KRRC is encouraging local hiring and will award contracts to local businesses for project components where there is local capability and capacity. KRRC is seeking proposals for specific services from local companies, Tribes, and other service providers. More information is available at: www.klamathrenewal.org/jobs.

KRRC Project Components

1. City of Yreka water supply intake and pipeline replacement
2. Temporary construction access improvements
3. Permanent road and bridge improvements
4. Downstream flood control improvements
5. Dam modification/drain reservoirs
6. Dam and hydropower facility removal
7. Reservoir restoration
8. Recreation demolition and restoration

Anticipated Timeline



Jobs and Project Phases

The Project will be implemented over three phases and will require a wide array of services and actions including technical aspects, such as science and engineering, and non-technical aspects, ranging from pre-Project terrestrial and aquatic monitoring to onsite construction, construction support, equipment and materials supply, and related services.

In total, KRRC expects the project will employ approximately 400 full time or part time positions through contracts, subcontracts and direct hiring. Indirectly, the project is estimated to stimulate more than a thousand jobs in support industries such as food service and hospitality.

Business and Employment Opportunities

Planning

- Monitoring and field work associated with aquatic and terrestrial resources
- Seed collection and plant propagation
- Geotechnical drilling, surveying, & material testing
- Piezometer or groundwater well installation
- Photography and documentation of existing conditions
- Non-native plant control
- Early planting and irrigation
- Local outreach office staffing (administrative, data processing, etc.)
- Road improvement design
- Water supply mitigation design
- Recreation demolition and restoration design
- Road improvement and access road construction, including dust control
- Fire break construction
- Site security

Construction

- Surveying
- Quality control (inspection and material testing)
- Heavy equipment operation (dozers, scrapers, backhoes, excavators, etc.)
- Manual construction labor (e.g. pipe installation, site cleanup, etc.)
- Planting and irrigation installation
- Non-native plant control
- Drilling
- Explosive handling
- Truck driving
- Road grading and maintenance
- Fire control
- Material processing and stockpiling
- Site security
- Construction workforce support (meal catering, transportation, portable restroom facilities, etc.)

Monitoring & Remediation

- Monitoring and field work associated with aquatic and terrestrial wildlife resources, as well as vegetation
- Water quality or other permit-related monitoring
- Plant maintenance, propagation and replacement
- Photography and documentation of post-construction conditions
- Local office staffing
- Limited road maintenance

Indirect Job Creation

Lodging – Single family home and apartment rentals, hotel rentals, and campgrounds. Increased demand for supporting services, such as housekeeping, janitorial, and trash collection services.

Food – Restaurants and grocery stores, resulting in increased sales and expanded opportunities for service industry employment.

Entertainment – Recreational opportunities during construction (e.g. fishing, camping, hiking, skiing). Supporting supply services will increase as will urban entertainment such as theaters, shopping, gaming, and bar and lounge establishments.

Supplies – Increased sales of fuel, household supplies, and other sundries for local and non-local workers.

Contact Information

Klamath River Renewal Corporation
2001 Addison Street, Suite 317
Berkeley, CA 94704
Phone: 415-820-4441
Email: info@klamathrenewal.org

www.klamathrenewal.org