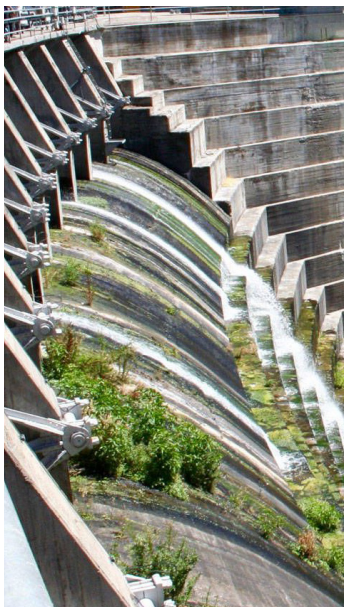




Spring-Fall 2019

The Klamath River Renewal Corporation's (KRRC) job is to take ownership of four PacifiCorp dams — JC Boyle, Copco, No. 1 & 2, and Iron Gate — and then remove these dams, restore formerly inundated lands, and implement required mitigation measures in compliance with all applicable federal, state, and local regulations. KRRC is planning to conduct surveys, assessments, and monitoring in and around the dams and reservoirs, and downstream areas. These information-gathering activities will support permitting and design work for the project.



Who:

KRRC, PacifiCorp, AECOM, CDM Smith, River Design Group, and other small subcontractors

What:

Field activities may include the following types of data-gathering:

- Topographic data collection via aircraft and on the ground at the dams, reservoirs, hydropower buildings, disposal sites, and hatcheries
- Boat-mounted sonar bathymetric data collection at the reservoirs
- Visual assessment of dams and appurtenant works, including underwater divers' assessments
- Geotechnical investigations of the earthen dams (J. C. Boyle and Iron Gate) and portions of the reservoir rims (Copco No. 1 and Iron Gate), including drilling and back-hoe excavation
- Visual assessments for asbestos, lead, and hazardous materials at each dam and hydropower facility
- Biological surveys for wildlife and botanical resources in the project area (dams, reservoirs, adjacent river channel reaches, access roads, and recreation areas)



- Wetland delineations of all potential construction, staging, and disposal areas, including field identification and mapping of wetland/upland boundaries
- Cultural resource surveys of archaeological sites and historic structures of dams, reservoirs, adjacent river channel reaches, access roads, recreation, and new flood-affected areas
- Groundwater monitoring at existing groundwater monitoring wells adjacent to Copco No. 1 and Iron Gate reservoirs, where access has been approved



Where:

The Klamath River channel, reservoirs, and adjacent areas from the upstream end of J.C. Boyle Reservoir to a point approximately 18 river miles downstream of Iron Gate Dam (to Humbug Creek), on publicly-owned or PacifiCorp property. Private property will only be accessed with explicit landowner permission.

When:

The field activities are scheduled to begin March 2019 and conclude December 2019. Most activities will occur between 7 a.m. and 7 p.m. Some activities require nighttime observation, such as nocturnal wildlife surveys, and may occur at any hour.

Learn more about the Klamath River Renewal Project at www.klamathrenewal.org.

For questions: info@klamathrenewal.org or 415-820-4441