



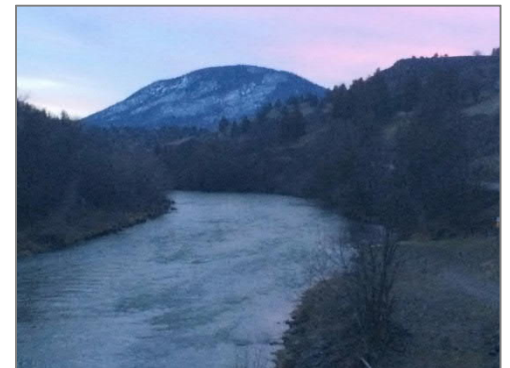
Lower Klamath Project

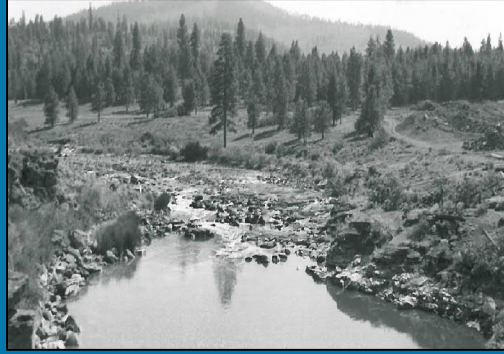
Recreation Plan Update Webinar

May 29, 2019

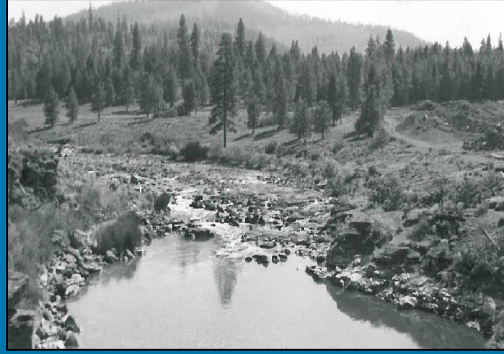
Today's Agenda

1. Introductions
2. Project Update
3. Status Update on Recreation Plan
4. Conceptual Designs
5. Next Steps
6. Q&A – Clarifying Questions





1 – Introductions



2 – Project Update

Project Update

1. Field Survey Update

- a) Ongoing biological and cultural surveys this summer
- b) Next round of geotechnical investigation & underground utility surveys

2. Regulatory

- a) Draft CEQA process complete; Final EIR in development by SWRCB
- b) Cost and risk submittal to FERC in July 2019
- c) USACE 404 permit application submitted
- d) Draft Biological Assessment coordination with USFWS and NMFS ongoing
- e) Klamath County MOU executed

Project Update

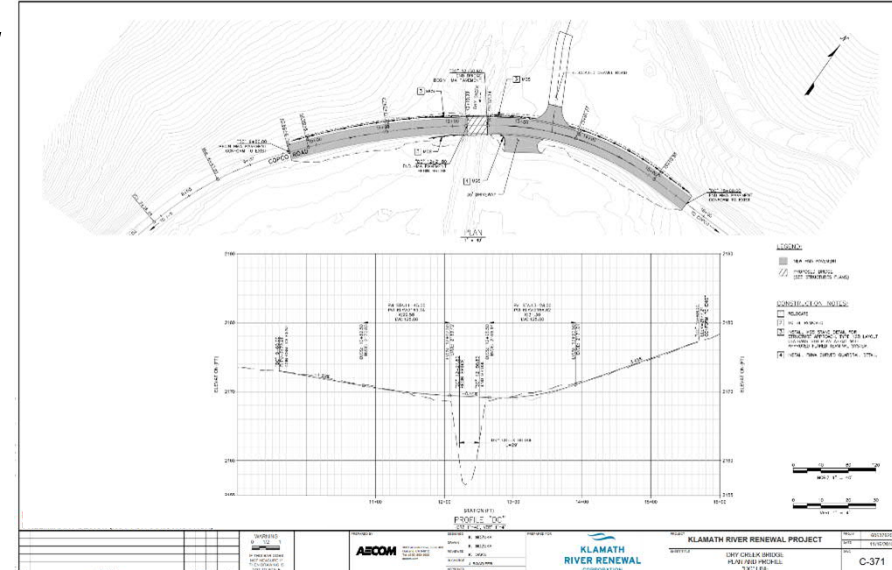
3. Procurement Update

- a) Progressive Design-Builder (Kiewit) executed
- b) Kiewit team has begun field work and final design development



4. Detailed Design

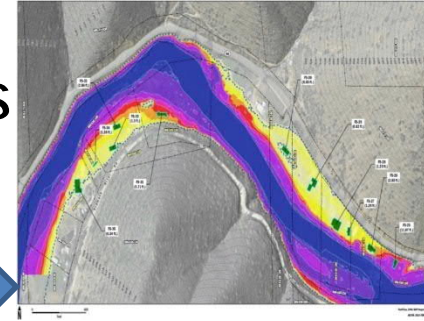
- a) Detailed design underway for nearly all project elements underway
- b) Working toward 60% design by December 2019



Project Update

Primary Work Components

- 1. City of Yreka Intake & Pipeline Replacement
- 2. Temporary Construction Access Improvements
- 3. Permanent Road & Bridge Improvements
- 4. Downstream Flood Control Improvements

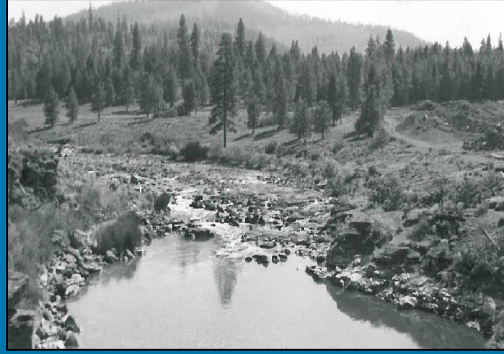


- 5. Hatchery Modifications
- 6. Dam Tunnel & Gate Improvements
- 7. Reservoir Drawdown



- 8. Dam & Hydropower Facility Removal
- 9. Reservoir Habitat Restoration
- 10. Recreation Plan and Restoration

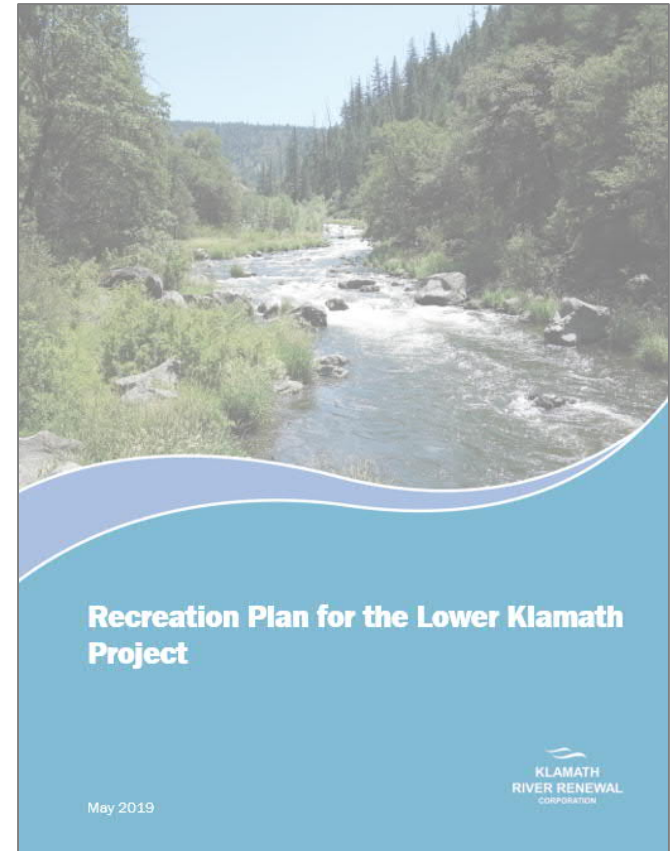




3 – Status on Recreation Plan

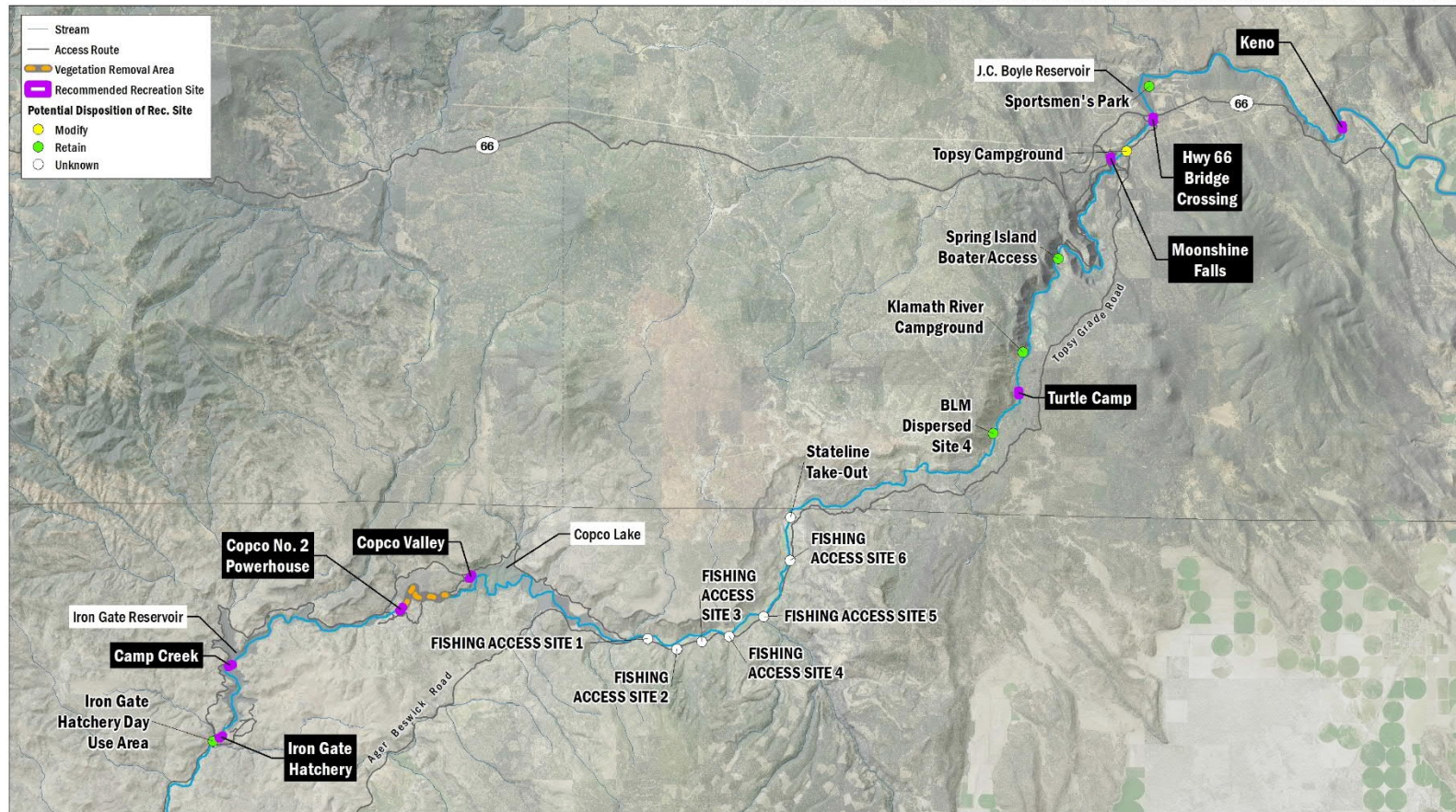
Status on Recreation Plan

- Recreation Plan under development
 - Now includes additional details at proposed sites, including scenic quality information, and conceptual designs
- Working towards Recreation Plan by December 2019, subject to FERC's schedule for processing the Surrender Application



Status on Recreation Plan

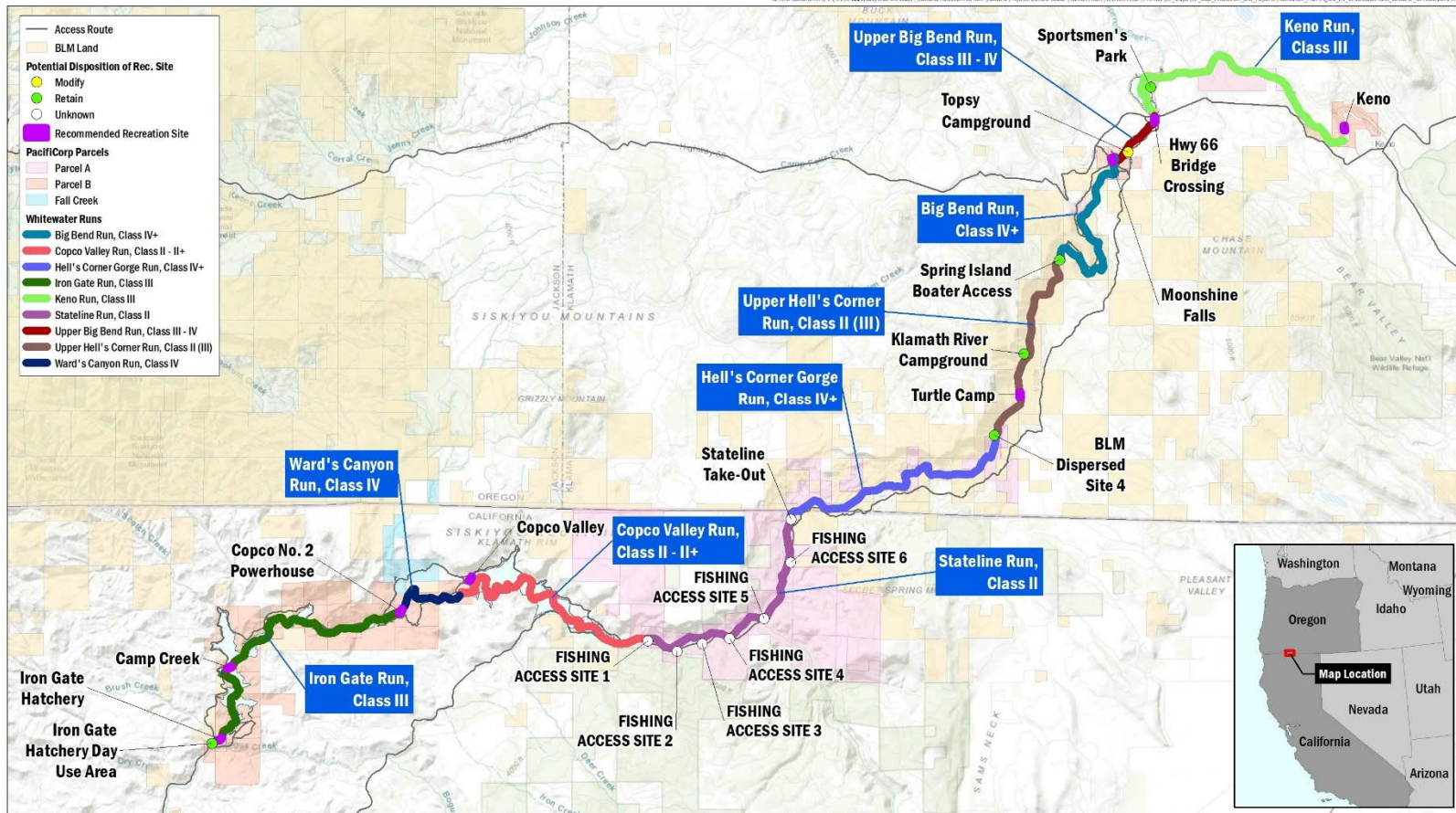
Recommended Recreation Opportunities



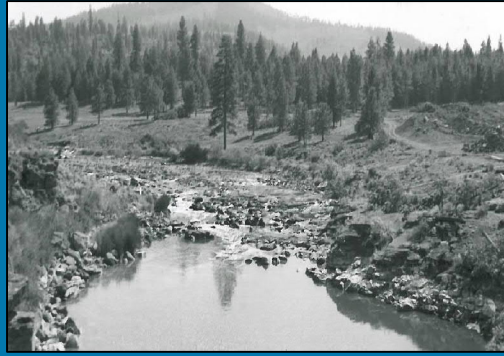
- 8 river access sites
- Refined through coordination with the whitewater users and Cultural Resources Working Group
- May change based on ultimate disposition and ownership of Parcel B lands
- May also change based on feedback from stakeholders

Status on Recreation Plan

Anticipated Whitewater Boating Runs



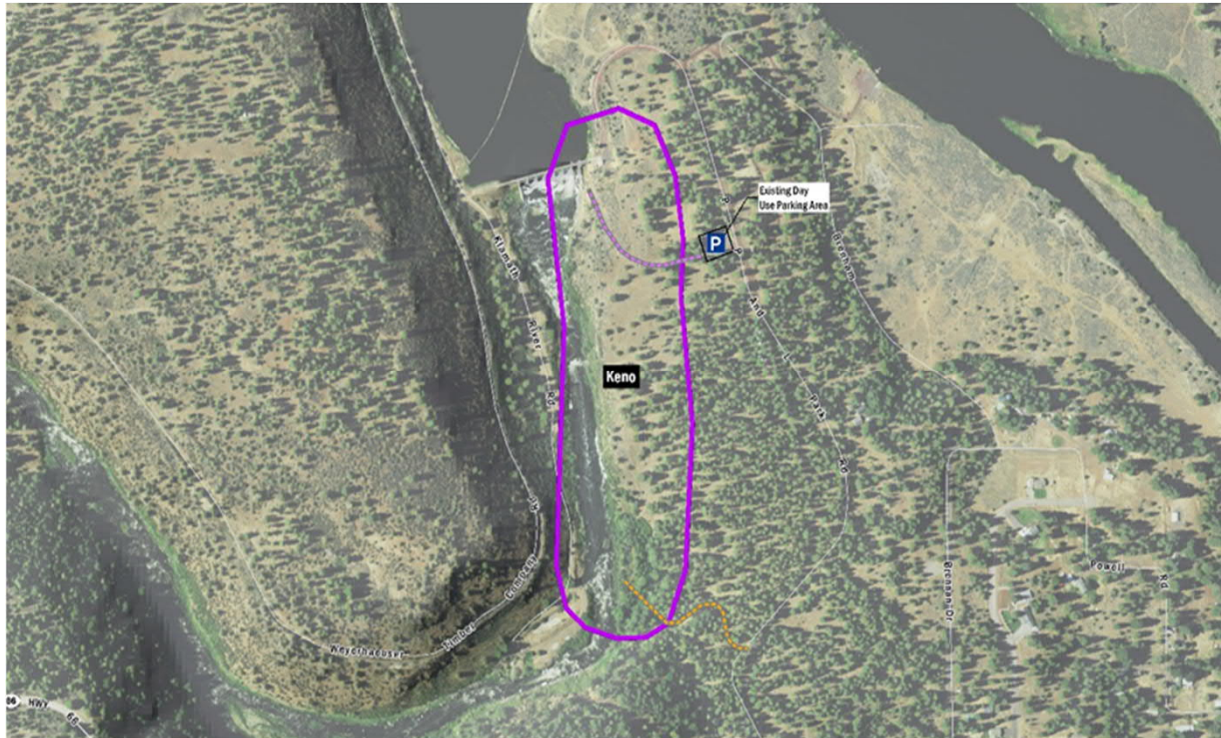
- Site under consideration, plus the retained existing sites provide whitewater boating access for each run



4 – Conceptual Designs

Conceptual Designs

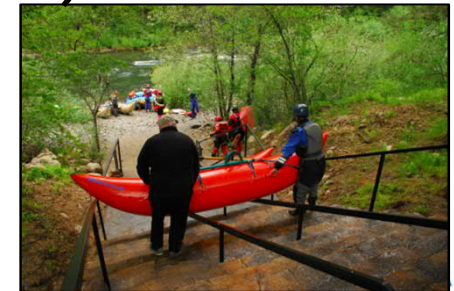
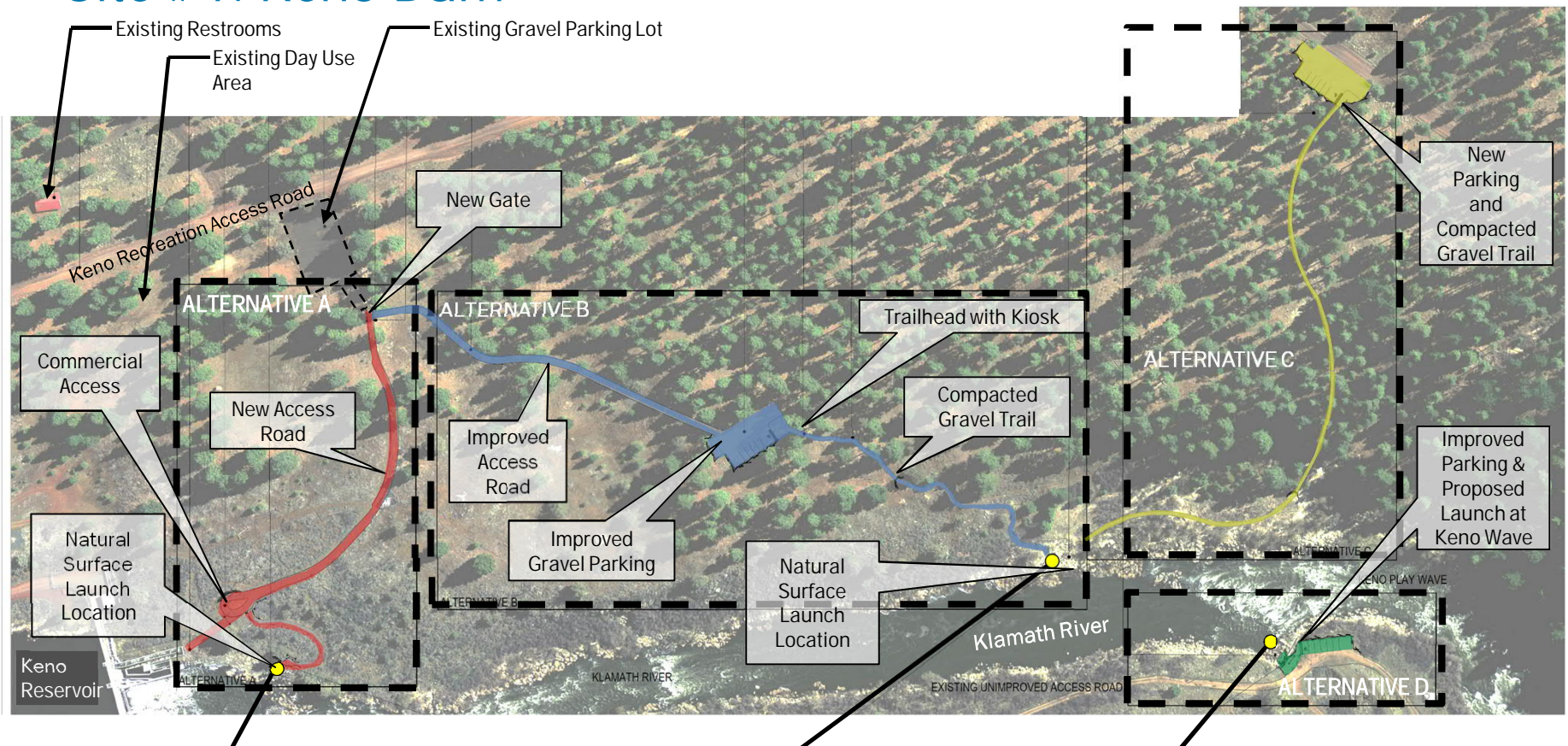
Site #1: Keno Dam



- Access from Highway 66
- Suitable for boating, fishing, and informal shoreline recreation
- Coordination with landowner USBR required to develop site
- Four alternatives considered (Alternative A preferred)

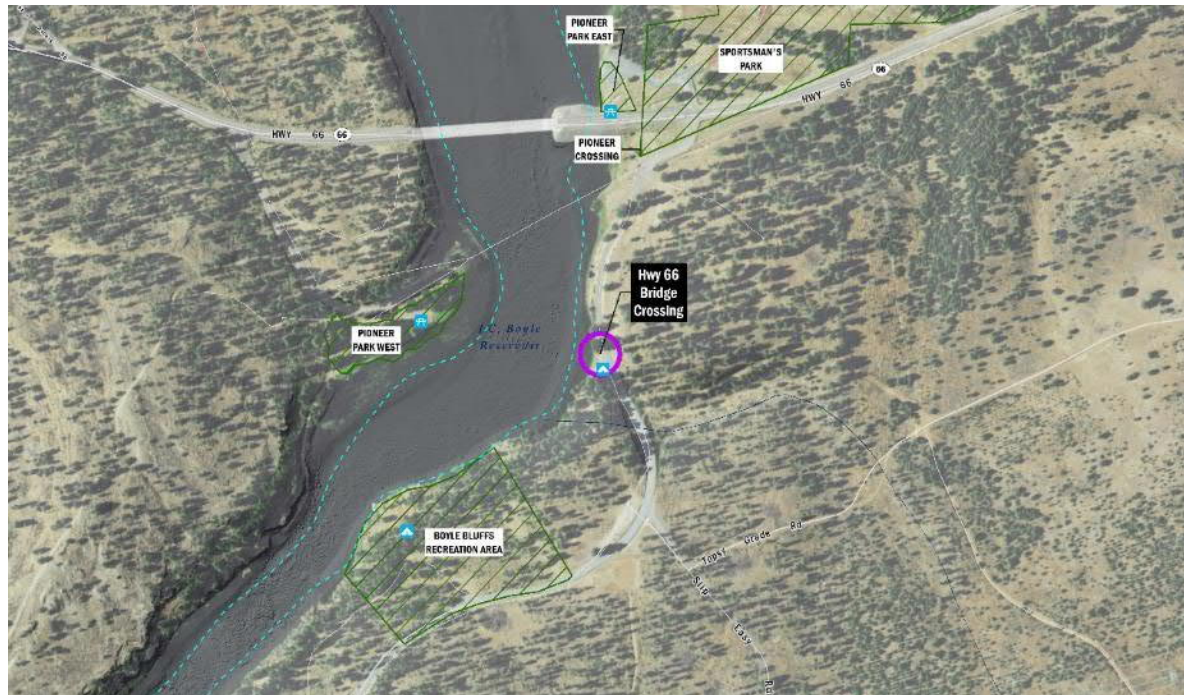
Conceptual Designs

Site #1: Keno Dam



Conceptual Designs

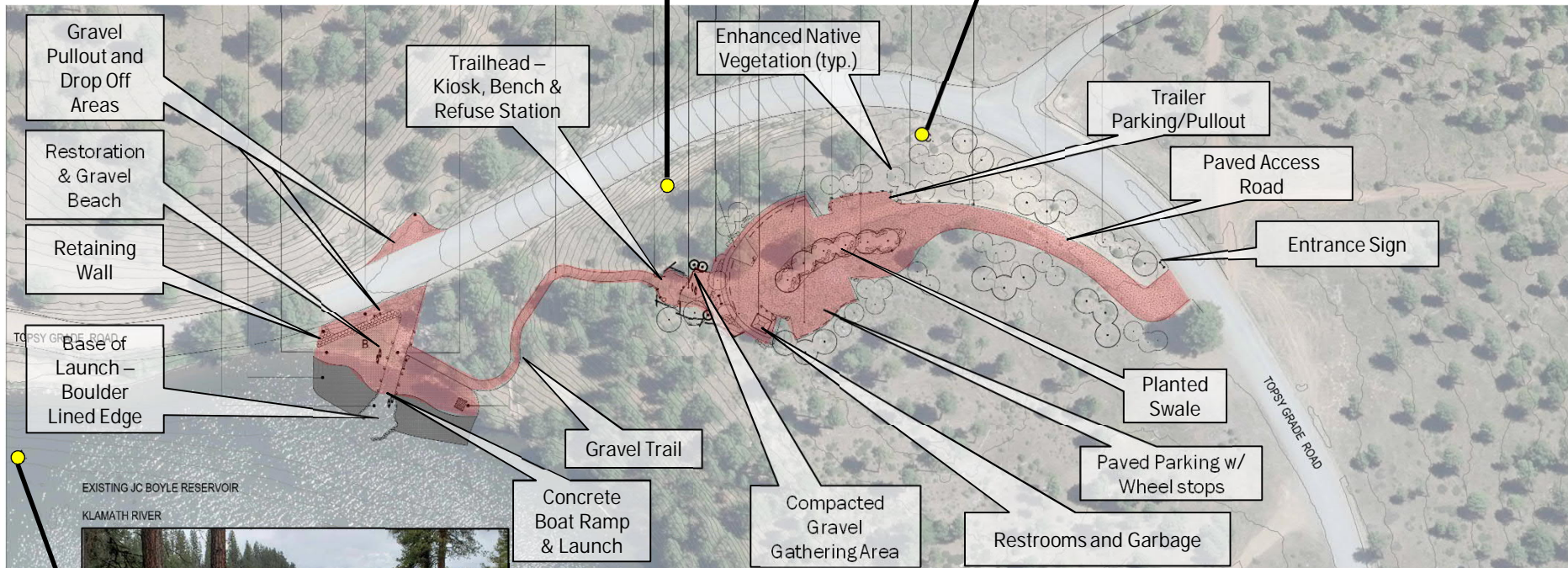
Site #2: Highway 66 Bridge Crossing



- Access from Highway 66
- Suitable for boating, fishing, and informal shoreline recreation
- Requires earthwork
- New ADA restroom

Conceptual Designs

Site #2: Highway 66 Bridge Crossing



May 29, 2019

DRAFT – FOR DISCUSSION PURPOSES ONLY

Conceptual Designs

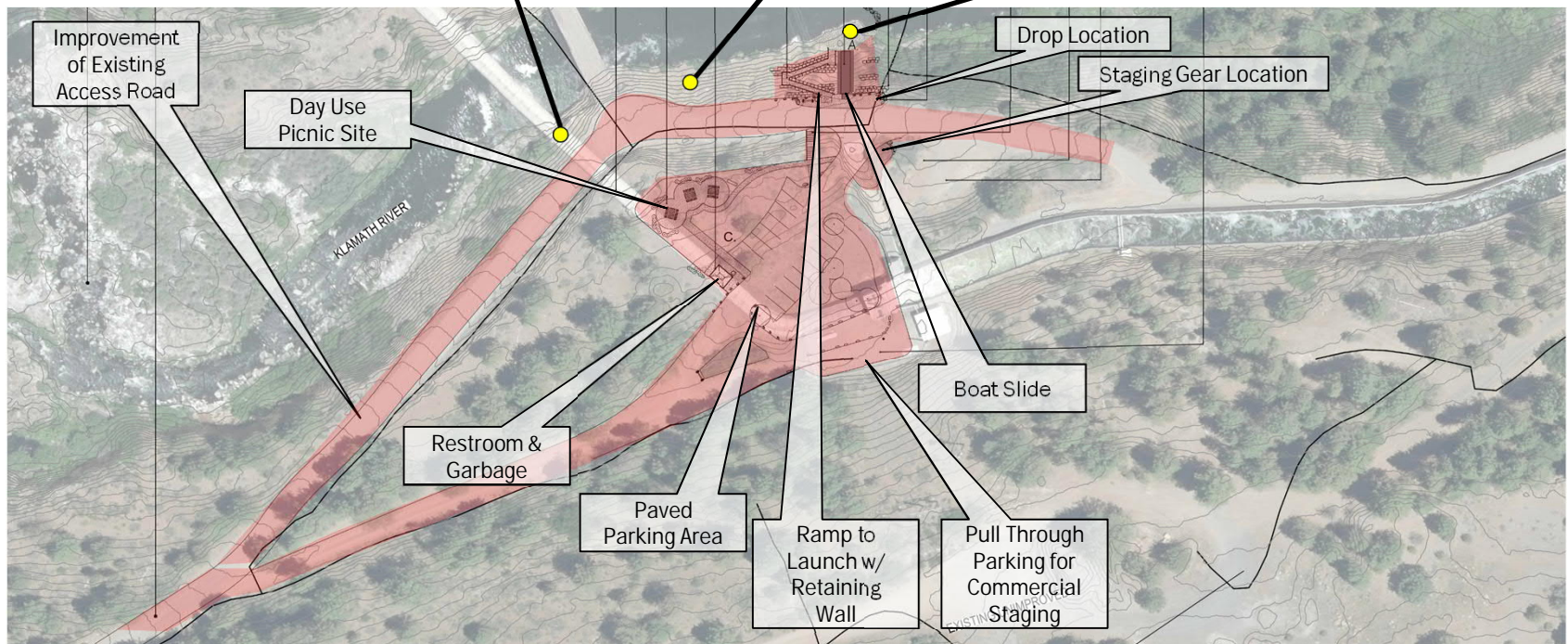
Site #3: Moonshine Falls



- Access from Highway 66 and dirt access road
- Suitable for boating and fishing
- Requires earthwork
- New ADA restroom

Conceptual Designs

Site #3: Moonshine Falls



Conceptual Designs

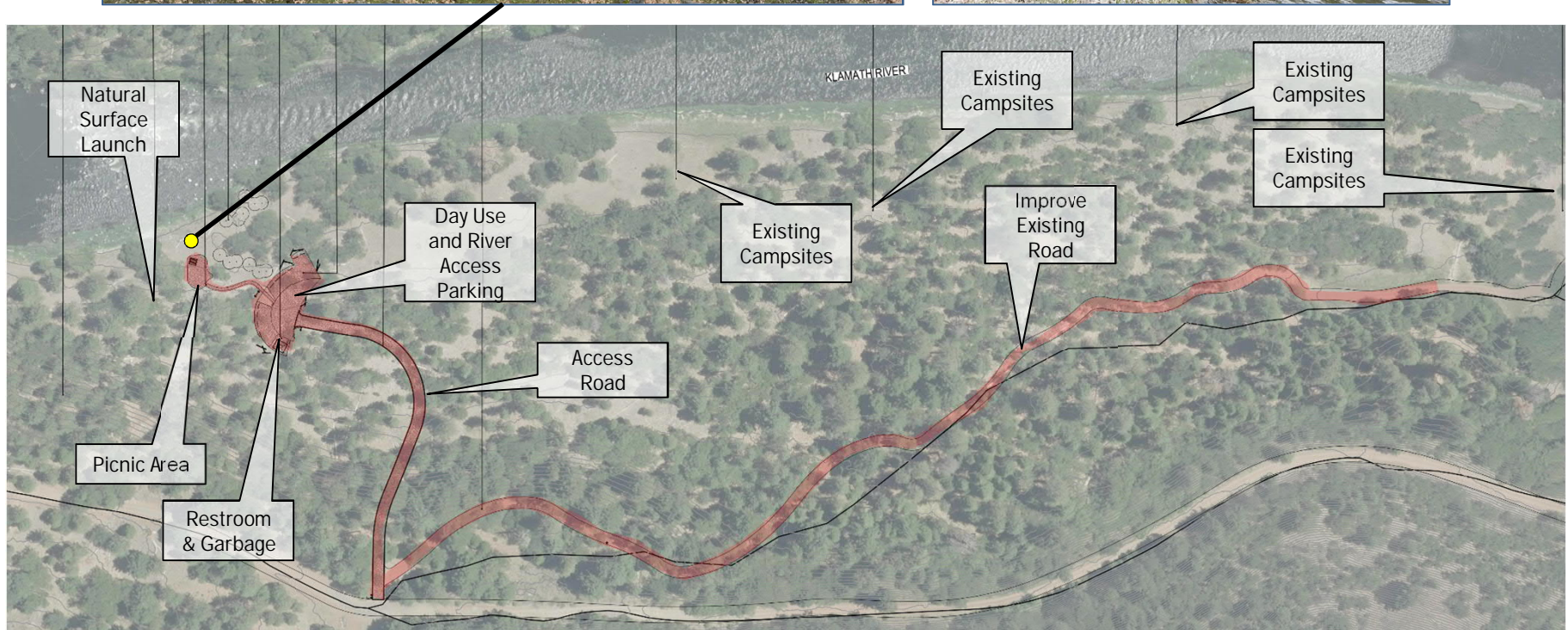
Site #4: Turtle Camp



- Access from Highway 66 and J.C. Boyle Powerhouse Road
- Located at existing recreation facility
- Suitable for boating, fishing, and informal shoreline recreation
- May require earthwork
- New ADA restroom

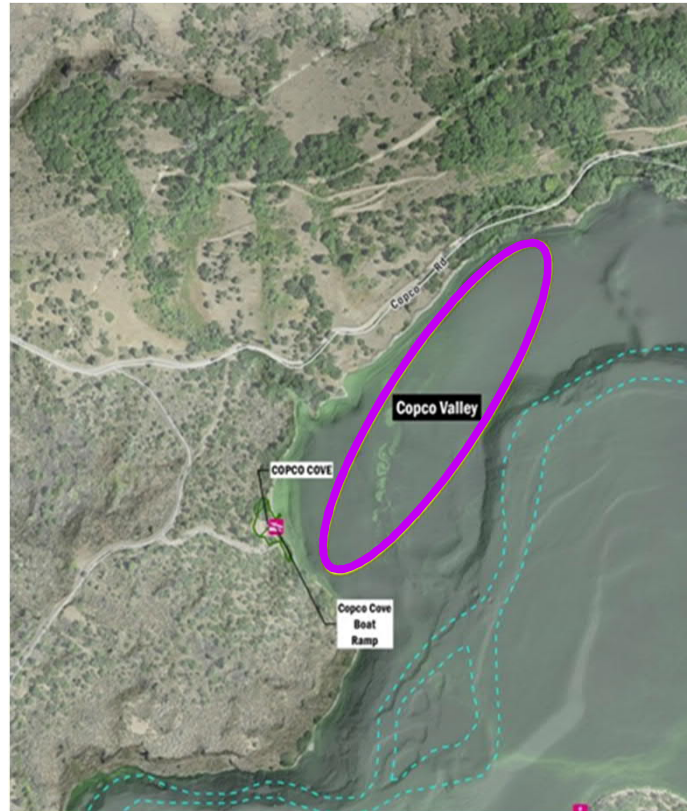
Conceptual Designs

Site #4: Turtle Camp



Conceptual Designs

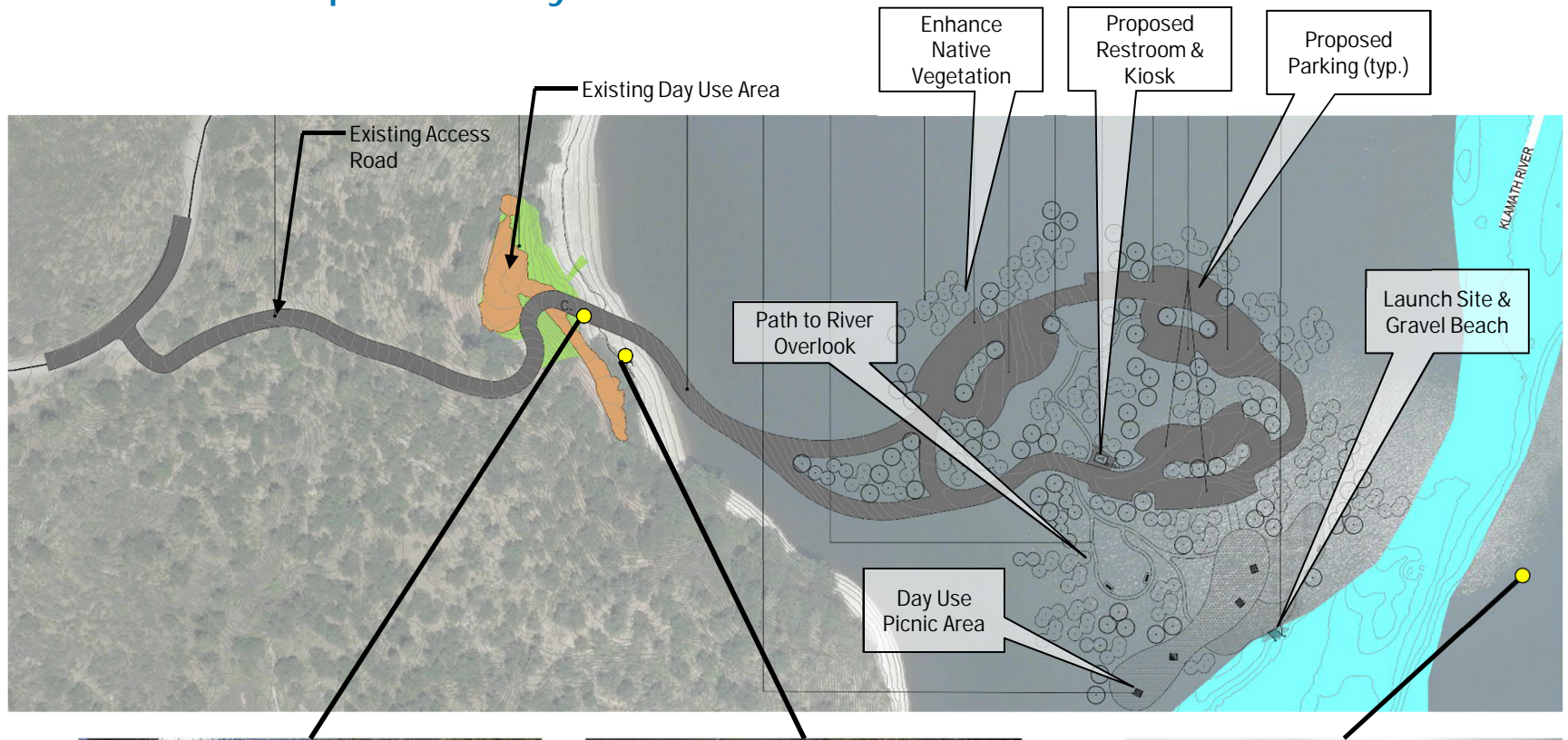
Site #5: Copco Valley



- Access from Copco Road
- Suitable for boating, fishing, and informal shoreline recreation
- Would require extension of Copco Cove access road

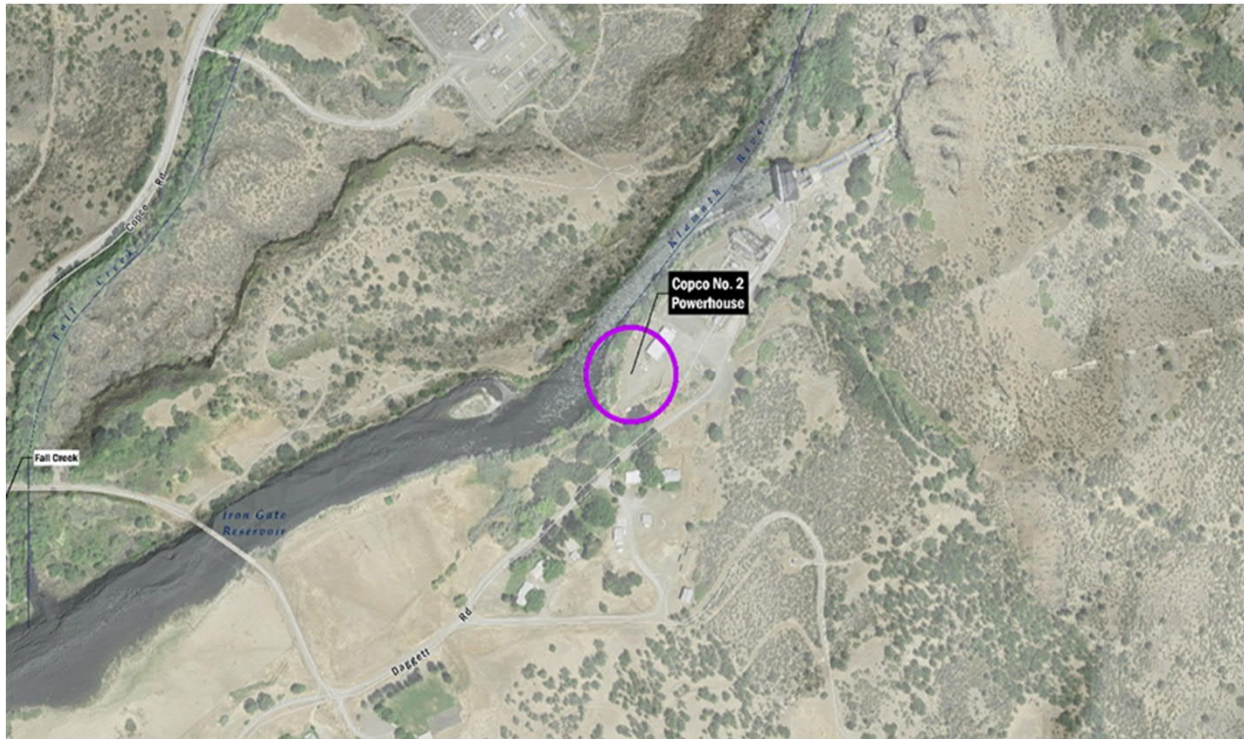
Conceptual Designs

Site #5: Copco Valley



Conceptual Designs

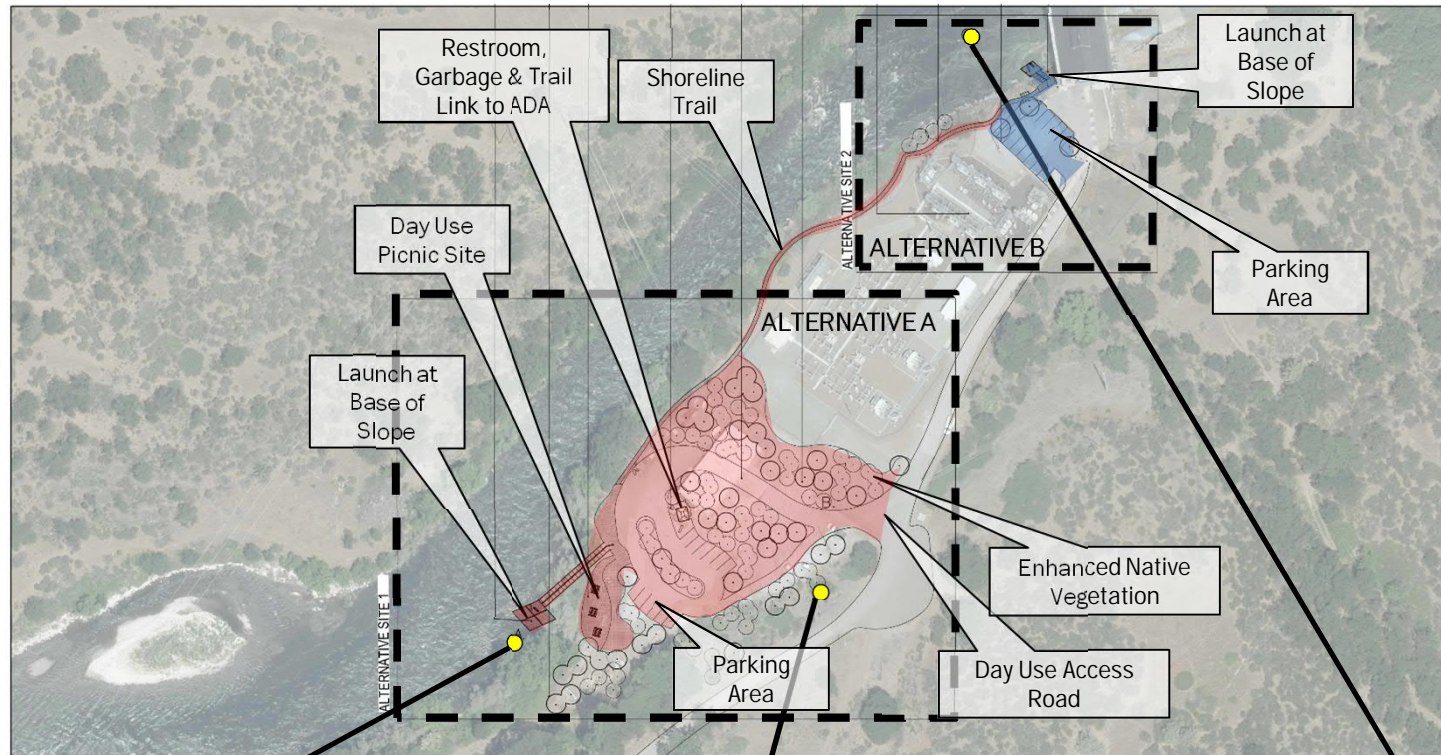
Site #6: Copco No. 2 Powerhouse



- Access from Daggett Road via Copco Road
- Upstream of existing day use site
 - Existing Fall Creek Day Use Area will be decommissioned
- Suitable for boating, fishing, day use, and informal shoreline recreation
- Requires earthwork and grading for access and parking
- Two alternatives being considered

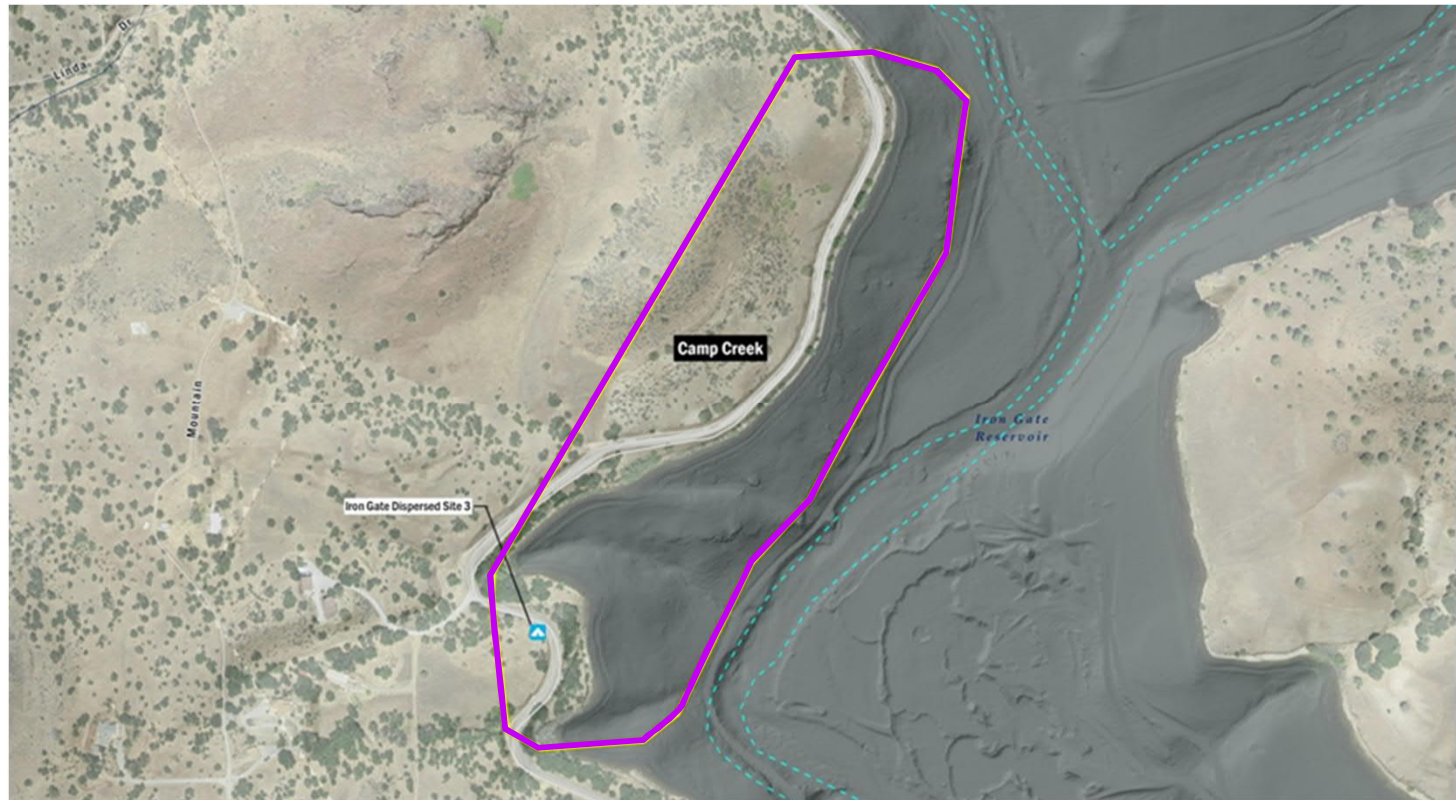
Conceptual Designs

Site #6: Copco No. 2 Powerhouse



Conceptual Designs

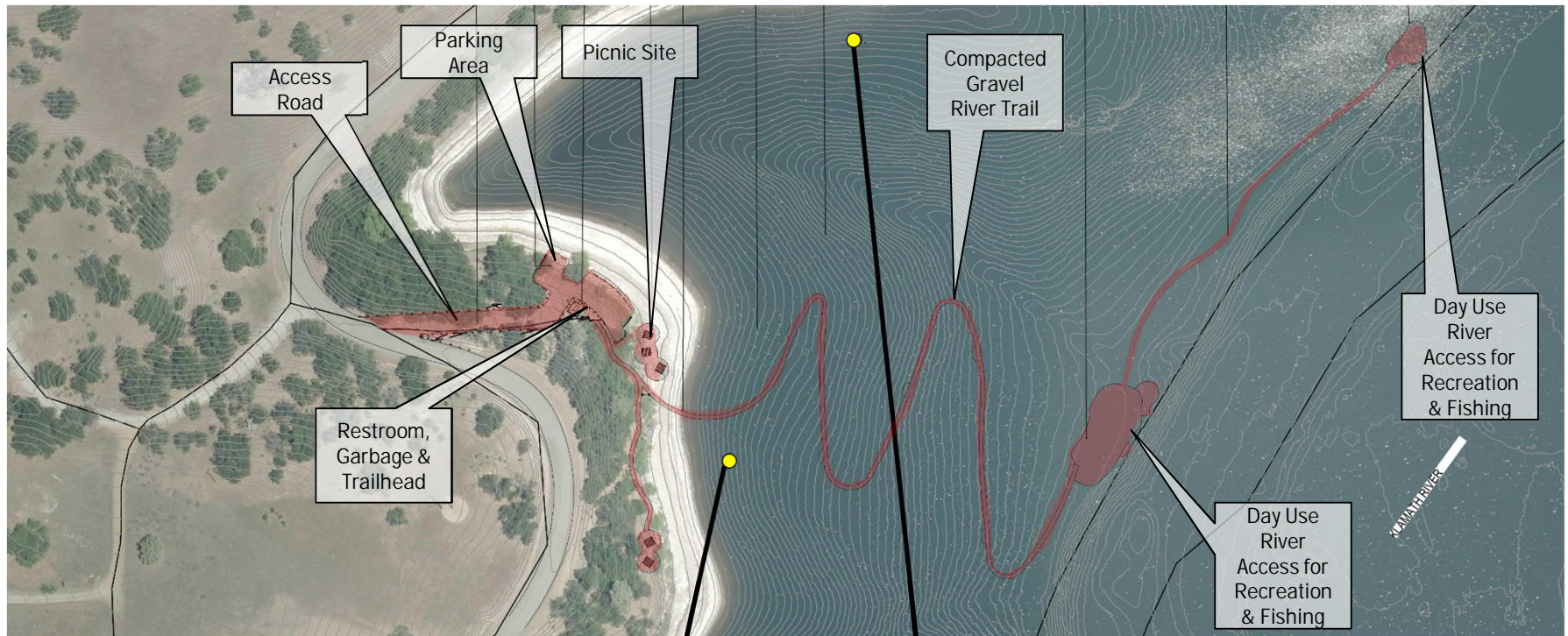
Site #7: Camp Creek



- Access from Copco Road
- Suitable for boating, fishing, and informal shoreline recreation
- Requires trail to river's edge

Conceptual Designs

Site #7: Camp Creek



Conceptual Designs

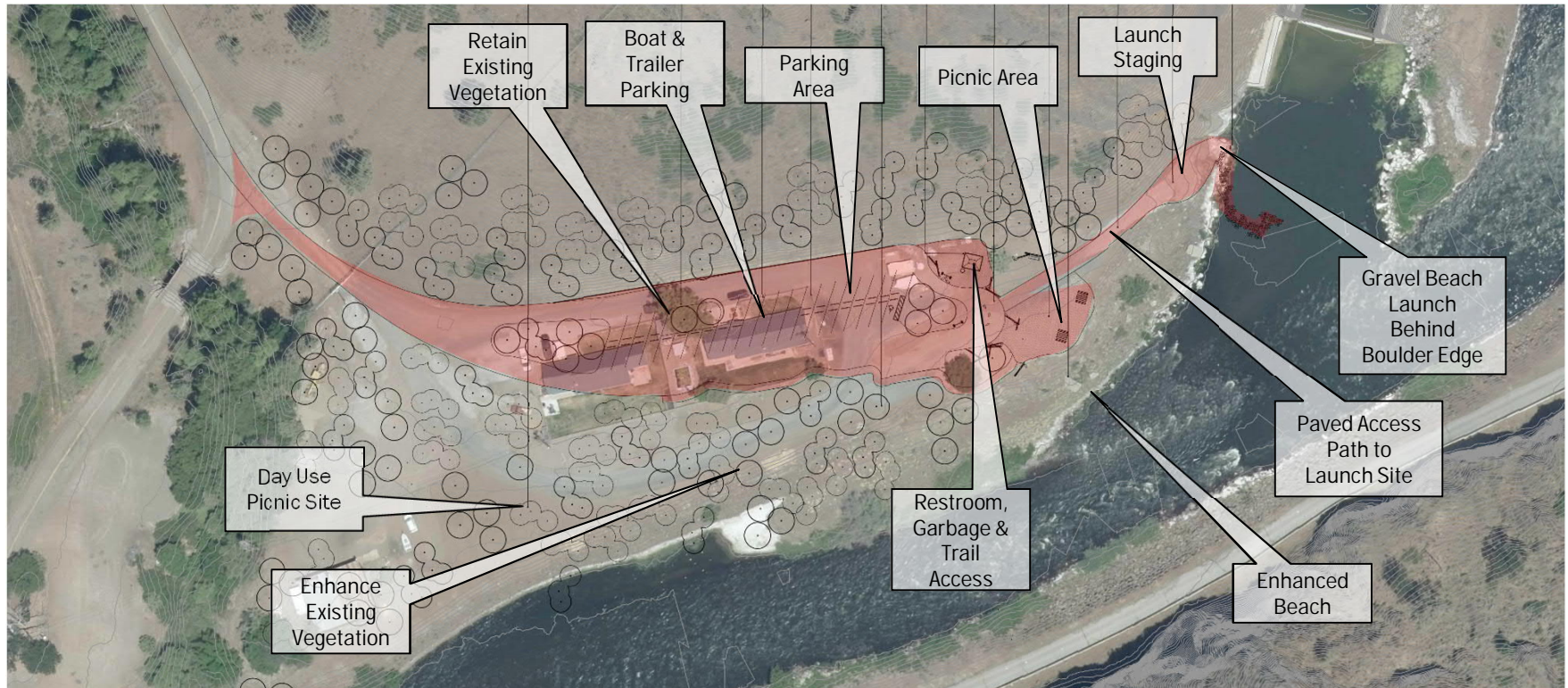
Site #8: Iron Gate Hatchery

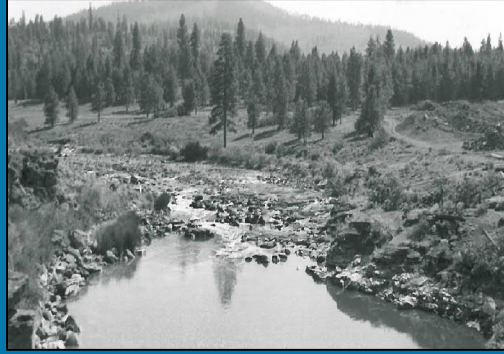


- Access from Copco Road
- Near existing recreation facility in good condition
- Suitable for boating, fishing, and informal shoreline recreation
- Little earthwork required

Conceptual Designs

Site #8: Iron Gate Hatchery

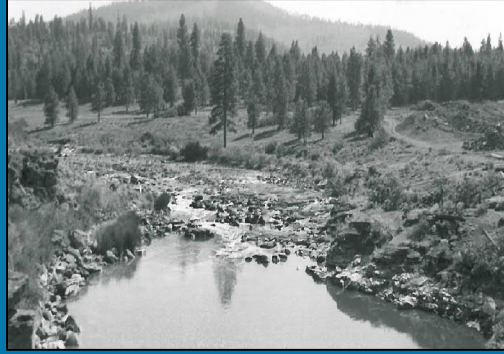




5 – Next Steps

Next Steps

| Task | Schedule |
|---|--------------------------|
| KRRC recreation stakeholder outreach | Ongoing |
| KRRC stakeholder follow-up / phone calls | Ongoing |
| Stakeholders submit written feedback to KRRC for consideration in final draft recreation plan | June 28, 2019 |
| KRRC to submit Recreation Plan to FERC | Anticipated Dec. 2019 |



6 – Questions & Answers

Thank You!

Send comments to:

Betsey Hodges

KRRC Outreach & Communications

betsey@klamathrenewal.org

Chris Park

KRRC Technical Representative Team

parkce@cdmsmith.com

916-576-7497