



Lower Klamath Project

Recreation Plan Update Webinar

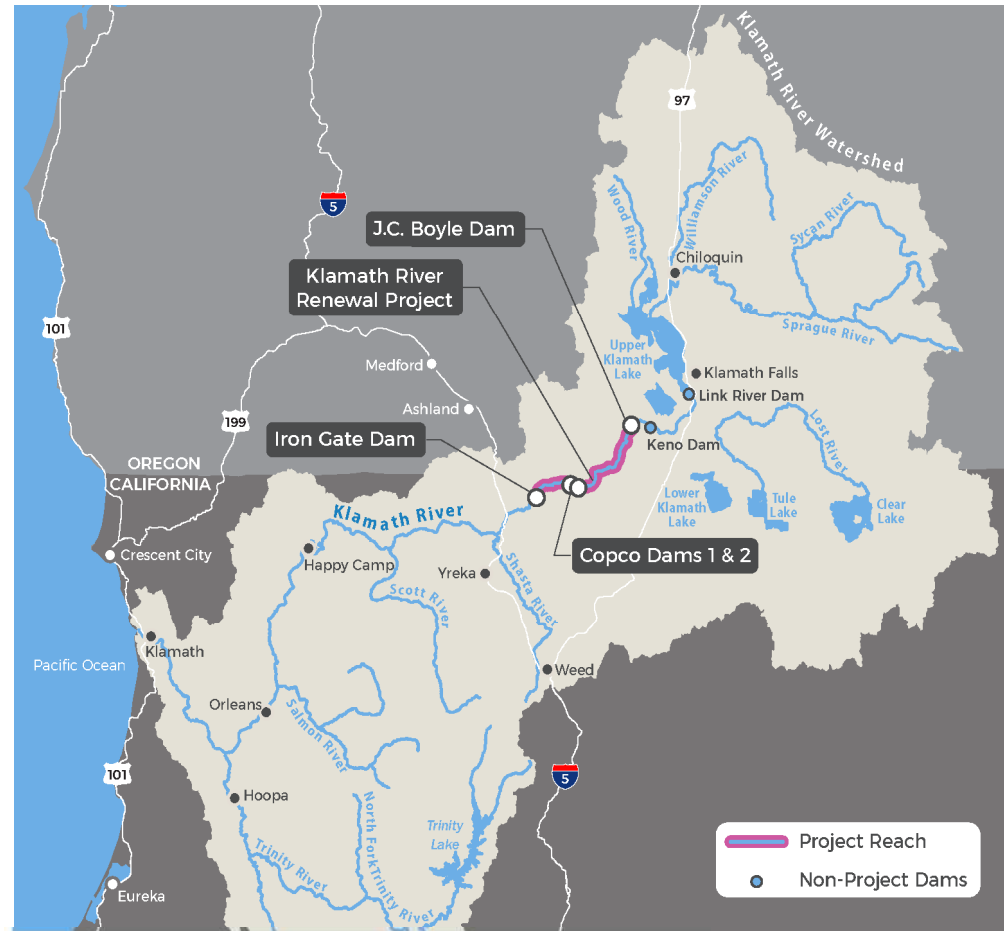


Today's Agenda

- Introductions
- Presentation
 - Background
 - Update on Recreation Plan
 - Screening Results
 - Recreation Plan Table of Contents
 - Next Steps
- Q&A – Clarifying Questions
- Next Steps

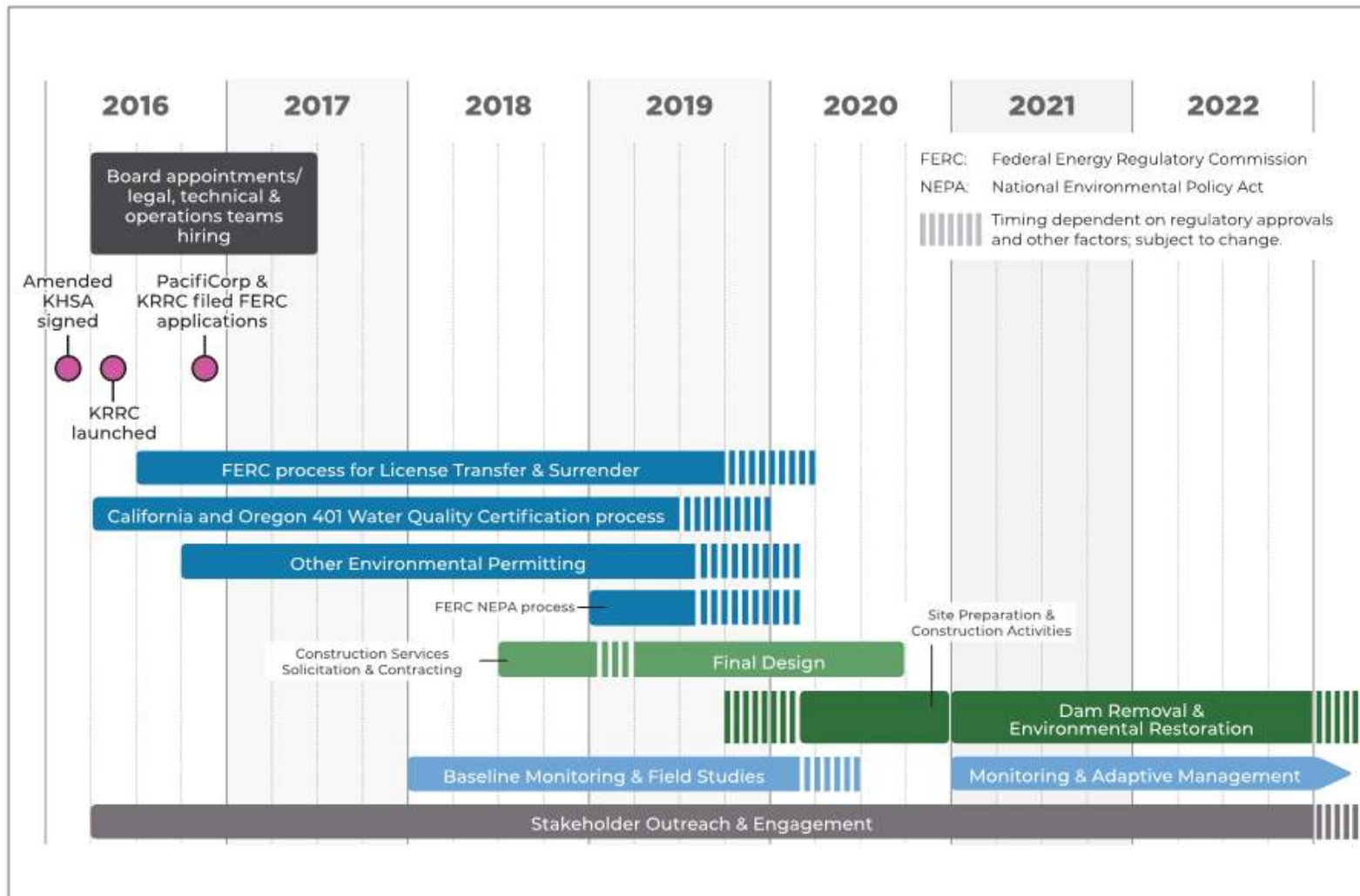
Klamath River Renewal Corporation

- 501(c)(3) non-profit organization
- Launched in 2016
- Governed by 14-person board appointed by KHSA signatories
- Single mission: Restore fish passage and improve water quality, primarily by decommissioning four hydroelectric dams



Klamath River Basin

Anticipated Timeline



Primary Work Components/Categories



Recreation Plan Process

- KRRC is developing a Recreation Plan through a stakeholder outreach process
- The Recreation Plan will identify new and enhanced recreation facilities to mitigate the project's impact to:
 - Year-round Hell's Corner rafting corridor
 - The permanent loss of reservoir recreation facilities
- KRRC will restore lost reservoir recreation areas to native habitats and integrate Recreation Setting Characteristics into the planning process



KRRC Outreach

- KRRC has undertaken stakeholder outreach to gather perspectives on:
 - What recreation facilities KRRC should consider for its recreation mitigation
 - Where recreation facilities should be located
 - What selection criteria should be used
 - How scenery management principles can be integrated into facility planning and conceptual design
- KRRC has documented all suggestions in the Draft Recreation Plan submitted to the Federal Energy Regulatory Commission (FERC) as a component of the “Definite Plan” (June 2018)
- FERC will determine KRRC’s requirements for recreation mitigation
- KRRC is continuing stakeholder outreach for further input on refined recreation opportunities

Initial Stakeholder Feedback

Major recreation option categories identified through stakeholder outreach:

Boating
Access

Fishing
Access

Trails/Road
Access

Economic
Stimulus

Campgrounds

Full List of Suggested Recreation Opportunities

- New River Access Locations
- Access During Construction
- New ADA Facility
- Copco 2 Bypass Reach
- Topsy Campground
- Topsy Campground
- Fall Creek Day Use Area
- Jenny Creek Campground
- Iron Gate Hatchery Day Use Area
- New Campgrounds
- New Routes/Roads
- Non-motorized Trail
- Spring Island Boater Access
- Campground South of JC Boyle Powerhouse
- Frain Ranch Campground
- PacifiCorp Fishing Access Sites 1 through 6
- Stateline Boater Takeout
- Fishing Access Upstream of J.C. Boyle Powerhouse
- Day Use and River Access at J.C. Boyle
- Road Improvement
- Frain Ranch Bridge
- RV Park in Seiad Valley or Happy Camp
- Walking Trails / Wildlife Viewing / Interpretive Trails
- Flatwater Recreation in Siskiyou County
- Fishing Access Upstream or Downstream of J.C. Boyle Powerhouse
- Whitewater Park
- Recreational Gold Mining
- Fishing Lodges
- River-side Commercial Recreation Development
- Siskiyou Tourism Plan
- Upgrade Private Campgrounds
- Transportation Plan
- Expand R-Ranch
- Enhance Private Docks
- BLM Klamath River Campground and [Turtle] Camp
- Klamath Hot Springs

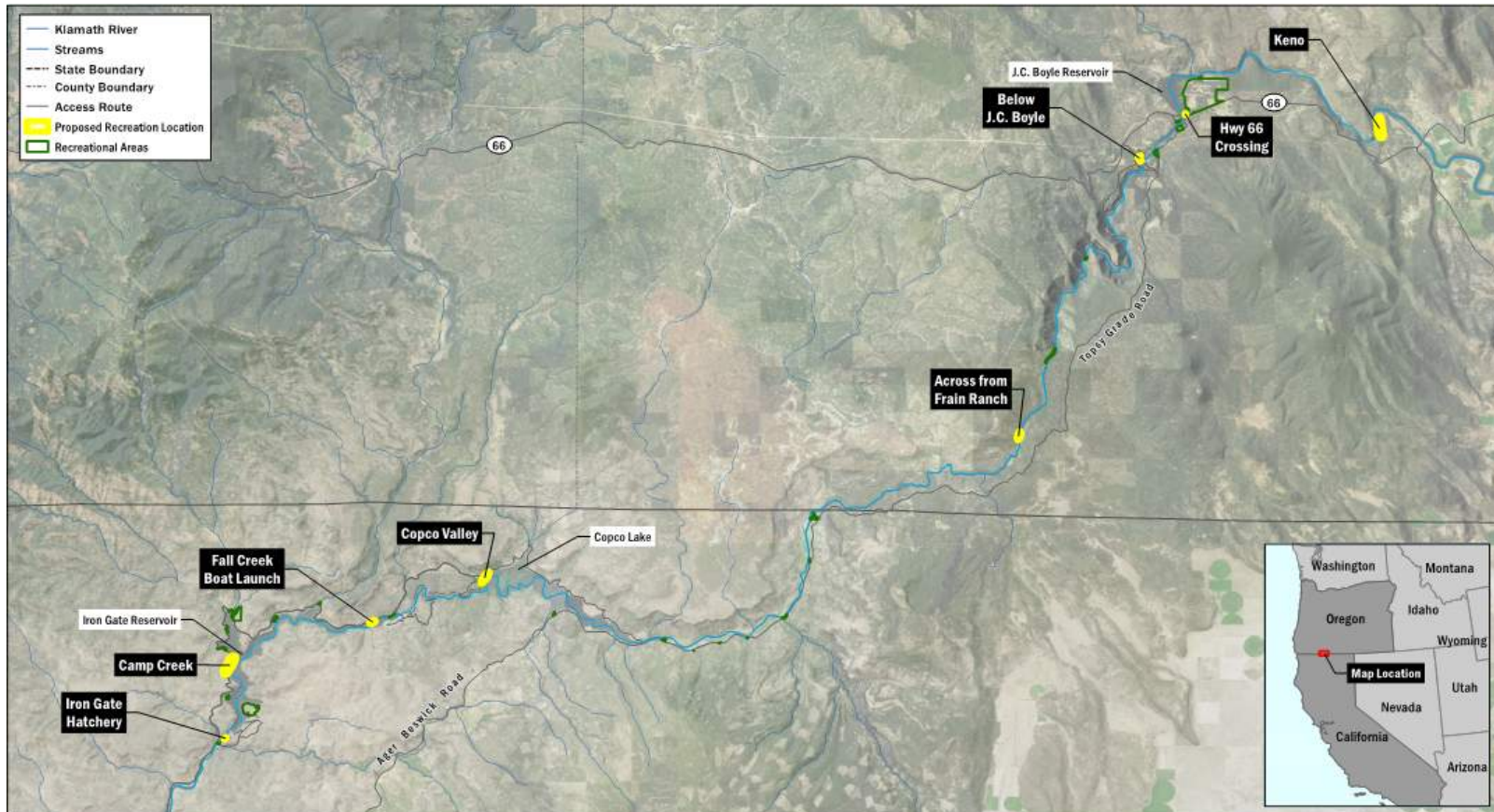
Screening Stakeholder Suggestions

- Opportunities identified in the Draft Recreation Plan were evaluated against screening criteria
- Screening criteria developed with stakeholder input
- Screening Criteria include:
 - Address or offset impacts
 - Avoid impacts to other resource areas
 - Reflect natural setting and history of area
 - Long-term sustainability
 - Economic stimulus
 - Implementable through available funding

Screening Results

- After screening initial feedback, KRRC is proposing implementation of:
 - New River Access Locations
 - Access During Construction
 - New ADA Facilities, where feasible
- Restoration of Copco 2 Bypass Reach is now included in the KRRC project description
- Approximately 30 other stakeholder suggestions will be included in the Recreation Plan
 - Other entities may implement one or more of these projects in the future as a separate action

Recommended Recreation Opportunities



- 8 river access sites
- Refined through coordination with the CRWG and whitewater users
- May change based on ultimate disposition and ownership of Parcel B lands

Proposed Site #1: Near Keno Dam



- Suitable for rafting, boating, fishing, and passive recreation
- Requires earthwork and grading for access, road, and parking
- New ADA restroom
- Access from Highway 66

Proposed Site #2:

Highway 66 Bridge Crossing, Pioneer Park



- Suitable for rafting, boating, fishing, and passive recreation
- Existing shoreline access
- Requires very little earthwork
- New ADA restroom
- Access from Highway 66

Proposed Site #3: Below J.C. Boyle Dam



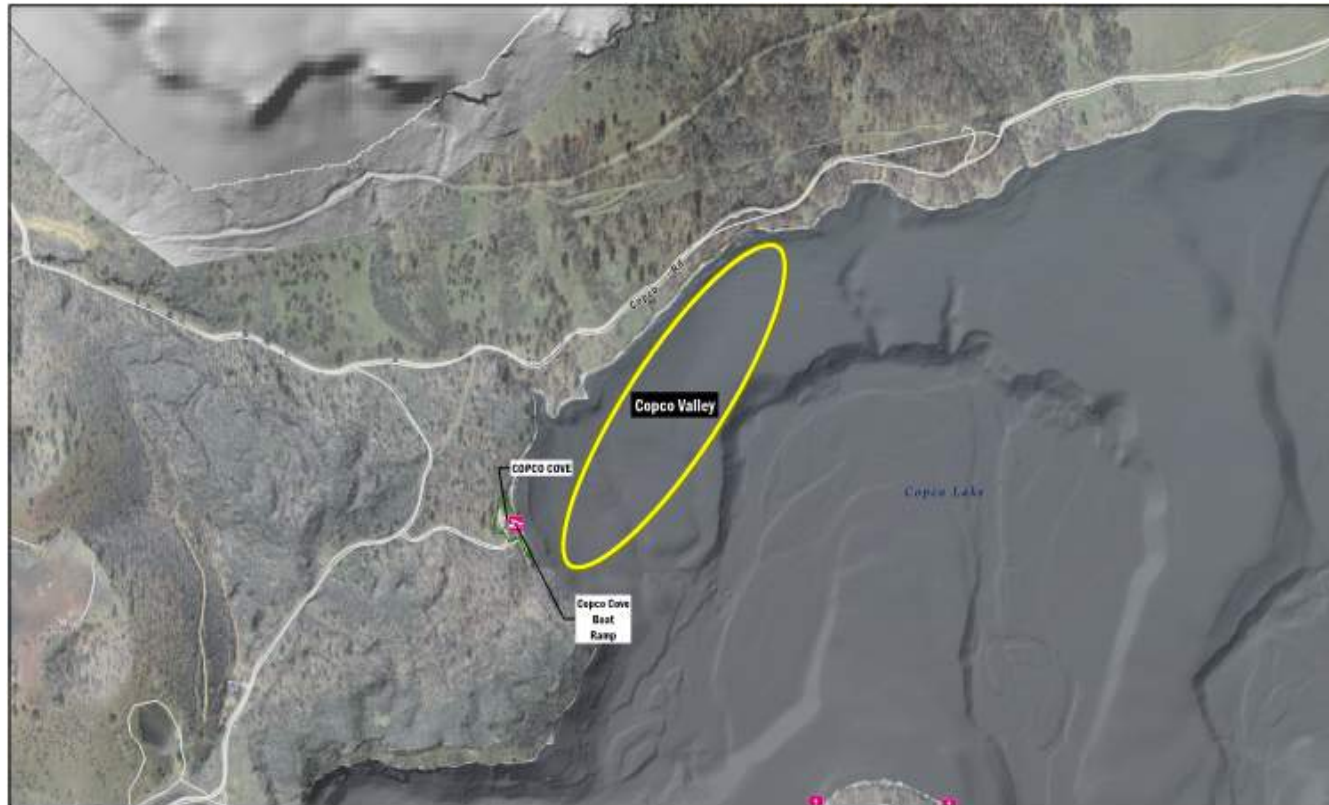
- Suitable for rafting, boating, fishing, and passive recreation
- Requires earthwork
- New ADA restroom
- Access from Highway 66 and dirt access road

Proposed Site #4: Across Frain Ranch



- Located on existing recreation facility
- Suitable for rafting, boating, fishing, and passive recreation
- May require earthwork
- New ADA restroom
- Access from Highway 66 and BLM Campground Road

Proposed Site #5: Copco Valley



- Suitable for rafting, boating, fishing, and passive recreation
- Requires earthwork and grading for access and parking
- Access from Copco Road

Proposed Site #6: Fall Creek Boat Launch



- Downstream of existing day use site
- Suitable for rafting, boating, fishing, and passive recreation
- Requires earthwork and grading for access and parking
- Access from Copco Road

Proposed Site #7: Camp Creek



- Suitable for rafting, boating, fishing, and passive recreation
- Requires earthwork
- Access from Copco Road

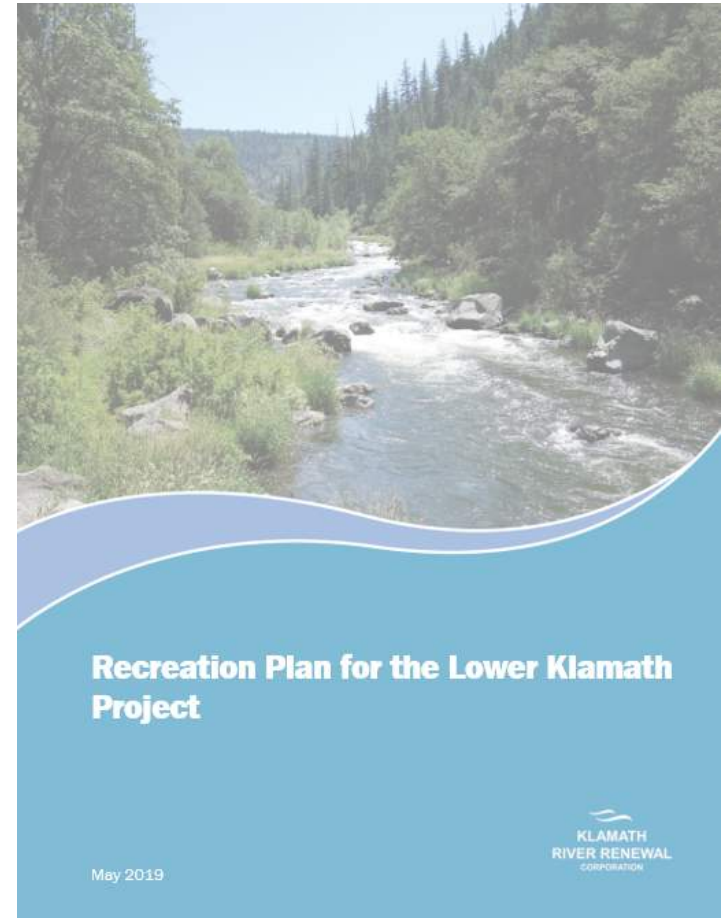
Proposed Site #8: Iron Gate Hatchery



- Near existing recreation facility in good condition
- Suitable for rafting, boating, fishing, and passive recreation
- Little earthwork required
- Access from Copco Road

Final Recreation Plan Development

- Recreation Plan currently under development
- California State Water Resource Control Board's Draft Environmental Impact Report (DEIR) identified a final recreation plan as a requirement for the project
- Final Recreation Plan will be submitted to FERC as part of KRRC's license surrender application



Recreation Plan Table of Contents

1. Introduction
2. Existing Conditions
3. Environmental Consequences
4. Desired Outcomes (Summary / Description of Desired Opportunities)
5. Planning Direction
6. Selection of Preferred Recreation Opportunities
 - 6.1 Evaluation Process
 - 6.2 Evaluation Results
7. Proposed Recreation Opportunities

Next Steps

Task	Schedule
KRRC recreation stakeholder outreach	Ongoing
KRRC stakeholder follow-up / phone calls	Ongoing
Stakeholders submit written feedback to KRRC for consideration in its draft recreation plan concepts	February 2019
Stakeholder Webinar for Draft Recreation Plan	April 2019
Stakeholders submit written feedback to KRRC for consideration in its revised Recreation Plan	April 2019
KRRC to submit Recreation Plan to FERC	May 2019



Thank You!

Send comments to:

Darcy Wheelles

KRRC Outreach & Communications

darcy@KlamathRenewal.org

415-820-4433

Chris Park

KRRC Technical Representative Team

parkce@cdmsmith.com

916-576-7497