

EXHIBIT B

UNITED STATES OF AMERICA BEFORE THE FEDERAL ENERGY REGULATORY COMMISSION

PacifiCorp)	Project No. P-2082-062
)	
and)	
)	
Klamath River Renewal Corporation)	Project No. P-14803-000

PACIFICORP'S RESPONSES TO ADDITIONAL INFORMATION REQUEST QUESTION NOS. 7, 8, 9 AND 11

I. INTRODUCTION

On April 24, 2017, the Federal Energy Regulatory Commission (FERC or Commission) issued an Additional Information Request (AIR) in connection with PacifiCorp's and the Klamath River Renewal Corporation's (KRRC) Joint Application for Approval of License Amendment and License Transfer (Joint Transfer Application). PacifiCorp and KRRC conferred and determined that it was most appropriate for KRRC to respond to AIR questions 1, 2, 3, 4, 5, 6 and 10, and for PacifiCorp to respond to AIR questions 7, 8, 9 and 11.

Accordingly, PacifiCorp has prepared the responses to AIR questions 7, 8, 9 and 11 below. These responses are solely and exclusively attributable to PacifiCorp.

II. PACIFICORP'S RESPONSES TO AIR QUESTIONS 7, 8, 9 AND 11

AIR Question 7

Section 7.5 of the Klamath Hydroelectric Settlement Agreement in Attachment A of the September 23, 2016 Transfer Application states that PacifiCorp and the Bureau of Reclamation have entered into an agreement to transfer the Keno development from PacifiCorp to Interior.

The September 23, 2016 Transfer Application, however, does not request to remove the Keno development from the project. The final Environmental Impact Statement for relicensing of the Klamath Hydroelectric Project, issued on November 16, 2007, found that the Keno development “results in no benefit to, or a small net loss of, generation at PacifiCorp’s downstream developments.” (Final EIS at 5-71). The Commission has found that developments that do not significantly benefit downstream generation do not require licensing. Please state whether you would like the Commission to consider whether the Keno development can be removed from the project.

PacifiCorp Response 7

PacifiCorp is not requesting that the Commission consider whether the Keno development can be removed from the Klamath Hydroelectric Project at this time. PacifiCorp intends to file a request that the Commission remove the Keno development from the project boundary after the KRRC accepts the new license for the Lower Klamath Project.

AIR Question 8

Section 7.6.6 of the Klamath Hydroelectric Settlement Agreement filed as Attachment A of the September 23, 2016 Transfer Application provides that the Iron Gate Hatchery will be transferred to the state of California upon the transfer of the Iron Gate development to the Klamath River Renewal Corporation. The September 23, 2016 Transfer Application, however, does not request to transfer ownership of the Iron Gate Hatchery or to remove the hatchery from the project license. Please explain whether and how you intend to request to transfer ownership of the Iron Gate Hatchery.

PacifiCorp Response 8

The Joint Transfer Application includes the Iron Gate Hatchery in the portions of the Klamath Hydroelectric Project to be designated as the Lower Klamath Project (see Joint Transfer Application, Attachments C and E). As this question acknowledges, Section 7.6.6 of the Klamath Hydroelectric Settlement Agreement provides that the Iron Gate Hatchery will be transferred to the state of California as part of the negotiated settlement related to removal of the four main-stem dams of the Klamath Project. Section 7.6.6 states that the transfer will be effectuated either “at the time of transfer to the DRE of the Iron Gate Hydro Development or such other time agreed by the Parties.” Implementation of this provision is a matter of ongoing discussion by and between KRRC, the state of California and PacifiCorp. Any transfer of title to the Iron Gate Hatchery to the state of California will be effectuated in compliance with FERC processes, policy, and precedent.

AIR Question 9

Section 9.2 of the Operations and Maintenance Agreement in Attachment A of the March 1, 2017 Supplemental Filing states that “PacifiCorp shall notify KRCC prior to undertaking any material modification or alteration to the facilities.” Is PacifiCorp contemplating any material modifications or alterations?

PacifiCorp Response 9

No, PacifiCorp is not contemplating any material modifications or alterations to the facilities at this time.

AIR Question 11

On page 6 of the application, PacifiCorp says it has “included as Attachments D and E charts listing the exhibit drawings and maps for the Klamath Project (Project No. 2082) and for

the portions of the Project to be designated as the Lower Klamath Project, indicating which development is depicted in each drawing or map. When the KRRC files the documents conveying titles to the Lower Klamath Project from PacifiCorp to the KRRC, it will also file for Commission approval the exhibits for the Lower Klamath Project with the correct project number designation. PacifiCorp will file updated exhibits for the Klamath Project (Project No. 2082) for Commission approval at that time.”

Pursuant to the Commission’s regulations at 18 CFR, section 4.201 (c), the amendment application must contain those exhibits that require revision in light of the nature of the proposed amendment. Therefore, the licensee must include with the amendment application revised exhibits F and G to reflect the proposed changes. Please refer to the attached list of current exhibit drawings under the license, and provide revised exhibits accordingly. Any exhibit drawings must be prepared in accordance with 18 CFR sections 4.39 and 4.41 (g) and (h).

PacifiCorp Response 11

The draft Exhibit M drawings for the Klamath Hydroelectric Project and the new Lower Klamath Project, filed respectively as Attachments B and C to the Joint Transfer Application, show the proposed project boundary changes.

Attached to this AIR response as Attachment H are provisional project boundary drawings that provide additional detail on the proposed boundary changes. To date, PacifiCorp has determined that three drawings require revisions in light of the proposed amendment. These are drawings 2082-124, 2082-125, and 2082-228, which represent the separation of the Copco and Fall Creek developments. PacifiCorp has prepared these provisional drawings to more clearly define the boundaries for the Klamath Hydroelectric Project and the new Lower Klamath

Project. The new drawing numbers are referenced in the table of exhibits included in Attachment H.

Development of updated Exhibits F and G for the Klamath Hydroelectric Project and the new Lower Klamath Project is currently underway. As the Commission is aware, preparation of new exhibits for large projects requires a substantial amount of effort. PacifiCorp respectfully requests additional time to continue developing the exhibits and greatly appreciates the Commission's flexibility in allowing for this work to be completed. PacifiCorp further reiterates here the request made in the Joint Transfer Application that updated exhibits for the Klamath Hydroelectric Project and the Lower Klamath Project be filed for approval at a later date, and that FERC approve the Joint Transfer Application based on the draft Exhibit M drawings filed as attachments to the Joint Transfer Application and further refined in the provisional project boundary drawings attached to this AIR response as Attachment H.

Below are the steps PacifiCorp is taking to develop the exhibits:

1. **Finalize list of exhibit drawings to update.** As indicated above, three drawings require substantial revisions due to the proposed amendment. With respect to the remaining exhibit drawings, PacifiCorp is currently evaluating whether these drawings have to be updated to be fully compliant with current Commission standards. Once this evaluation is complete, PacifiCorp will have a full list of drawings that require updating. This list will further guide the efforts in Step 2, below.
2. **Collect information.** Collection of the data needed to update and verify the boundaries is currently underway. This involves retaining a survey company, reviewing title reports, collecting existing spatial data, verifying ownership, and identifying problem areas (including overlap, gaps, and ownership questions). It also requires field surveys and

other research to resolve problem areas and updates to the spatial data supporting the project boundaries. Once the data collection is complete and the problem areas addressed, the data set will be subjected to quality control review.

3. **Redraw and submit revised exhibits.** Using the collected and verified data, the project boundaries will be re-drawn to fully meet Commission standards. These drawings will then be reviewed by PacifiCorp staff and provided to the surveyor for approval. Once approved by the surveyor, the updated exhibits will be filed with FERC for approval.

As to timing, PacifiCorp proposes to file with the Commission an update on development of the proposed Exhibits F and G for the Klamath Hydroelectric Project and the Lower Klamath Project by November 17, 2017.

III. CONCLUSION

PacifiCorp is available to answer any additional questions FERC staff may have on these issues or other matters regarding the Joint Transfer Application.

Respectfully submitted this 23rd day of June, 2017

/s/ Hallie Meushaw
Hallie Meushaw
Counsel for PacifiCorp
Troutman Sanders
600 Peachtree Street, Suite 5200
Atlanta, Georgia 30308
(t) 404.885.3660
(f) 404.885.3900
(e) hallie.meushaw@troutmansanders.com

ATTACHMENT H
Exhibit K Updates Matrix and Updated Maps

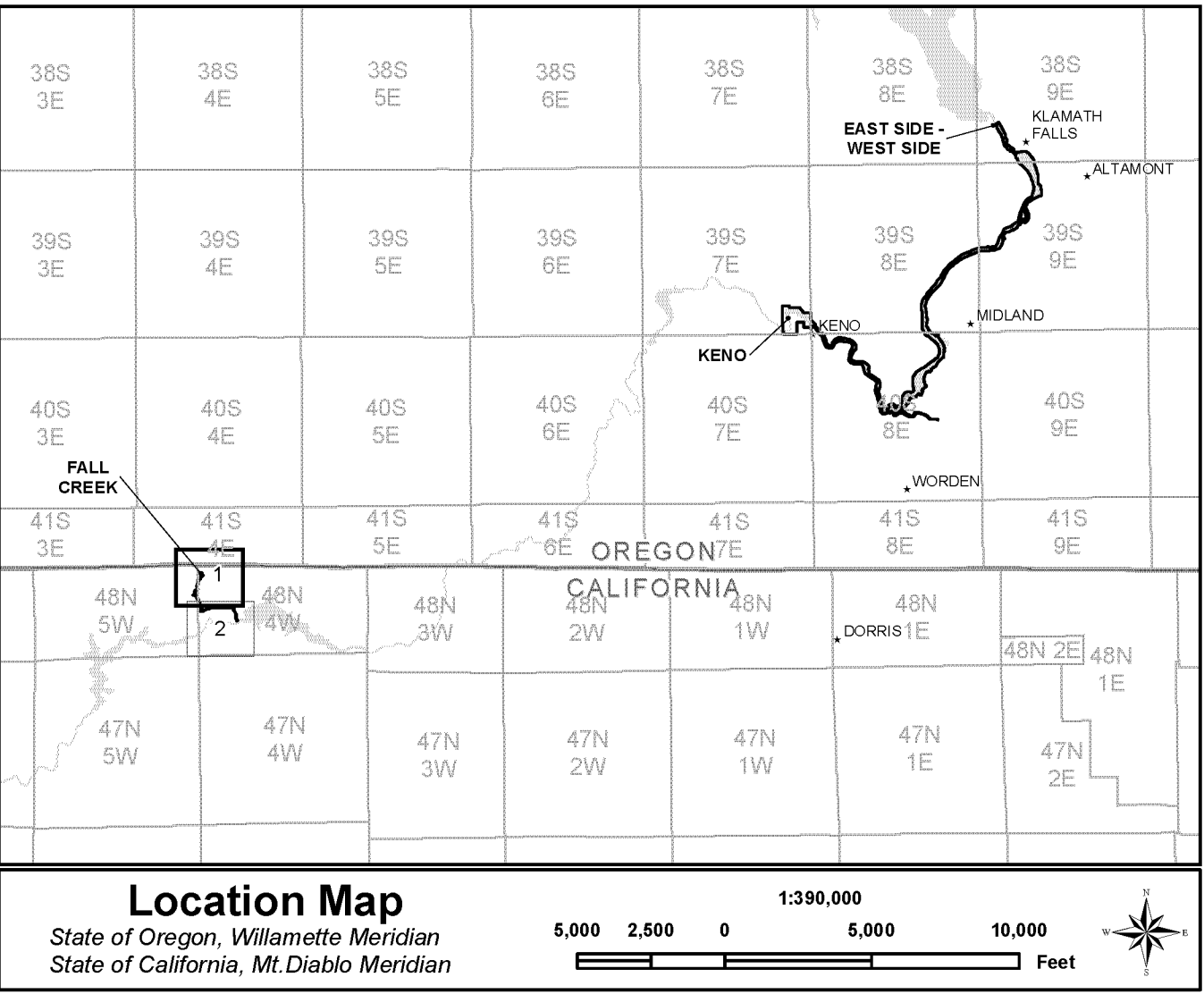
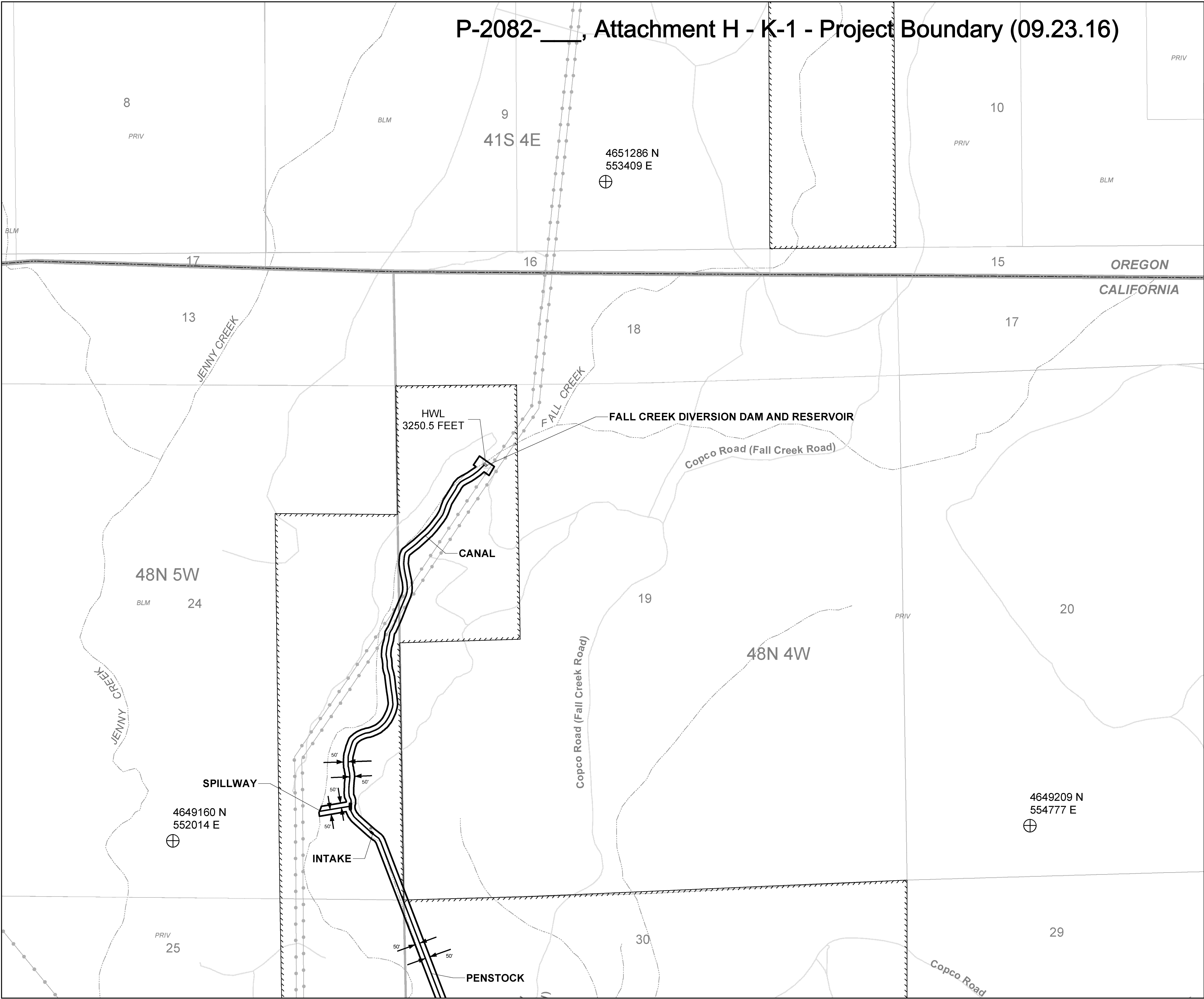
Attachment H - Exhibit K Updates Matrix and Updated Maps

Project No.	Drawing No.	Exhibit No.	Exhibit suffix	Super-seded No.	Description	Orderdate	Comment	Exhibit Revisions Proposed
2082	47	K-4	-1		Access Road Location	09/15/1959	Drawing revised in 10/30/63 order.	No change
2082	48	K-4	-2		Access Road Location	09/15/1959		No change
2082	49	K-4	-3		Access Road Location	09/15/1959		No change
2082	50	K-4	-4		Access Road Location	09/15/1959		No change
2082	51	K-4	-5	11	Topographic Map of Conduit, Forebay, Tunnel, Penstock, etc...	09/15/1959		No change
2082	52	K-4	-6	12	Topographic Map of Conduit, Forebay, Tunnel, Penstock, etc...	09/15/1959	Drawing revised in 10/30/63 order.	No change
2082	53	K-4	-7	13	Topographic Map of Conduit, Forebay, Tunnel, Penstock, etc...	09/15/1959	Drawing revised in 10/30/63 order.	No change
2082	54	K-4	-8	14	Topographic Map of Conduit, Forebay, Tunnel, Penstock, etc...	09/15/1959		No change
2082	55	K-4	-9	15	Topographic Map of Conduit, Forebay, Tunnel, Penstock, etc...	09/15/1959		No change
2082	56	L-4	-1	1644	Diversion Dam-Plan, Section, Details, and Fish Protection Arrangements	09/15/1959	Drawing revised in 2/16/67 order.	No change
2082	57	L-4	-2	18	Tunnel, Penstock, and Surge Tank Profile and Details	09/15/1959		No change
2082	58	L-4	-3	45	Forebay, Spillway, Deer Escape, Flume Plan, Section & Details	09/15/1959		No change
2082	59	L-4	-4	17	Powerhouse Plan and Section	09/15/1959		No change
2082	60	L-4	-5		14'0" Dia. Pipe Line-Profile and Section, Pipe Line Outlet and Spillway-Plan and Section, Deer Escape and Equipment Ramp-Plan and Section	09/15/1959		No change
2082	61	L-4	-6		Diversion Dam Grouting Record	09/15/1959		No change
2082	78	L-1			Iron Gate-East Side Development	01/13/1960		No change
2082	79	L-2			Iron Gate-East Side Development	01/13/1960		No change
2082	80	L-3			Iron Gate-East Side Development	01/13/1960		No change
2082	81	L-4			Iron Gate-East Side Development	01/13/1960		No change
2082	82	L-5			Iron Gate-East Side Development	01/13/1960		No change
2082	83	L-6			Iron Gate-East Side Development	01/13/1960		No change
2082	84	L-8			Iron Gate-West Side Development	01/13/1960		No change
2082	85	L-9			Iron Gate-West Side Development	01/13/1960		No change
2082	86	L-10			Iron Gate-West Side Development	01/13/1960		No change
2082	87	L-11			Iron Gate-West Side Development	01/13/1960		No change
2082	88	L-12			Iron Gate-West Side Development	01/13/1960		No change
2082	89	L-13			Iron Gate-West Side Development	01/13/1960		No change
2082	90	L-14			Iron Gate-West Side Development	01/13/1960		No change
2082	95	L-24			Copco No. 1 Development	01/13/1960		No change
2082	96	L-25			Copco No. 1 Development	01/13/1960		No change
2082	97	L-26			Copco No. 1 Development	01/13/1960		No change
2082	98	L-27			Copco No. 1 Development	01/13/1960		No change
2082	99	L-28			Copco No. 1 Development	01/13/1960		No change
2082	100	L-29			Copco No. 1 Development	01/13/1960		No change
2082	101	L-30			Copco No. 1 Development	01/13/1960		No change
2082	102	L-31			Copco No. 1 Development	01/13/1960		No change
2082	103	L-32			Copco No. 2 Development	01/13/1960		No change
2082	104	L-33			Copco No. 2 Development	01/13/1960		No change
2082	105	L-33	-A		Copco No. 2 Development	01/13/1960		No change
2082	106	L-34			Copco No. 2 Development	01/13/1960		No change
2082	107	L-35			Copco No. 2 Development	01/13/1960		No change
2082	108	L-36			Copco No. 2 Development	01/13/1960		No change
2082	109	L-37			Copco No. 2 Development	01/13/1960		No change
2082	110	L-38			Copco No. 2 Development	01/13/1960		No change
2082	120	J-		77	Project Area and Boundaries	06/21/1962		No change
2082	121	K-			Project Area and Boundaries	06/21/1962		No change
2082	123	K-			Project Area and Boundaries	06/21/1962		No change
2082	124	K-			Project Area and Boundaries	06/21/1962		Four revised sheets replace FERC Drawing No. 2082-124 for Lower Klamath Project, Copco No. 1 Development: P-14803-____, K-1, Project Boundary P-14803-____, K-2, Project Boundary P-14803-____, K-3, Project Boundary P-14803-____, K-4, Project Boundary Description
2082	125	K-			Project Area and Boundaries	06/21/1962		Two revised sheets replace FERC Drawing No. 2082-125 for Lower Klamath Project Copco No. 2 Development: P-14803-____, K-3, Project Boundary (duplicate of K-3 above) P-14803-____, K-4, Project Boundary Description (duplicate of K-4 above)
2082	134	J-7		112	Iron Gate Development-General Map	11/21/1962		No change
2082	135	K-7	-1		Iron Gate Development-Project Boundary, Areas and Ownerships, Reservoir Area-Capacity Curves	11/21/1962		No change
2082	136	K-7	-2	113, 114	Iron Gate Development-Boundary Areas and Ownership	11/21/1962		No change
2082	137	K-7	-3	113, 114	Iron Gate Development-Boundary Areas and Ownership	11/21/1962		No change
2082	138	K-7	-4	113, 114	Iron Gate Development-Boundary Areas and Ownership	11/21/1962		No change
2082	139	K-7	-5	113, 114	Iron Gate Development-Boundary Areas and Ownership	11/21/1962		No change
2082	140	K-7	-6	113, 114	Iron Gate Development-Boundary Areas and Ownership	11/21/1962		No change
2082	141	K-7	-7	113, 114	Iron Gate Development-Boundary Areas and Ownership	11/21/1962		No change
2082	142	L-10		127-131	Plans and Sections of Dam	11/21/1962		No change
2082	143	L-11		127-131	Powerhouse Sections	11/21/1962		No change
2082	144	L-11		127-131	Powerhouse Plans and Sections	11/21/1962		No change
2082	145	L-12	-1		Fish Facilities Plans, Sections, and Details	11/21/1962		No change
2082	146	L-12	-2		Fish Facilities Water Supply Piping	11/21/1962		No change
2082	147	L-12	-3		Fish Facilities Fish Ladder, Plan and Sections	11/21/1962		No change

Attachment H - Exhibit K Updates Matrix and Updated Maps

2082	148	L-13		133	Spillway Trash Sluice Gate, Plan and Sections	11/21/1962		No change
2082	149	L-14	-1		Penstock, Plan, Profile, Sections, and Development	11/21/1962	Drawing revised in 2/16/67 order.	No change
2082	150	L-14	-2		Penstock-Concrete Encasement, Plan and Profile- Bypass Plan, Sections and Details	11/21/1962	Drawing revised in 2/16/67 order.	No change
2082	151	L-15			Spillway-Plan, Profile and Sections	11/21/1962		No change
2082	152	L-16	-1		Sluice and Diversion Tunnel, Gate Structure in Rock-Plan, Sections, and Details	11/21/1962		No change
2082	153	L-16	-2		Sluice and Diversion Tunnel, Gate Structure above Rock, Plan and Sections	11/21/1962		No change
2082	154	L-16	-3		Sluice and Diversion Tunnel, Gate Structure- Closure, Gate Sections	11/21/1962		No change
2082	155	L-17			Power Conduit Intake, Structure-Plan and Sections	11/21/1962		No change
2082	156	L-18	-1		Sluice and Diversion Tunnel, Plan and Profile, Outlet Structure Plan, Elevations and Section	11/21/1962		No change
2082	157	L-18	-2		Sluice and Diversion Tunnel, Intake Structure-Plan, Section, and Details	11/21/1962		No change
2082	165	K-8	-2		Keno Development	11/29/1965	Order incorrectly labelled drawing # 165 as exhibit L-22-2. Drawing should be labelled exhibit K-8-2.	No change
2082	176	K-8	-1		Keno Development-tunnel, canal, flume, penstock, & powerhouse	11/29/1965		No change
2082	178	L-10	-A	174	Iron Gate Development-Dam crest modifications	08/17/1966		No change
2082	179	L-15	-A	175	Iron Gate Development-Spillway modifications	08/17/1966		No change
2082	180	L-23	-1		Fish Hatchery location and plant plan	08/09/1967		No change
2082	181	L-23	-2		Fish Hatchery rearing ponds, building, aerator, and piping	08/09/1967		No change
2082	184	L-22	-1	167	Keno Development Dam and Spillway	03/21/1969		No change
2082	186	L-22	-5		Profile and Sections of Channel Improvements- River Mile 234.6-236	03/21/1969		No change
2082	188	R-2			Klamath River Projects General Map	09/18/1975		No change
2082	192	R-6			Copco No.1 and No.2 Developments Recreation Plan	09/18/1975		No change
2082	196	J-		163	General Map	09/25/1970		No change
2082	199	L-24			Powerhouse	09/25/1970		No change
2082	200	L-22	-4	170, 171	Plan of Channel Improvement River Mile 234.6-236	03/21/1969		No change
2082	201	L-2	-6	172, 173	Channel Improvement River Mile 236-242	06/20/1969		No change
2082	202	L-22	-7		Channel Improvement River Mile 242-250	06/20/1969		No change
2082	204	L-24		198	Fall Creek development diversion structures	06/06/1974		No change
2082	218	R-3		189	Iron Gate Development Recreation Plan	09/29/1976		No change
2082	219	R-4		190	Iron Gate Development Recreation Sites	09/29/1976		No change
2082	220	R-7		193	John C. Boyle Development Recreation Plan	09/29/1976		No change
2082	221	R-8		194	Keno Development Recreation Site Plan	09/29/1976		No change
2082	222	R-9			Link River Development General Plan	09/29/1976		No change
2082	223	R-10			Iron Gate Development Additional Recreational Sites	09/29/1976		No change
2082	228	K-9		197	Development Plan	08/22/1980		Three revised sheets replace FERC Drawing No. 2082-228 K-9 for Klamath Project, Fall Creek Development: P-2082-____, K-1, Project Boundary P-2082-____, K-2, Project Boundary P-2082-____, K-3, Project Boundary Description

P-2082-____, Attachment H - K-1 - Project Boundary (09.23.16)



- ★ City

⊕ Reference Point *

• Boundary Point **

— State Highway

— Road

— Existing Trail

— Transmission Line

▨ PacifiCorp Ownership

□ Non-PacifiCorp Ownership
- ▭ Project Boundary

▭ Adjacent Project

— Fall Creek Facility

▨ Project Recreation Area

▨ Non-Project Recreation Area

— State Line

— Stream

▭ Township/Range

▭ Section

Map Projection: UTM Zone 10, NAD 83, meters
* Reference Point coordinates are in meters.
** Boundary Point numbers correspond to boundary description table.

The project boundary represented on this drawing is developed with reasonable accuracy in accordance with FERC requirements***. Data was developed by PacifiCorp's GIS department from a variety of sources including Federal, State, County, and PacifiCorp GIS sources. No field surveys were conducted. The project boundary was initially digitized from scanned Exhibit K drawings that were georeferenced using sources such as digital USGS quad maps. Digital imagery was used in some areas to best fit the boundary to visible project features as indicated on the prior approved exhibits. Reasonable efforts have been made to ensure that positional accuracy conforms to National Map Accuracy Standards for maps at 1:24000 scale.

Public Land Survey data are approximately located and are based on the Willamette Meridian in Oregon and Mt. Diablo Meridian for California.

Normal Full Pool Elevation (HWL).
Elevations are referenced to
USGS Datum (NGVD 1929).

There are no federal lands within the Project Boundary on this sheet.

MAP TEXT ABBREVIATIONS:

- BLM = Bureau of Land Management
- STATE = State Owned Land
- CNTY = County Owned Land
- PRIV = Privately Owned Land
- POB = Point of Beginning

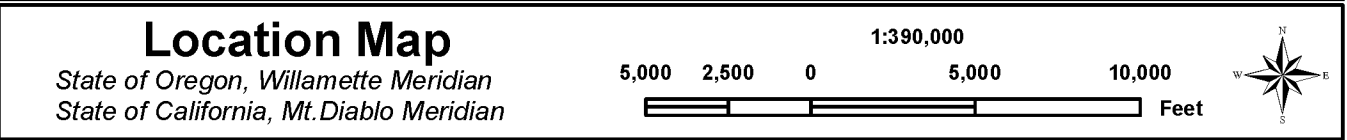
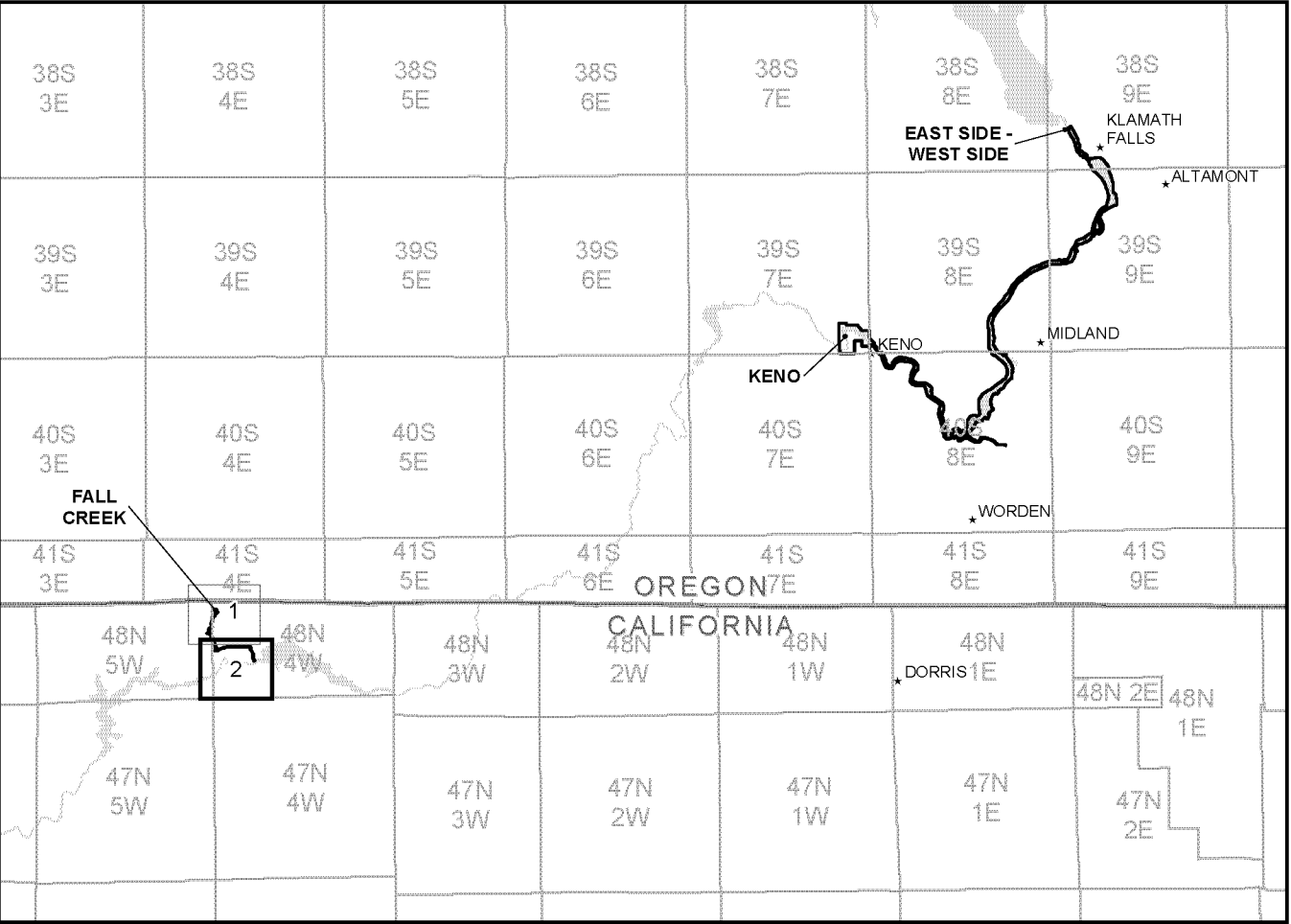
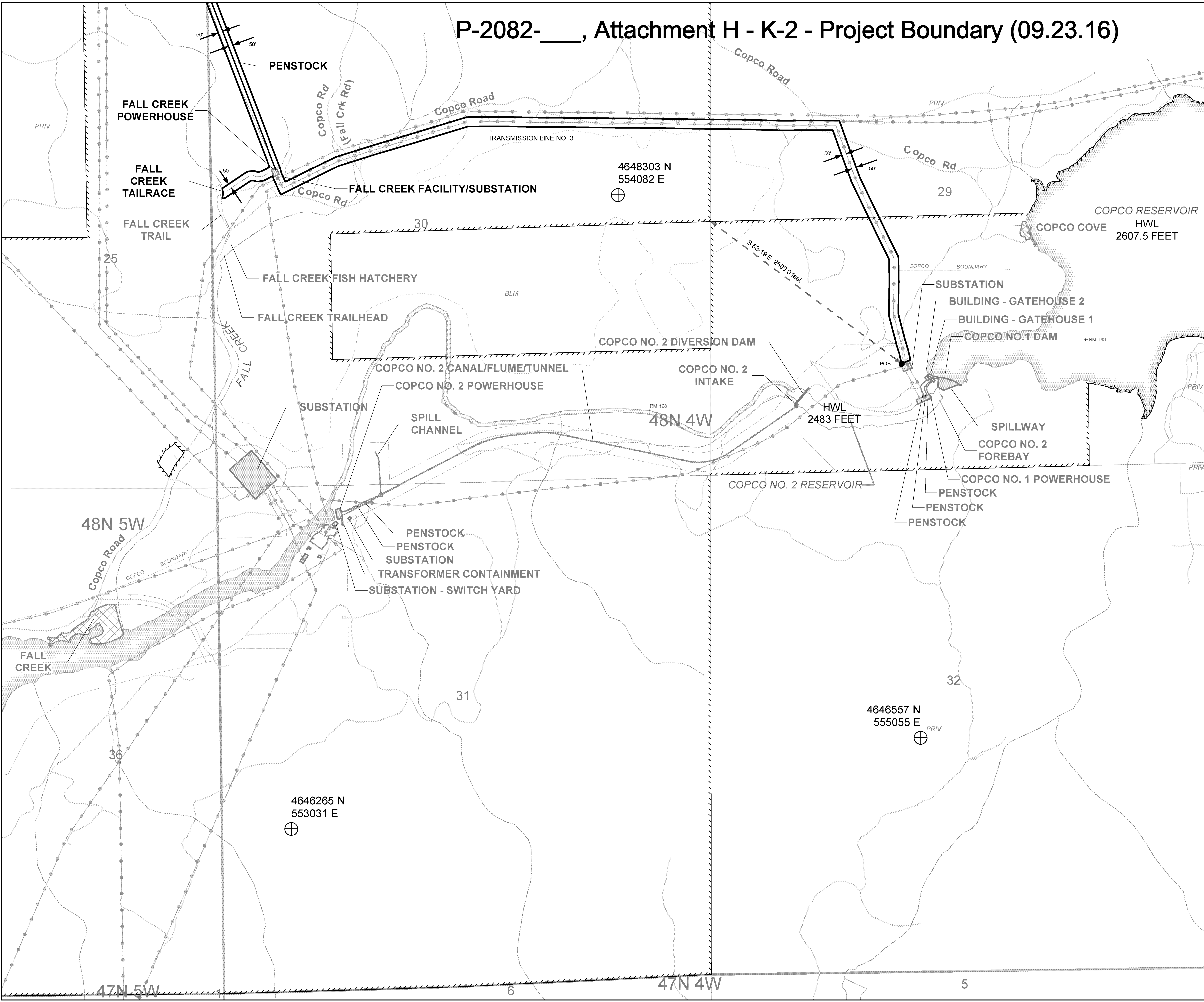
PacifiCorp has reviewed the project boundaries shown herein. PacifiCorp either owns in fee simple or possesses the necessary flowage easements or property rights for all lands drawn on the map that are inside the boundaries***.

***This exhibit has not yet been reviewed by a licensed surveyor. Parcel boundaries and ownership are based on PacifiCorp records and deeds will be re-plotted or re-verified. Further efforts to review control data and property information are underway and changes may be necessary as new data becomes available.



Exhibit K - 1		Rev. 0a
Klamath Hydroelectric Project FERC No. 2082		
Joint Application for License Transfer & License Amendment of Sept 23, 2016.		
Fall Creek Development		
Project Boundary		
Original Drawing Dated June 1, 2017		
Scale as shown		

P-2082-____, Attachment H - K-2 - Project Boundary (09.23.16)



- ★ City
- ⊕ Reference Point *
- Boundary Point **
- State Highway
- Road
- Existing Trail
- Transmission Line
- ▨ PacifiCorp Ownership
- Non-PacifiCorp Ownership
- ▭ Project Boundary
- ▭ Adjacent Project
- ▭ Fall Creek Facility
- ▨ Project Recreation Area
- ▨ Non-Project Recreation Area
- State Line
- Stream
- ▭ Township/Range
- ▭ Section

Map Projection: UTM Zone 10, NAD 83, meters
 * Reference Point coordinates are in meters.
 ** Boundary Point numbers correspond to boundary description table.

The project boundary represented on this drawing is developed with reasonable accuracy in accordance with FERC requirements***. Data was developed by PacifiCorp's GIS department from a variety of sources including Federal, State, County, and PacifiCorp GIS sources. No field surveys were conducted. The project boundary was initially digitized from scanned Exhibit K drawings that were georeferenced using sources such as digital USGS quad maps. Digital imagery was used in some areas to best fit the boundary to visible project features as indicated on the prior approved exhibits. Reasonable efforts have been made to ensure that positional accuracy conforms to National Map Accuracy Standards for maps at 1:24000 scale.

Public Land Survey data are approximately located and are based on the Willamette Meridian in Oregon and Mt. Diablo Meridian for California.

Normal Full Pool Elevation (HWL). Elevations are referenced to USGS Datum (NGVD 1929).
 There are no federal lands within the Project Boundary on this sheet.

MAP TEXT ABBREVIATIONS:
 - BLM = Bureau of Land Management
 - STATE = State Owned Land
 - CNTY = County Owned Land
 - PRIV = Privately Owned Land
 - POB = Point of Beginning

PacifiCorp has reviewed the project boundaries shown herein. PacifiCorp either owns in fee simple or possesses the necessary flowage easements or property rights for all lands drawn on the map that are inside the boundaries***.

***This exhibit has not yet been reviewed by a licensed surveyor. Parcel boundaries and ownership are based on PacifiCorp records and deeds will be re-plotted or re-verified. Further efforts to review control data and property information are underway and changes may be necessary as new data becomes available.



Exhibit K - 2 Klamath Hydroelectric Project FERC No. 2082 Joint Application for License Transfer & License Amendment of Sept 23, 2016. Fall Creek Development		Rev. 0a
Project Boundary Original Drawing Dated June 1, 2017 Scale as shown		
2082-124 CADD WORKING	2082-124 CADD WORKING	2082-124 CADD WORKING
2082-124 CADD WORKING	2082-124 CADD WORKING	2082-124 CADD WORKING

P-2082-____, Attachment H - K-3 - Project Boundary Description (09.23.16)

Project Boundary Table					
Point	Northing (Meters)	Easting (Meters)	Bearing	Distance (feet)	Remarks
					BEGINNING AT THE W 1/4 CORNER OF SEC 29 T48N R4W AND BEARING S53-19E 2,509.0 FEET (GIS CALCULATED) TO THE POB.
					BOUNDARY POB IS ON SUBSTATION FENCE LINE AND IS 50' FROM TRANSMISSION C.L.
					ALONG TRANSMISSION LINE BUFFER (50' FROM C.L.)
					INTX W/ FALL CREEK TAILRACE BUFFER (50' FROM C.L.)
					ALONG FALL CREEK TAILRACE BUFFER (50' FROM C.L.)
					INTX W/ FALL CREEK
					ALONG FALL CREEK
					INTX W/ FALL CREEK TAILRACE BUFFER (50' FROM C.L.)
					ALONG FALL CREEK TAILRACE BUFFER (50' FROM C.L.)
					INTX W/ PENSTOCK BUFFER (50' FROM C.L.)
					ALONG PENSTOCK BUFFER (50' FROM C.L.)
					INTX W/ SPILLWAY BUFFER (50' FROM C.L.)
					ALONG SPILLWAY BUFFER (50' FROM C.L.)
					INTX W/ FALL CREEK
					ALONG FALL CREEK
					INTX W/ SPILLWAY BUFFER (50' FROM C.L.)
					ALONG SPILLWAY BUFFER (50' FROM C.L.)
					INTX W/ CANAL BUFFER (50' FROM C.L.)
					ALONG CANAL BUFFER (50' FROM C.L.)
					ALONG DIVERSION DAM
					INTX W/ CANAL BUFFER (50' FROM C.L.)
					ALONG CANAL BUFFER (50' FROM C.L.)
					INTX W/ PENSTOCK BUFFER (50' FROM C.L.)
					ALONG PENSTOCK BUFFER (50' FROM C.L.)
					INTX W/ TRANSMISSION LINE BUFFER (50' FROM C.L.)
					ALONG TRANSMISSION LINE BUFFER (50' FROM C.L.)
					ALONG SUBSTATION FENCE TO POB

- Notes:**
- 1) Information in table is based on GIS derived coordinates and measurements and is not intended to represent station points and measurements established by ground surveys.
 - 2) Coordinates and Bearings are in UTM Zone 10, NAD 83, meters.
 - 3) Distances are in U.S. survey feet.
 - 4) Project is located in the state of California, Mt. Diablo Meridian.

This revised project boundary exhibit was prepared for the application for amendment and partial transfer of the license for the Klamath Hydroelectric Project (FERC No. 2082). It supersedes the current exhibit sheets for the area where the Klamath Hydroelectric Project and the proposed Lower Klamath Project (FERC No. 14803) adjoin. The project boundary on this exhibit represents the same project boundary as shown on the approved Exhibit K sheets for the Fall Creek, Copco No. 1, and Copco No. 2 developments of the existing Klamath Hydroelectric Project, and adds the separate project boundaries where the Fall Creek transmission line corridor connects to the substation northwest of the Copco No. 1 powerhouse.

The project boundary represented on this drawing is developed with reasonable accuracy in accordance with FERC requirements***. Data was developed by PacifiCorp's GIS department from a variety of sources including Federal, State, County, and PacifiCorp GIS sources. No field surveys were conducted. The project boundary was initially digitized from scanned Exhibit K drawings that were georeferenced using sources such as digital USGS quad maps. Digital imagery was used in some areas to best fit the boundary to visible project features as indicated on the prior approved exhibits. Reasonable efforts have been made to ensure that positional accuracy conforms to National Map Accuracy Standards for maps at 1:24000 scale.

Public Land Survey data are approximately located and are based on the Willamette Meridian in Oregon and Mt. Diablo Meridian for California.

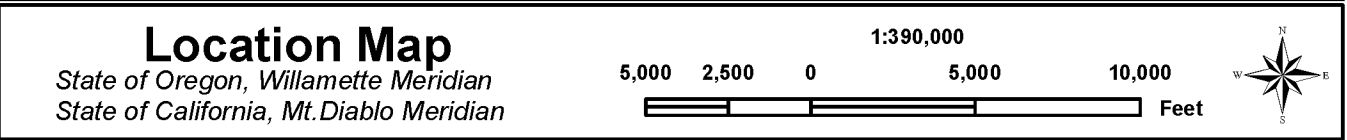
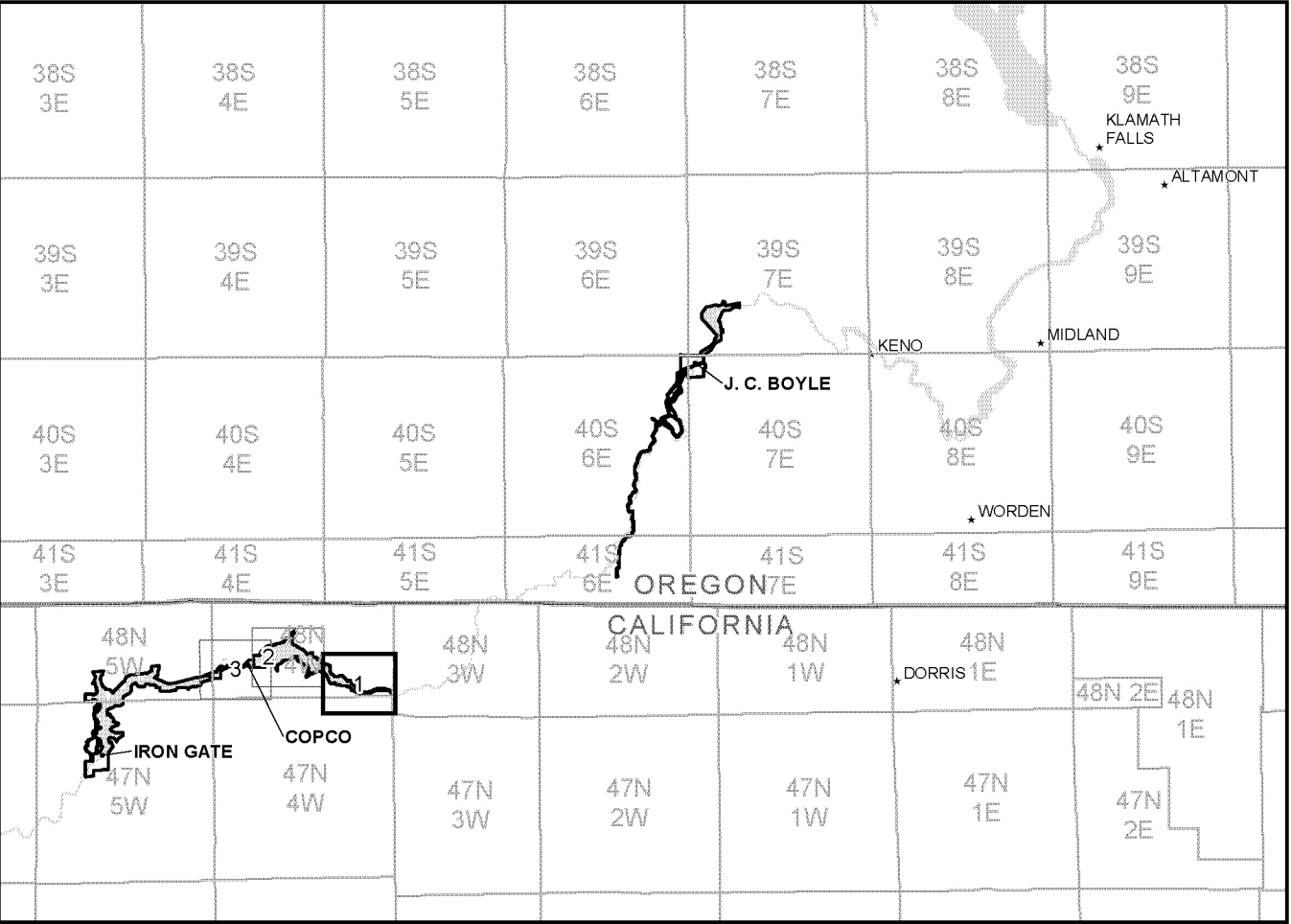
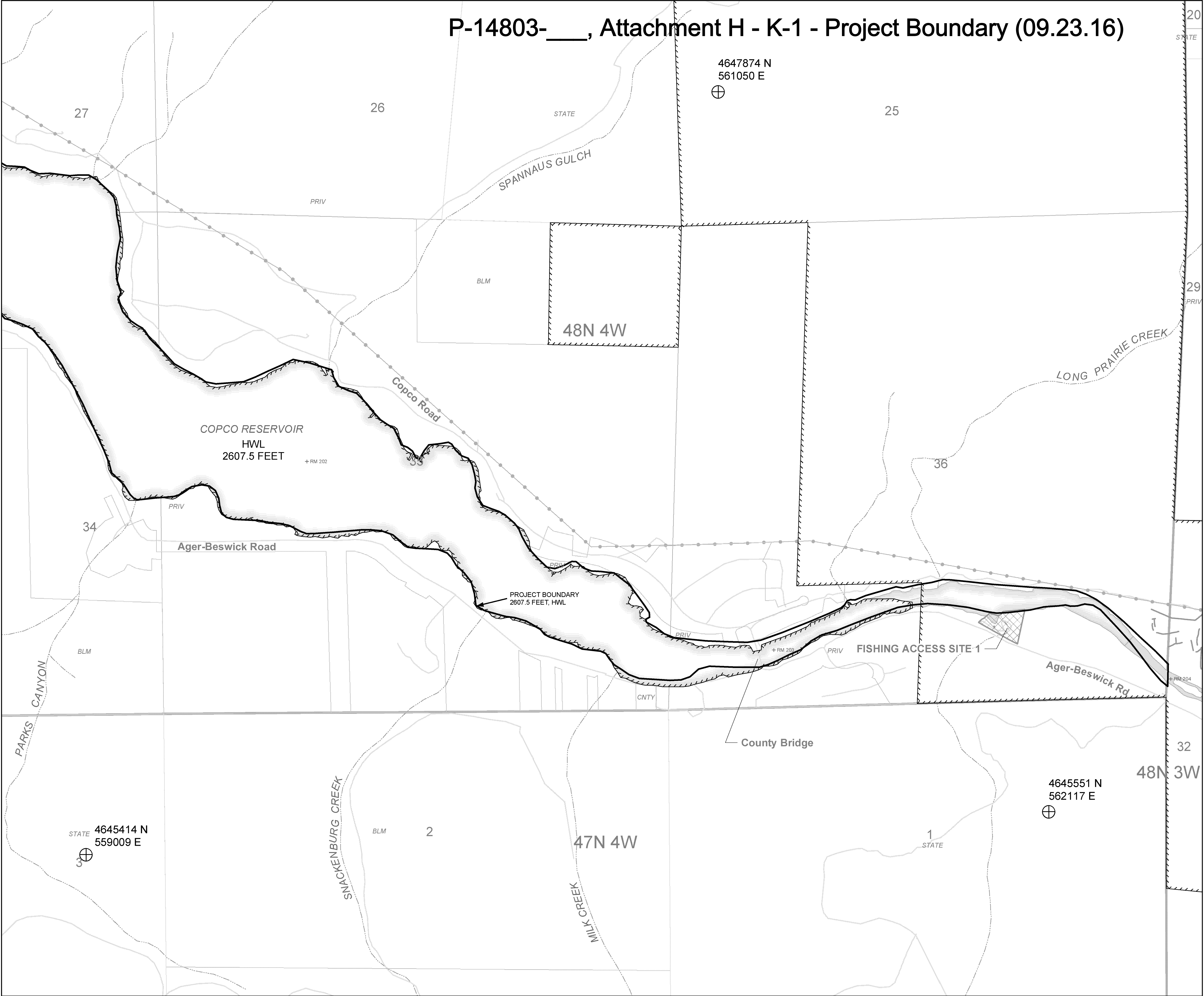
***This exhibit has not yet been reviewed by a licensed surveyor. Parcel boundaries and ownership are based on PacifiCorp records and deeds will be re-plotted or re-verified. Further efforts to review control data and property information are underway and changes may be necessary as new data becomes available.

Normal Full Pool Elevation (HWL).
Elevations are referenced to
USGS Datum (NGVD 1929).



		Joint Application for License Amendment & License Transfer		DESCRIPTION	<div>Exhibit K - 3</div> <div>Klamath Hydroelectric Project FERC No. 2082</div> <div>Joint Application for License Transfer & License Amendment of Sept 23, 2016.</div> <div>Fall Creek Development</div> <div>Project Boundary Description</div> <div>Original Drawing Dated June 1, 2017</div>	Rev. 0a
0a	NO	3/2/2016	N/A	OLD FERC NO		

P-14803-____, Attachment H - K-1 - Project Boundary (09.23.16)



- ★ City
- ⊕ Reference Point *
- Boundary Point **
- State Highway
- Road
- Existing Trail
- Transmission Line
- ▨ PacifiCorp Ownership
- Non-PacifiCorp Ownership
- ▨ Project Boundary
- ▨ Adjacent Project
- ▨ Copco Facility
- ▨ Project Recreation Area
- ▨ Non-Project Recreation Area
- ▨ State Line
- ▨ Stream
- ▨ Township/Range
- ▨ Section

Map Projection: UTM Zone 10, NAD 83, meters
 * Reference Point coordinates are in meters.
 ** Boundary Point numbers correspond to boundary description table.

The project boundary represented on this drawing is developed with reasonable accuracy in accordance with FERC requirements***. Data was developed by PacifiCorp's GIS department from a variety of sources including Federal, State, County, and PacifiCorp GIS sources. No field surveys were conducted. The project boundary was initially digitized from scanned Exhibit K drawings that were georeferenced using sources such as digital USGS quad maps. Digital imagery was used in some areas to best fit the boundary to visible project features as indicated on the prior approved exhibits. Reasonable efforts have been made to ensure that positional accuracy conforms to National Map Accuracy Standards for maps at 1:24000 scale.

Public Land Survey data are approximately located and are based on the Willamette Meridian in Oregon and Mt. Diablo Meridian for California.

Normal Full Pool Elevation (HWL).
 Elevations are referenced to USGS Datum (NGVD 1929).

There are no federal lands within the Project Boundary on this sheet.

MAP TEXT ABBREVIATIONS:
 - BLM = Bureau of Land Management
 - STATE = State Owned Land
 - CNTY = County Owned Land
 - PRIV = Privately Owned Land
 - POB = Point of Beginning

PacifiCorp has reviewed the project boundaries shown herein. PacifiCorp either owns in fee simple or possesses the necessary flowage easements or property rights for all lands drawn on the map that are inside the boundaries***.

***This exhibit has not yet been reviewed by a licensed surveyor. Parcel boundaries and ownership are based on PacifiCorp records and deeds will be re-plotted or re-verified. Further efforts to review control data and property information are underway and changes may be necessary as new data becomes available.



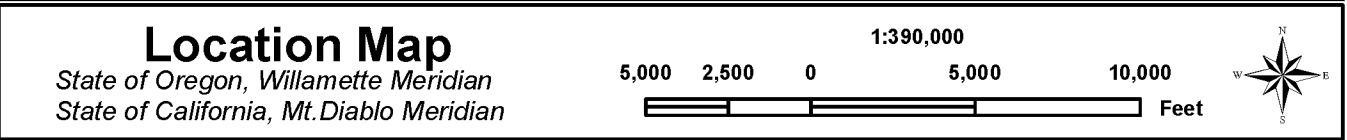
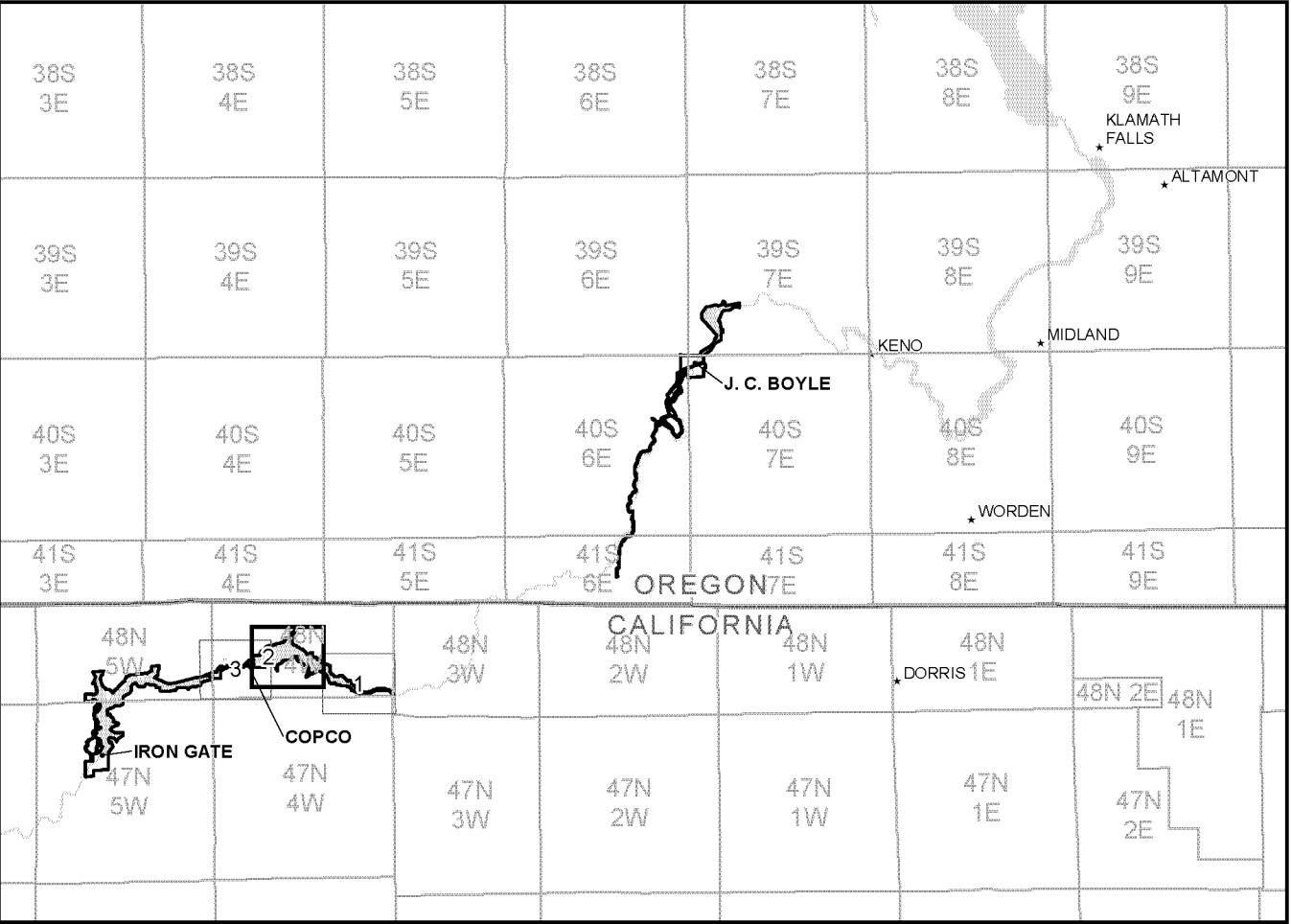
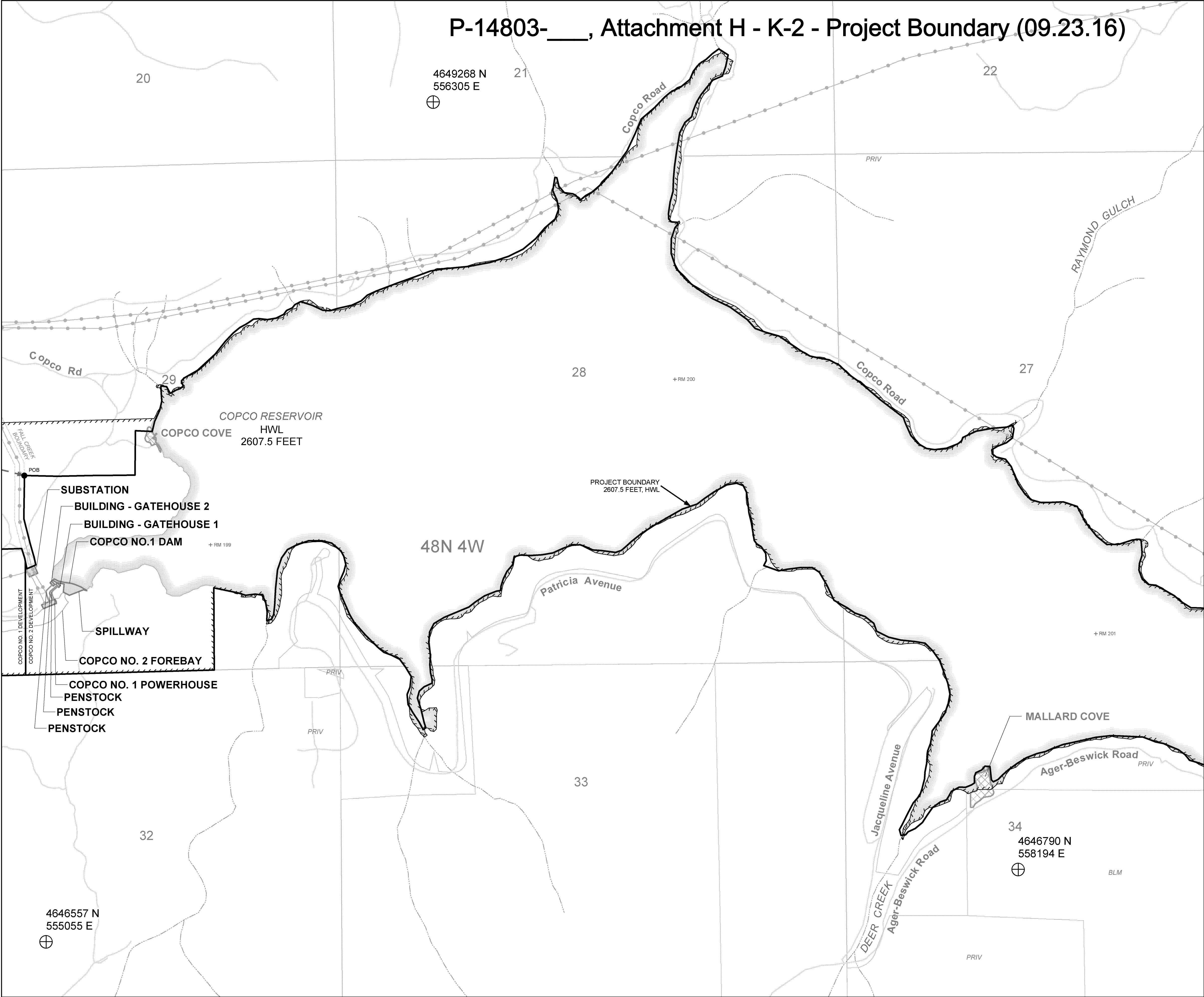
Exhibit K - 1
Lower Klamath Hydroelectric Project FERC No. 14803
 Joint Application for License Transfer & License Amendment of Sept 23, 2016.
 Copco No. 1 and 2 Developments

Project Boundary
 Original Drawing Dated June 1, 2017
 Scale as shown

Rev. 0a

Scale bar: 1,000, 500, 0, 1,000, 2,000 Feet
 North arrow pointing up.

P-14803-____, Attachment H - K-2 - Project Boundary (09.23.16)



- ★ City
- ⊕ Reference Point *
- Boundary Point **
- State Highway
- Road
- Existing Trail
- Transmission Line
- ▨ PacifiCorp Ownership
- Non-PacifiCorp Ownership
- ▨ Project Boundary
- Adjacent Project
- Copco Facility
- ▨ Project Recreation Area
- ▨ Non-Project Recreation Area
- State Line
- Stream
- Township/Range
- Section

Map Projection: UTM Zone 10, NAD 83, meters
 * Reference Point coordinates are in meters.
 ** Boundary Point numbers correspond to boundary description table.

The project boundary represented on this drawing is developed with reasonable accuracy in accordance with FERC requirements***. Data was developed by PacifiCorp's GIS department from a variety of sources including Federal, State, County, and PacifiCorp GIS sources. No field surveys were conducted. The project boundary was initially digitized from scanned Exhibit K drawings that were georeferenced using sources such as digital USGS quad maps. Digital imagery was used in some areas to best fit the boundary to visible project features as indicated on the prior approved exhibits. Reasonable efforts have been made to ensure that positional accuracy conforms to National Map Accuracy Standards for maps at 1:24000 scale.

Public Land Survey data are approximately located and are based on the Willamette Meridian in Oregon and Mt. Diablo Meridian for California.

Normal Full Pool Elevation (HWL).
 Elevations are referenced to USGS Datum (NGVD 1929).

There are no federal lands within the Project Boundary on this sheet.

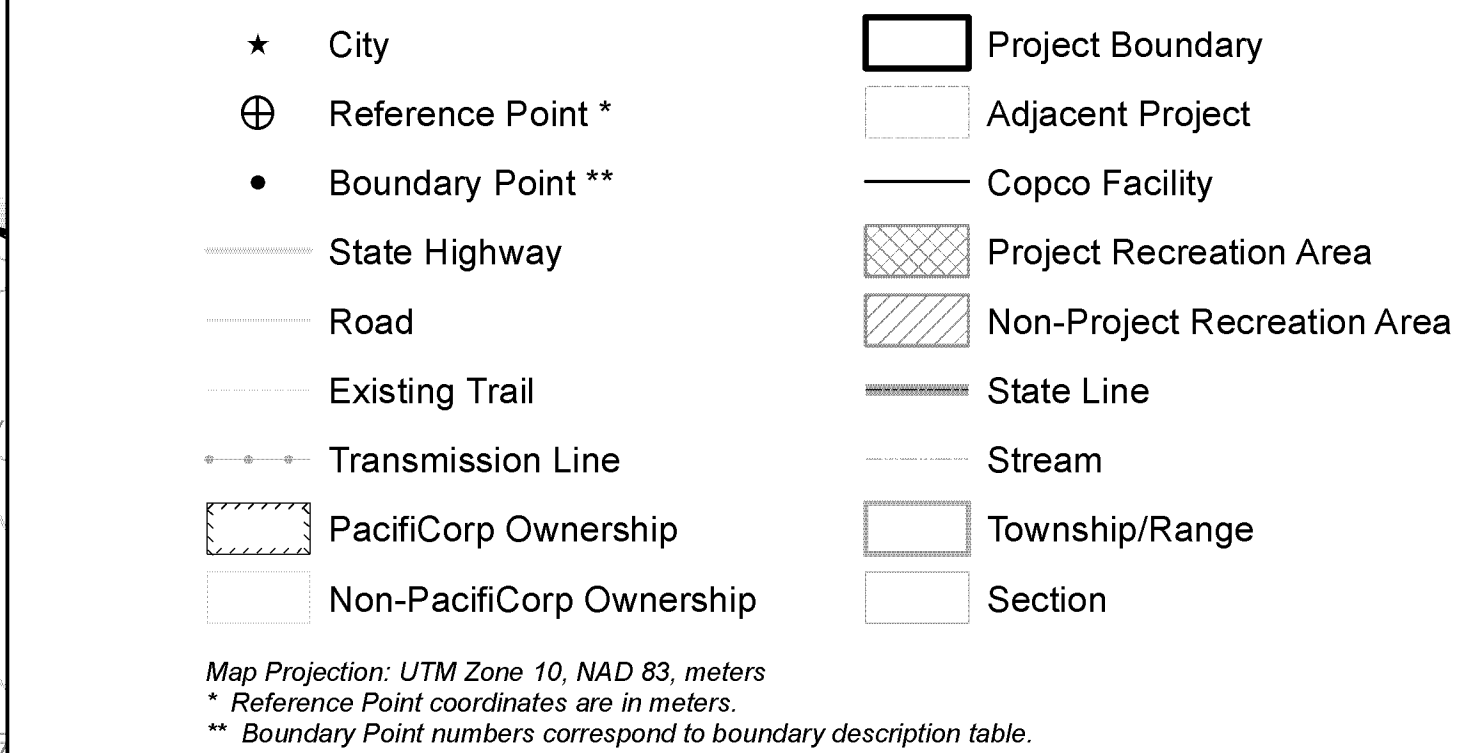
MAP TEXT ABBREVIATIONS:
 - BLM = Bureau of Land Management
 - STATE = State Owned Land
 - CNTY = County Owned Land
 - PRIV = Privately Owned Land
 - POB = Point of Beginning

PacifiCorp has reviewed the project boundaries shown herein. PacifiCorp either owns in fee simple or possesses the necessary flowage easements or property rights for all lands drawn on the map that are inside the boundaries***.

***This exhibit has not yet been reviewed by a licensed surveyor. Parcel boundaries and ownership are based on PacifiCorp records and deeds will be re-plotted or re-verified. Further efforts to review control data and property information are underway and changes may be necessary as new data becomes available.



Exhibit K - 2 Lower Klamath Hydroelectric Project FERC No. 14803 Joint Application for License Transfer & License Amendment of Sept 23, 2016. Copco No. 1 and 2 Developments Project Boundary Original Drawing Dated June 1, 2017 Scale as shown 1,000 500 0 1,000 2,000 Feet North arrow pointing up.		Rev. 0a
2017-12-14 2017-12-14 2017-12-14 2017-12-14	Joint Application for License Amendment & License Transfer 2017-12-14 2017-12-14 2017-12-14 2017-12-14	2017-12-14 2017-12-14 2017-12-14 2017-12-14

[illegible]

The project boundary represented on this drawing is developed with reasonable accuracy in accordance with FERC requirements***. Data was developed by PacifiCorp's GIS department from a variety of sources including Federal, State, County, and PacifiCorp GIS sources. No field surveys were conducted. The project boundary was initially digitized from scanned Exhibit K drawings that were georeferenced using sources such as digital USGS quad maps. Digital imagery was used in some areas to best fit the boundary to visible project features as indicated on the prior approved exhibits. Reasonable efforts have been made to ensure that positional accuracy conforms to National Map Accuracy Standards for maps at 1:240000 scale.

Public Land Survey data are approximately located and are based on the Willamette Meridian in Oregon and Mt. Diablo Meridian for California.

Normal Full Pool Elevation (HWL).
Elevations are referenced to
USGS Datum (NGVD 1929).



There are no federal lands within the Project Boundary on this sheet.

MAP TEXT ABBREVIATIONS:

-BLM = Bureau of Land Management	PacificCorp has reviewed the project boundaries shown herein.
-STATE = State Owned Land	PacificCorp either owns in fee simple or possesses the necessary
-CNTY = County Owned Land	flowage easements or property rights for all lands drawn on the
-PRIV = Privately Owned Land	map that are inside the boundaries***.
-POB = Point of Beginning	

***This exhibit has not yet been reviewed by a licensed surveyor. Parcel boundaries and ownership are based on PacifiCorp records and deeds will be re-plotted or re-verified. Further efforts to review control data and property information are underway and changes may be necessary as new data becomes available.



	Exhibit K - 3 Lower Klamath Hydroelectric Project FERC No. 14803 Joint Application for License Transfer & License Amendment of Sept 23, 2016. Copco No. 1 and 2 Developments	Rev. 0a 
Joint Appl. to License Amendment & License Transfer DESCRIPTION	Project Boundary Original Drawing Dated June 1, 2017 Scale as shown	
		
208-124 OLD FERC NO		
9/23/2016 DATE		
0a NO		

P-14803-____, Attachment H - K-4 - Project Boundary Description (09.23.16)

Project Boundary Table					
Point	Northing (Meters)	Easting (Meters)	Bearing	Distance (feet)	Remarks
					BEGINNING AT THE W 1/4 CORNER OF SEC 29 T48N R4W AND BEARING S75-29E 2,047.4 FEET (GIS CALCULATED) TO THE POB.
					BOUNDARY POB IS 50' FROM TRANSMISSION C.L.
					ALONG 1/16 SECTION LINE SEC 29 T48N R4W
					INTX W/ COPCO RESERVOIR HWL (2607.5 FEET)
					ALONG COPCO RESERVOIR HWL
					INTX W/ EAST LINE OF SEC 36 T48N R4W
					SOUTH ALONG SECTION LINE
					INTX W/ COPCO RESERVOIR HWL (2607.5 FEET)
					ALONG COPCO RESERVOIR HWL
					ALONG 1/4 SECTION LINE SEC 29 T48N R4W
					ALONG SOUTH LINE OF SEC 29 T48N R4W
			N44-38-30W	724	NW TO 100' OFFSET FROM CANAL C.L.
					ALONG CANAL BUFFER (100' FROM CANAL C.L.)
					ALONG 1/4 SECTION LINE
					ALONG 1/4 SECTION LINE
					INTX W/ ACCESS ROAD BUFFER (50' FROM C.L.)
					ALONG ACCESS ROAD BUFFER (50' FROM C.L.)
					ALONG WEST LINE OF SEC 31 T48N R4W
					ALONG 1/4 SECTION LINE
					ALONG 1/16 SECTION LINE
					ALONG SPILLWAY BUFFER (100' FROM C.L.)
					INTX W/ CANAL BUFFER (100' FROM CANAL C.L.)
					ALONG CANAL BUFFER (100' FROM CANAL C.L.)
					NE TO 1/4 SECTION CORNER
					ALONG 1/4 SECTION LINE
					INTX W/ TRANSMISSION LINE BUFFER (50' FROM C.L.)
					ALONG TRANSMISSION LINE BUFFER (50' FROM C.L.)
					INTX W/ SUBSTATION FENCE
					ALONG SUBSTATION FENCE
					INTX W/ TRANSMISSION LINE BUFFER (50' FROM C.L.)
					ALONG TRANSMISSION LINE BUFFER (50' FROM C.L.) TO POB

- Notes:**
1) Information in table is based on GIS derived coordinates and measurements and is not intended to represent station points and measurements established by ground surveys.
2) Coordinates and Bearings are in UTM Zone 10, NAD 83, meters.
3) Distances are in U.S. survey feet.
4) Project is located in the state of California, Mt. Diablo Meridian.

This revised project boundary exhibit was prepared for the application for amendment and partial transfer of the license for the Klamath Hydroelectric Project (FERC No. 2082). It supersedes the current exhibit sheets for the area where the Klamath Hydroelectric Project and the proposed Lower Klamath Project (FERC No. 14803) adjoin. The project boundary on this exhibit represents the same project boundary as shown on the approved Exhibit K sheets for the Fall Creek, Copco No. 1, and Copco No. 2 developments of the existing Klamath Hydroelectric Project, and adds the separate project boundaries where the Fall Creek transmission line corridor connects to the substation northwest of the Copco No. 1 powerhouse.

The project boundary represented on this drawing is developed with reasonable accuracy in accordance with FERC requirements***. Data was developed by PacifiCorp's GIS department from a variety of sources including Federal, State, County, and PacifiCorp GIS sources. No field surveys were conducted. The project boundary was initially digitized from scanned Exhibit K drawings that were georeferenced using sources such as digital USGS quad maps. Digital imagery was used in some areas to best fit the boundary to visible project features as indicated on the prior approved exhibits. Reasonable efforts have been made to ensure that positional accuracy conforms to National Map Accuracy Standards for maps at 1:24000 scale.

Public Land Survey data are approximately located and are based on the Willamette Meridian in Oregon and Mt. Diablo Meridian for California.

***This exhibit has not yet been reviewed by a licensed surveyor. Parcel boundaries and ownership are based on PacifiCorp records and deeds will be re-plotted or re-verified. Further efforts to review control data and property information are underway and changes may be necessary as new data becomes available.

Normal Full Pool Elevation (HWL).
Elevations are referenced to
USGS Datum (NGVD 1929).



Joint Application for License Amendment & License Transfer		Exhibit K - 4		Rev. 0a
		Lower Klamath Hydroelectric Project FERC No. 14803		
DESCRIPTION		Joint Application for License Transfer & License Amendment of Sept 23, 2016. Copco No. 1 and 2 Developments		
		Project Boundary Description		
DATE		Original Drawing Dated June 1, 2017		
OLD DRAWING				
NO				