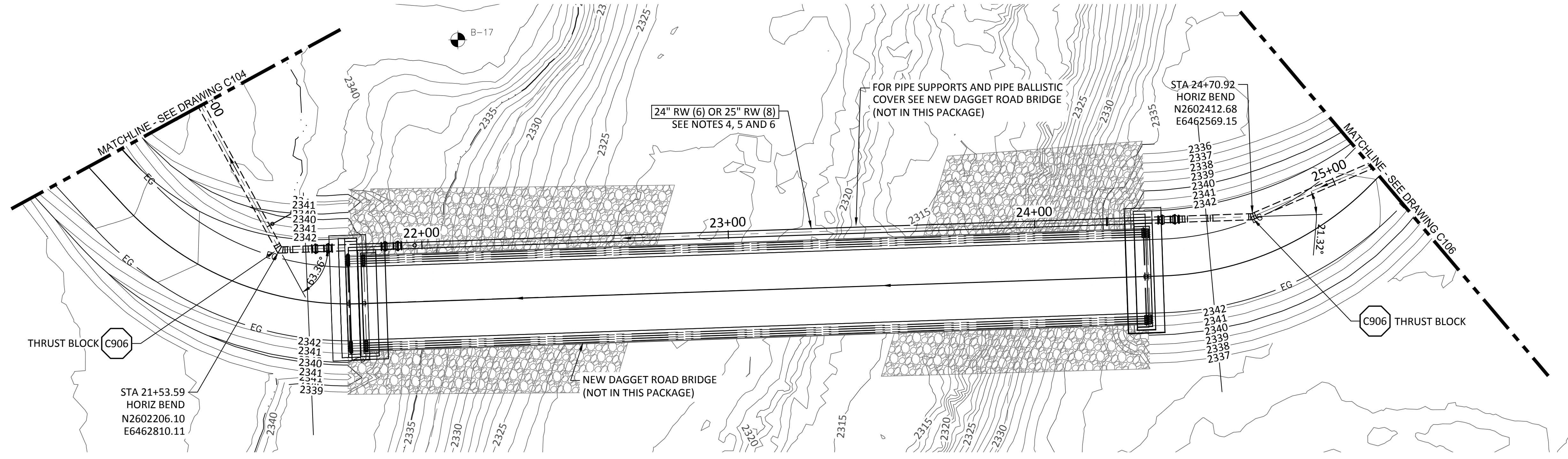


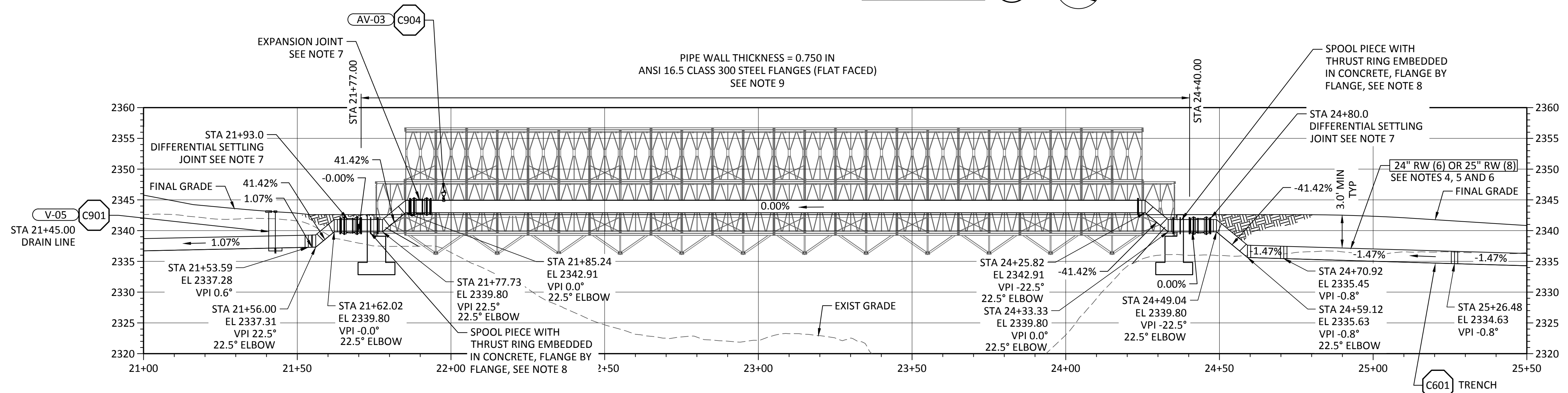
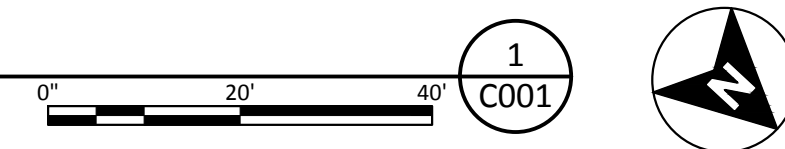
SHEET NOTES:

- SEE EC DWGS FOR EROSION AND SEDIMENT CONTROL MEASURES.
- ELEVATIONS SHOWN IN PIPELINE PROFILE ARE TO INVERT (FLOWLINE) OF PIPELINE UNLESS OTHERWISE NOTED.
- CONTRACTOR TO PROVIDE A MINIMUM OF 3.0 FT OF COVER OVER PIPELINE UNDER ROAD AND MINIMUM OF 2.5 FT OF COVER OUTSIDE OF ROAD.
- FOR PIPE SIZE AND MATERIAL OPTIONS SEE DWG G008.
- ALL STEEL PIPE END WELDS SHALL BE BUTT-WELDS PER DETAIL C703, UNO. FINISH LINE AND COAT PIPELINE OVER WELD AS REQUIRED BY SPECIFICATION SECTION 33 11 11.
- CONTRACTOR HAS OPTION TO PROVIDE HAND HOLES AT EACH JOINT LOCATION TO REPAIR INTERIOR LINING. FOR HAND HOLD DETAIL, SEE DETAIL C907.
- CONTRACTOR TO PROVIDE FL X FL FLEXIBLE EXPANSION JOINT. FLEXIBLE EXPANSION JOINT SHALL BE 24-IN DIA FL X FL EBAA IRON, INC FLEX-TEND FLEXIBLE EXPANSION JOINT ASSEMBLY NO. 424F20A-FURNISH WITH ANSI 300# FLANGES (350 PSI MINIMUM WORKING PRESSURE, A MINIMUM OF 2:1 SAFETY FACTOR FROM PUBLISHED SAFETY FACTOR SHALL APPLY TO THE WORKING PRESSURE) OR APPROVED EQUAL. FLEXIBLE EXPANSION JOINT SHALL ALLOW MINIMUM OF 2-INCHES OF TRAVEL AT EXPANSION JOINT. EXTERIOR SURFACES SHALL BE COATED WITH A MINIMUM OF 6 MILS OF FUSION BONDED EPOXY CONFORMING TO THE APPLICABLE REQUIREMENTS OF ANSI/AWWA C116/A21.16. APPROPRIATELY SIZED POLYETHYLENE SLEEVES, MEETING ANSI/AWWA C105/A21.5, SHALL BE INCLUDED FOR DIRECT BURIED APPLICATIONS. INTERIOR SURFACES (WETTED PARTS) SHALL BE LINED WITH A MINIMUM OF 15 MILS FUSION BONDED EPOXY PER AWWA C213). ALL EXPANSION AND DIFFERENTIAL SETTLING JOINTS SHALL BE FURNISHED WITH FACTORY INSTALLED BONDING CONDUCTORS. CONTRACTOR SHALL BOND THE JOINTS TO THE STEEL PIPELINE PER DETAIL C902 AND THE JOINT MANUFACTURERS RECOMMENDATIONS. IF PIPE MATERIAL 8 (25" PIPE) IS USED, A 24" PIPE FLANGE SHALL BE INSTALLED ON THE PIPELINE AND SHALL BE REAMED TO PROVIDE CLEARANCE FOR 25" PIPE. THE PIPELINE FLANGE SHALL BE WELDED TO THE 25" PIPE PER AWWA D 207. THRUST RING (300# FLANGE WELDED TO PIPE, CAST INTO CONCRETE) ON EACH END OF BRIDGE.
- INSTALL BONDING JUMPERS ACCROSS ALL FLANGED JOINTS AND NON WELDED CONNECTIONS PER DETAIL C902.



PLAN

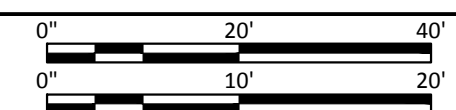
SCALE: 1"= 20'



PROFILE

SCALE: HORIZ 1"= 20'

VERT 1"= 10'



REV	DATE	BY	DESCRIPTION
1	6/10/22	JAL	REVISED - ISSUED FOR CONSTRUCTION
0	5/25/22	JAL	ISSUED FOR CONSTRUCTION

WARNING

 IF THIS BAR DOES NOT MEASURE 1" THEN DRAWING IS NOT TO SCALE.



KLAMATH RIVER RENEWAL CORPORATION	DESIGNED <u>J. BURNS</u>
CITY OF YREKA WATER LINE	DRAWN <u>R. WOOD</u>
WATERLINE PLAN AND PROFILE 6	CHECKED <u>J. LOWY</u>
	PROJECT DATE <u>5/25/22</u>

DRAWING	C105
---------	-------------

Path: C:\Vault\20\Klamath River Renewal Corp\City of Yreka Water Line\C105.dwg Plot date: Jun 10, 2022 12:28pm, CAD User: JoeNeves