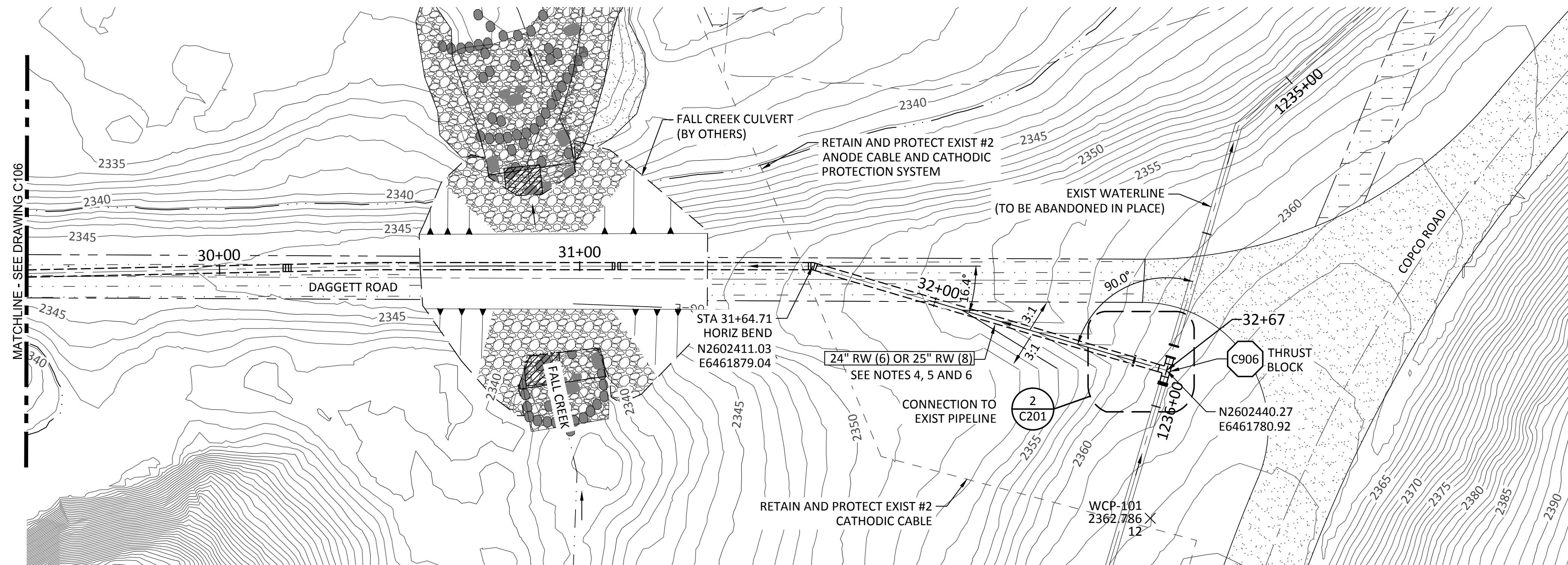


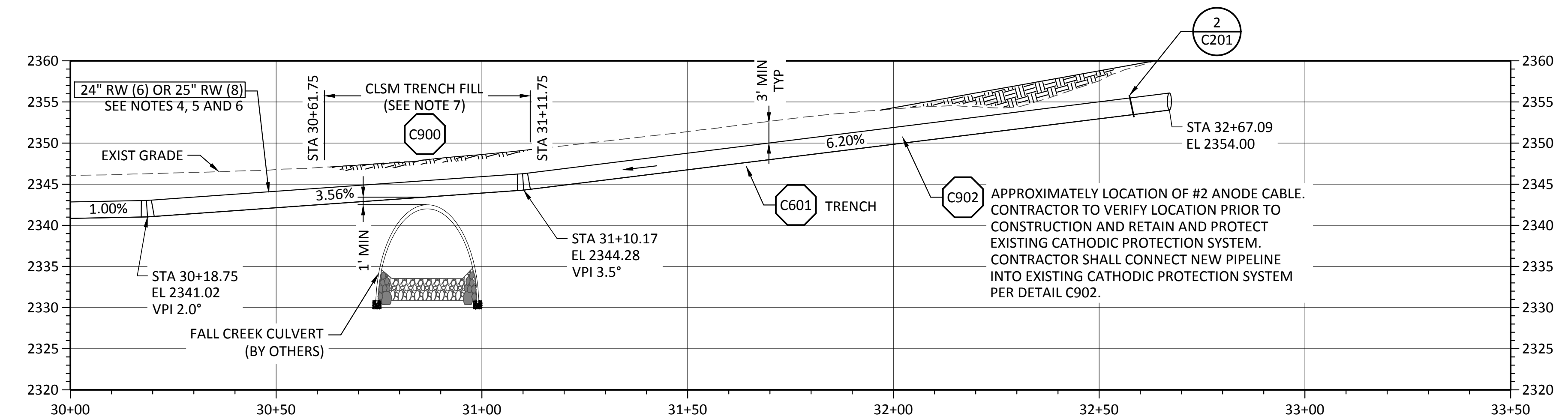
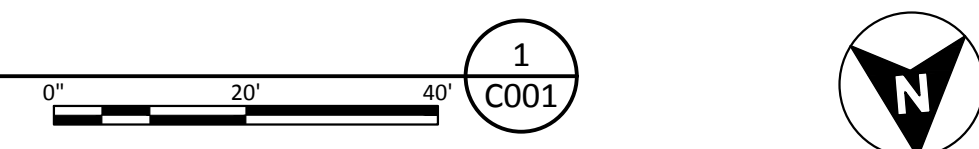
SHEET NOTES:

1. SEE EC DWGS FOR EROSION AND SEDIMENT CONTROL MEASURES.
2. ELEVATIONS SHOWN IN PIPELINE PROFILE ARE TO INVERT (FLOWLINE) OF PIPELINE UNLESS OTHERWISE NOTED.
3. CONTRACTOR TO PROVIDE A MINIMUM OF 3FT OF COVER OVER PIPELINE UNDER THE ROAD AND 2.5 FT MIN OUTSIDE OF ROAD. FOR PIPE SIZE AND MATERIAL OPTIONS SEE DWG G008.
4. ALL STEEL PIPE END WELDS SHALL BE BUTT-WELDS PER DETAIL C703, UNO. FINISH LINE AND COAT PIPELINE OVER WELD AS REQUIRED BY SPECIFICATION SECTION 33 11 11.
5. CONTRACTOR HAS OPTION TO PROVIDE HAND HOLES AT EACH JOINT LOCATION TO REPAIR INTERIOR LINING. FOR HAND HOLD DETAIL, SEE DETAIL C907.
7. CLSM TRENCH BACKFILL SHALL BE USED WHERE PIPE COVER UNDER ROAD IS LESS THAN 3 FT.



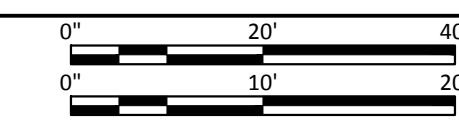
PLAN

SCALE: 1" = 20'



PROFILE

SCALE: HORIZ 1" = 20'
VERT 1" = 10'



| REV | DATE | BY | DESCRIPTION |
|-----|---------|-----|-----------------------------------|
| 1 | 6/10/22 | JAL | REVISED - ISSUED FOR CONSTRUCTION |
| 0 | 5/25/22 | JAL | ISSUED FOR CONSTRUCTION |

WARNING
IF THIS BAR DOES NOT MEASURE 1" THEN DRAWING IS NOT TO SCALE.



| | |
|-----------------------------------|--|
| KLAMATH RIVER RENEWAL CORPORATION | |
| CITY OF YREKA WATER LINE | |
| WATERLINE PLAN AND PROFILE 8 | |

| | |
|--------------|----------|
| DESIGNED | J. BURNS |
| DRAWN | R. WOOD |
| CHECKED | J. LOWY |
| PROJECT DATE | 5/25/22 |

DRAWING
C107
JOB NO: 000000

Path: C:\Vault\20\Klamath River Renewal Corp\City of Yreka Water Line\C107.dwg Plot date: Jun 10, 2022 12:29pm. CAD User: JoeNeves