

1/4" EXTRUDED TROUGH SECTION
W/INTEGRAL CONT. ANCHOR FLANGE
& GROOVE FOR GASKET/CUSHION
FRAME MAT'L: ALUMINUM 6063-T5

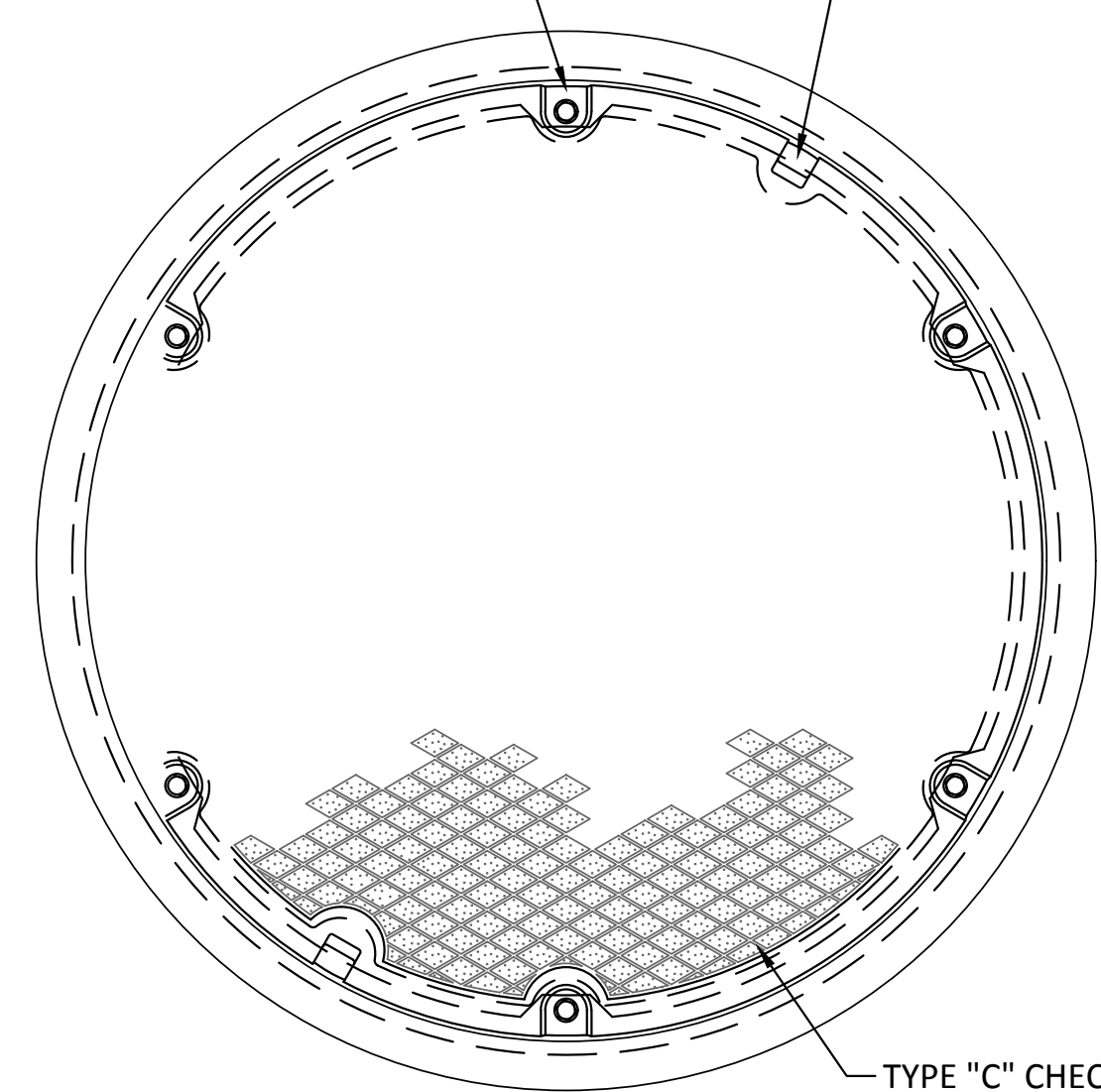
DEBRIS FREE FRAME RAIL

SCALE: NTS

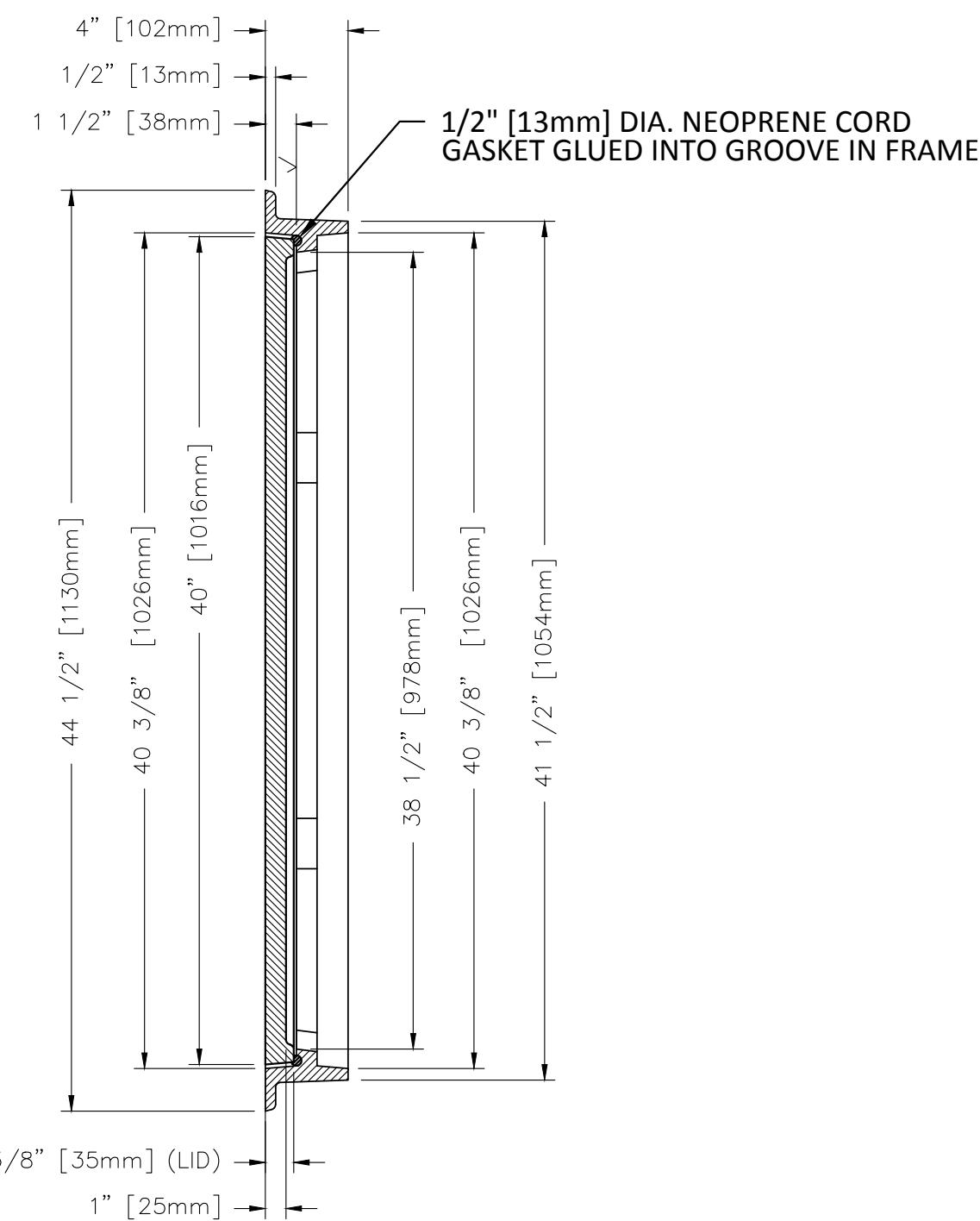
10
C205

DRILL, TAP AND ASSEMBLE FOR (6)
1/2-13UNC X 2 1/4 STNLS. STL. HEX.
HD. CAPSCREWS W/ STNLS. STL. AND
REINFORCED NEOPRENE WASHERS

(2) CONCEALED PICK HOLES
PER NF-22642



TYPE "C" CHECKERED LID DESIGN w/
PERMAGRIP SURFACE TEXTURE



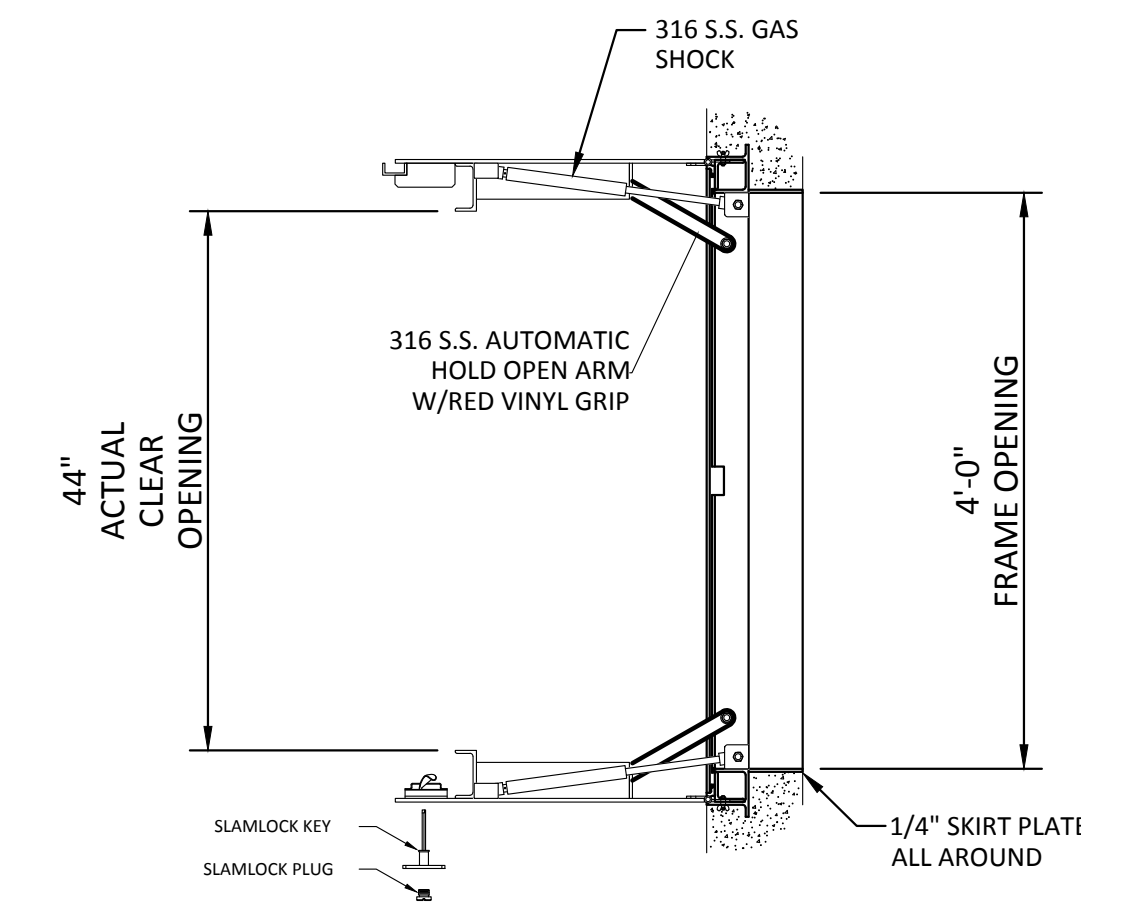
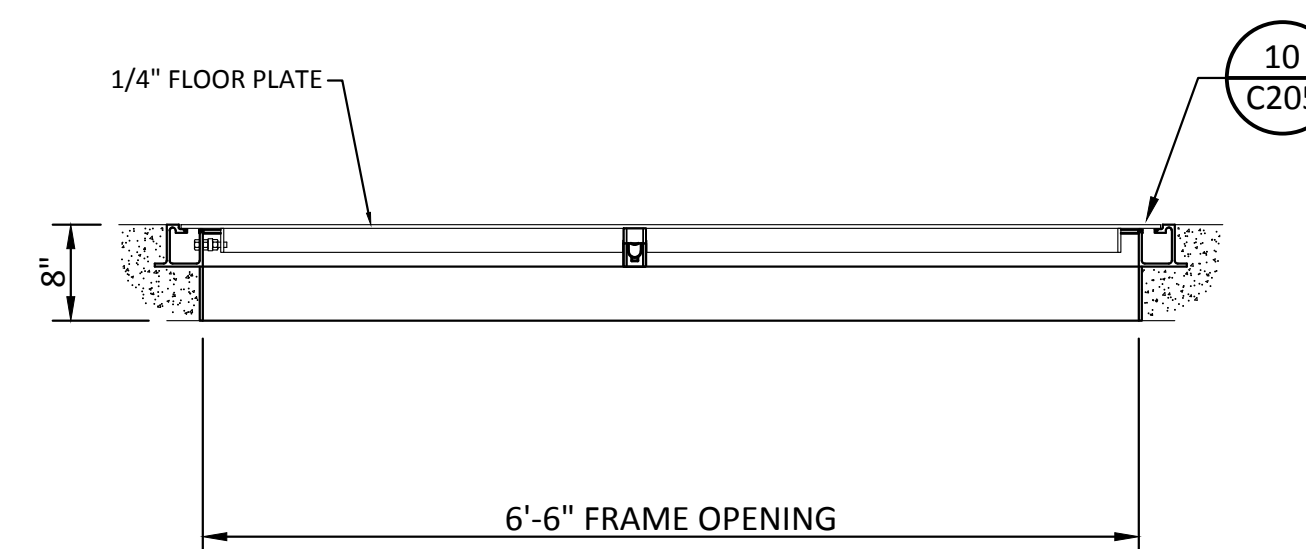
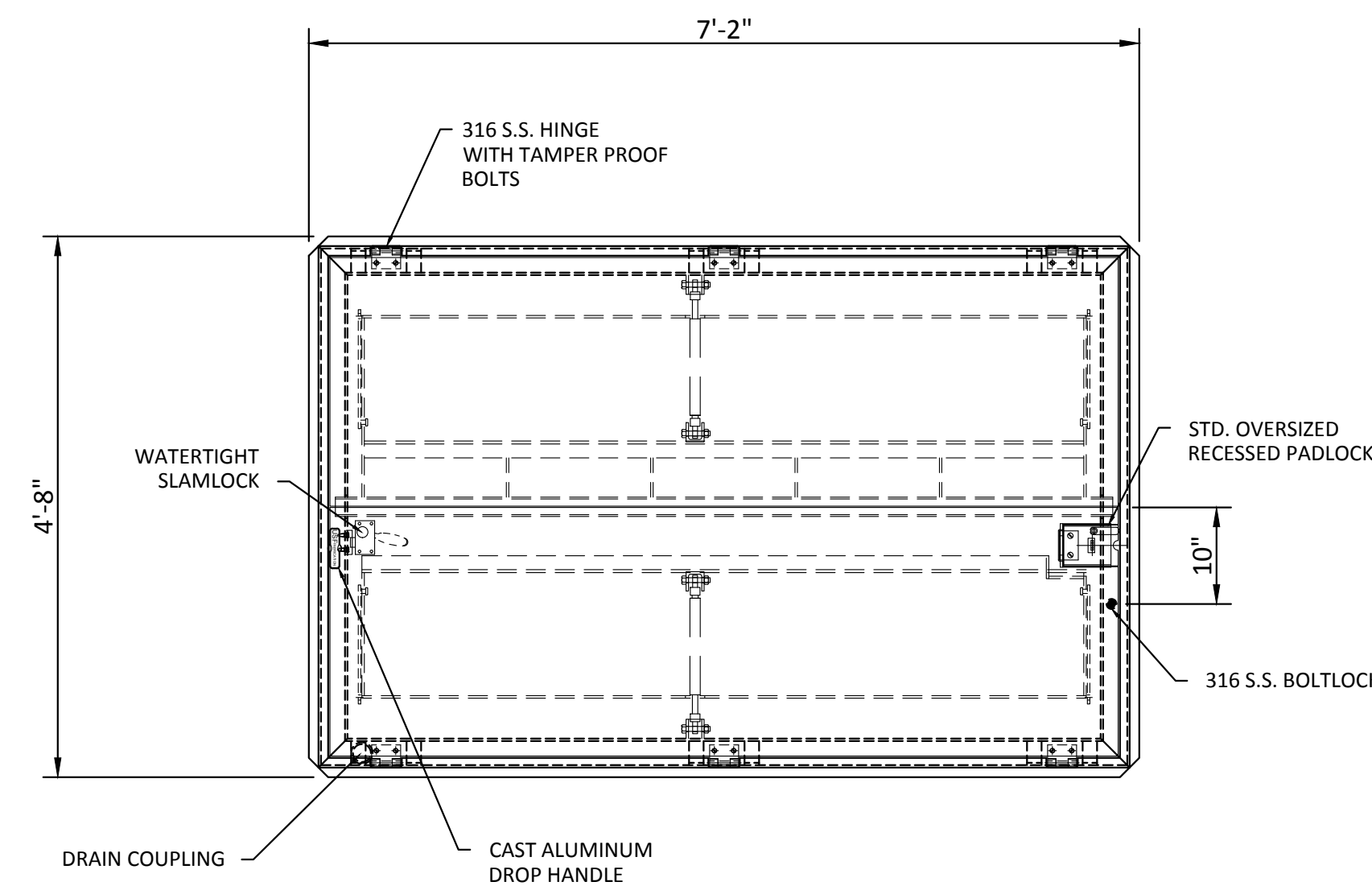
NOTE: ALL DIMENSIONS SHOWN ARE IN ENGLISH AND [METRIC]
MATERIAL: CAST GRAY IRON ASTM A-48, CLASS 35B
FINISH: NO PAINT
WEIGHT: FRAME 145#, LID 325#

(NEENAH FRAME 6461-0022 AND LID
6461-0292 OR APPROVED EQUAL)

MANHOLE FRAME AND LID

SCALE: NTS

8
C204



SELECTED FEATURES

1. DEBRIS FREE FRAME
2. S.S GAS SHOCKS
3. SLAMLOCK
4. SKIRT FOR 8" DEEP SLAB
5. OVERSIZED RECESSED PADLOCK
6. BITUMINOUS COATING

NOTES

1. MATERIAL: ALUMINUM
2. FINISH: MILL
3. LOADING: 300 PSF
4. 316 SS NUTS & BOLTS
5. AREA OF FRAME IN CONTACT WITH CONCRETE TO BE PAINTED WITH BITUMINOUS COATING
6. APPROX HATCH WT: 299.74 LBS

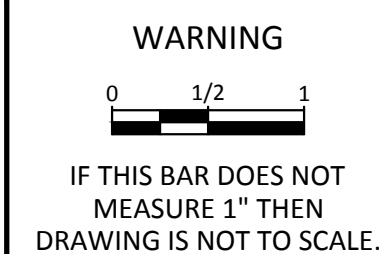
(US FABRICATIONS TPD 78 X 48 ALUMINUM
MODEL # 1000200664 OR APPROVED EQUAL)

78"x48" HATCH

SCALE: NTS

9
C200

REV	DATE	BY	DESCRIPTION
1	6/10/22	JAL	REVISED - ISSUED FOR CONSTRUCTION
0	5/25/22	JAL	ISSUED FOR CONSTRUCTION



KLAMATH RIVER RENEWAL CORPORATION	
CITY OF YREKA WATER LINE	
HATCH DETAILS	

DESIGNED	J. BURNS
DRAWN	R. WOOD
CHECKED	J. LOWY
PROJECT DATE	5/25/22

DRAWING
C205