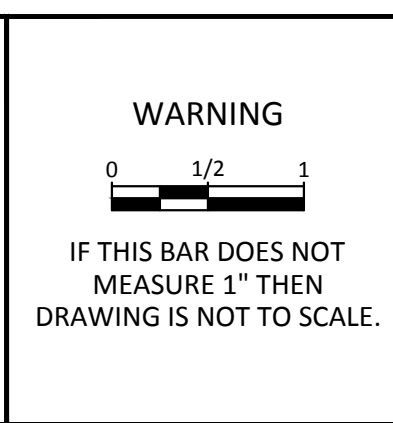
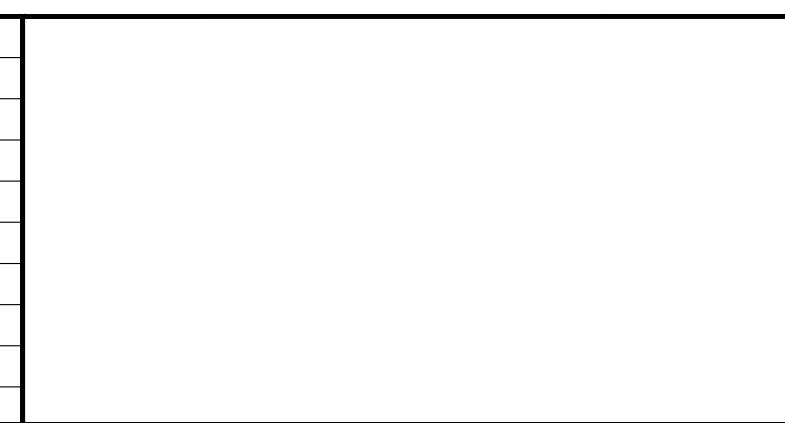


FLUID ABBREVIATION	FUNCTION		ALLOWABLE PIPING MATERIAL GROUP NO. (SEE NOTE 1 AND 4)				FIELD TEST REQUIREMENTS (SEE NOTE 3 AND NOTE 4)			PIPING MATERIAL SCHEDULE (SEE NOTE 1)				TYPICAL PIPE DESIGNATION:
	THIS LIST MAY INCLUDE FLUIDS NOT USED IN THIS PROJECT		EXPOSED PIPING (SEE NOTE 14)		BURIED PIPING (SEE NOTE 13)		MINIMUM TEST PRESSURE PSI	TEST MEDIUM	LEAKAGE ALLOWANCE (SEE NOTE 2)	GROUP NO.	PIPE MATERIAL	FITTINGS / JOINTS	LININGS AND COATINGS (SEE NOTE 13)	
	4" DIA AND SMALLER	6" DIA AND LARGER	4" DIA AND SMALLER	6" DIA AND LARGER										
										2	STEEL, ASTM A53, SCHEDULE 40 FOR 6" & SMALLER, BLACK WELDED GALVANIZED, HOT-DIP.	3" AND SMALLER, MALLEABLE IRON, ASME B16.3, THREADED, BANDED, GALVANIZED. 4" AND LARGER, ASME B16.5 CLASS 300, FLANGED.	GALVANIZED, SEE SECTION 40 23 15 (PVC TAPE COAT WHEN BURIED)	NOTES: NOTE 1 ALTHOUGH SEVERAL PIPE MATERIAL GROUPS MAY BE LISTED ON THIS SHEET FOR A GIVEN FLUID SERVICE, CONTRACTOR SHALL PROVIDE ONLY THE PIPE MATERIAL GROUP SHOWN ON THE DRAWINGS AND SPECIFIED FOR THAT FLUID SERVICE. NOTE 2 LEAKAGE ALLOWANCE IS AS FOLLOWS A. PIPES SO DESIGNATED SHALL SHOW ZERO LEAKAGE. B. PIPES SO DESIGNATED SHALL SHOW ZERO LEAKAGE FOR UNBURIED PIPE AND NOT MORE THAN 0.02 GALLON PER HOUR PER INCH DIAMETER PER 100 FEET OF BURIED PIPE. C. PIPES SO DESIGNATED SHALL NOT SHOW A LEAKAGE OF MORE THAN 0.15 GALLON PER HOUR PER INCH OF DIAMETER PER 100 FEET OF PIPE. D. PIPES SO DESIGNATED SHALL NOT SHOW A LOSS OF PRESSURE OF MORE THAN 5 PERCENT. E. PIPE SO DESIGNATED SHALL NOT SHOW A LOSS OF VACUUM OF MORE THAN 4 INCHES MERCURY COLUMN. NOTE 3 FOR FIELD TEST PROCEDURES AND ADDITIONAL TEST REQUIREMENTS, SEE PIPING SECTION OF SPECIFICATIONS. NOTE 4 NO SUBSTITUTIONS U.N.O. IN THE SPECIFICATIONS. NOTE 5 NOT USED. NOTE 6 STATIC WATER TEST WITH SURFACE 5 FEET ABOVE HIGH POINT OF PIPE. NOTE 7 INSPECTION AND TESTING SHALL BE IN ACCORDANCE WITH APPLICABLE PLUMBING CODE. NOTE 8 NO APPARENT LEAKS UNDER NORMAL OPERATING CONDITIONS. NOTE 9 INSPECTION AND TESTING SHALL BE IN ACCORDANCE WITH APPLICABLE NATIONAL FIRE PROTECTION ASSOCIATION STANDARDS. NOTE 10 PIPING MATERIALS SHALL BE IN ACCORDANCE WITH NATIONAL FIRE PROTECTION ASSOCIATION STANDARDS. NOTE 11 FOR VALVES 4" AND LARGER SEE VALVE SCHEDULE FOR SPECIAL VALVES SEE SPECIFICATIONS. NOTE 12 CHANGE IN PIPING MATERIAL GROUP NUMBER IS INDICATED THUS: NOTE 13 FOR FULL PIPE LINING AND COATING REQUIREMENTS, SEE SPECIFICATIONS. NOTE 14 EXPOSED OUTDOOR PIPING SHALL BE PAINTED IN ACCORDANCE WITH SPECIFICATIONS. COLORS TO BE SELECTED BY OWNER. NOTE 15 NOT USED NOTE 16 NOT USED NOTE 17 FOR HDPE PIPING THE SIZE OF PIPE SHOWN ON DRAWING CALL-OUTS SHALL BE THE MINIMUM INSIDE DIAMETER. PIPE WALL THICKNESS SHALL BE PER DR RATING REQUIREMENT.
										6	STEEL, A53, GRADE A STD, SEAMLESS, BLACK.	FABRICATED BUTT WELD OR FLG JOINTS, AWWA C208 MODIFIED PER SECTION 33 11 11.	EPOXY COATED PER AWWA C210, SEE SECTION 31 11 11	
RW	RAW WATER	--	8 OR 6	--	8 OR 6	375	WATER	(A)						
VT	VENT AIR	2	--	2	--	15 IN Hg	AIR/VAC	(A) (D)			8	SPIRAL WELDED STEEL PIPE, 3/16" WALL THICKNESS (AWWA C200 & MODIFIED PER SECTION 331111) (ALL PIPE CALLOUT DIAMETERS ARE 'OD' OF STL SHELL)	FABRICATED BUTT WELD OR FLG JOINTS, AWWA C208 MODIFIED PER SECTION 33 11 11.	CEMENT MORTAR LINED PER AWWA C205, SEE SECTION 33 11 11

VALVE SCHEDULE							
VALVE NUMBER	LOCATION AND SERVICE	BODY & DISC MATERIALS	VALVE TYPE, ENDS	DIAMETER (IN)	MIN. WORKING PRESSURE (PSIG)	VALVE SHAFT/STEM AND HARDWARE	ACTUATOR TYPE, (NORMAL VALVE POSITION)
V-01	RW ISOLATION, 45-60F	CARBON STEEL (FBE COATED AND LINED), DUCTILE IRON (FBE COATED AND LINED), OR ASTM 2205 DUPLEX STAINLESS STEEL	HIGH PERFORMANCE BUTTERFLY VALVE, ASME/ANSI B16.5 CLASS 300 FLANGE	24	360	SEE SPEC SECTION 43 25 02 BUTTERFLY VALVES	HANDWHEEL (OPEN)
V-02	NOT USED						
V-03	DRAIN PIPE/RW DRAIN, 45-60F	316 STAINLESS STEEL, CARBON STEEL OR DUCTILE IRON	HIGH PERFORMANCE BUTTERFLY VALVE, LUGGED DRILLING OR FLANGED	4	360	SEE SPEC SECTION 43 25 02 BUTTERFLY VALVES	WORM GEAR BURIED SERVICE OPERATOR WITH 2" OPERATOR NUT. EXPOXY COATING ON BURIED ACTUATOR (8 +/-4 DFT MILS TNEMIC 141 EXPOXY) (CLOSED)
V-04	DRAIN PIPE/RW DRAIN, 45-60F	316 STAINLESS STEEL, CARBON STEEL OR DUCTILE IRON	HIGH PERFORMANCE BUTTERFLY VALVE, LUGGED DRILLING OR FLANGED	4	360	SEE SPEC SECTION 43 25 02 BUTTERFLY VALVES	WORM GEAR BURIED SERVICE OPERATOR WITH 2" OPERATOR NUT. EXPOXY COATING ON BURIED ACTUATOR (8 +/-4 DFT MILS TNEMIC 141 EXPOXY) (CLOSED)
V-05	DRAIN PIPE/RW DRAIN, 45-60F	316 STAINLESS STEEL, CARBON STEEL OR DUCTILE IRON	HIGH PERFORMANCE BUTTERFLY VALVE, LUGGED DRILLING OR FLANGED	4	360	SEE SPEC SECTION 43 25 02 BUTTERFLY VALVES	WORM GEAR BURIED SERVICE OPERATOR WITH 2" OPERATOR NUT. EXPOXY COATING ON BURIED ACTUATOR (8 +/-4 DFT MILS TNEMIC 141 EXPOXY) POLYWRAP VALVE AND OPERATOR. (CLOSED)
V-06	DRAIN PIPE/RW DRAIN, 45-60F	316 STAINLESS STEEL, CARBON STEEL OR DUCTILE IRON	HIGH PERFORMANCE BUTTERFLY VALVE, LUGGED DRILLING OR FLANGED	4	360	SEE SPEC SECTION 43 25 02 BUTTERFLY VALVES	WORM GEAR BURIED SERVICE OPERATOR WITH 2" OPERATOR NUT. EXPOXY COATING ON BURIED ACTUATOR (8 +/-4 DFT MILS TNEMIC 141 EXPOXY). POLYWRAP VALVE AND OPERATOR. (CLOSED)
AV-01	AIR & VAC COMBINATION	DUCTILE IRON (VALVE SHALL MEET AWWA C512)	3" COMBINATION AIR RELEASE VALVE, 3" NPT INLET/OUTLET	3	360	3" NPT INLET & OUTLET,#37 0.104 AVO, S/S TRIM, BUNA-N SEAT, STEEL BOLTS & NUTS	SINGLE BODY, LINED AND COATED WITH 8 +/- 4 MILS DFT OF TNEMEC 141 EPOXY
AV-02	AIR & VAC COMBINATION	DUCTILE IRON (VALVE SHALL MEET AWWA C512)	3" COMBINATION AIR RELEASE VALVE, 3" NPT INLET/OUTLET	3	360	3" NPT INLET & OUTLET,#37 0.104 AVO, S/S TRIM, BUNA-N SEAT, STEEL BOLTS & NUTS	SINGLE BODY, LINED AND COATED WITH 8 +/- 4 MILS DFT OF TNEMEC 141 EPOXY
AV-03	AIR & VAC COMBINATION	DUCTILE IRON W/ THERMAXX INSULATION JACKET OR APPROVED EQUAL (VALVE SHALL MEET AWWA C512)	3" COMBINATION AIR RELEASE VALVE, 3" NPT INLET/OUTLET	3	360	3" NPT INLET & OUTLET,#37 0.104 AVO, S/S TRIM, BUNA-N SEAT, STEEL BOLTS & NUTS	SINGLE BODY, LINED AND COATED WITH 8 +/- 4 MILS DFT OF TNEMEC 141 EPOXY
AV-04	NOT USED						

REV	DATE	BY	DESCRIPTION
1	6/10/22	JAL	REVISED - ISSUED FOR CONSTRUCTION
0	5/25/22	JAL	ISSUED FOR CONSTRUCTION



KLAMATH RIVER RENEWAL CORPORATION
CITY OF YREKA WATER LINE

PIPING AND VALVE SCHEDULE

DESIGNED <u>J. BURNS</u>	G007
DRAWN <u>R. WOOD</u>	
CHECKED <u>J. LOWY</u>	
PROJECT DATE <u>5/25/22</u>	

Path: C:\Vault20\Klamath River Renewal Corp\City of Yreka Water Line\G007.dwg Plot date: Jun 10, 2022 12:24pm, CAD User: JoeNaves