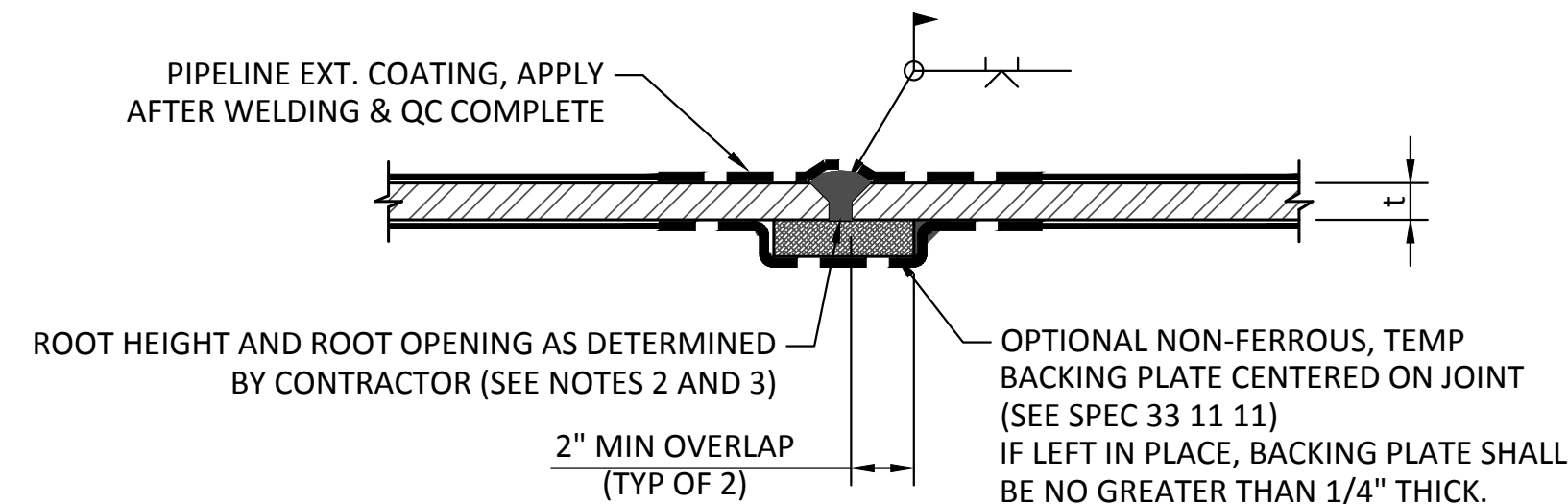


BURIED APPURTENANCE	STRIPE COLOR (DEFLECTIVE TAPE)
ISOLATION VALVE	BLUE & WHITE STRIPED
COMBINATION AIR RELEASE/ VACUUM VALVE	BLUE
BLOW-OFF	YELLOW
ACCESS MANWAY	GREEN
FIBER OPTICS CABEL	ORANGE
CORROSION TEST STATION	FLUORESCENT GREEN

- NOTES:
- MARKER POSTS SHALL BE OFFSET 5'-0" FROM ACTUAL APPURTANCES LOCATION UNLESS INDICATED OTHERWISE.
  - EXACT LOCATIONS OF MARKER POSTS SHALL BE FIELD VERIFIED BY THE CONTRACTOR AND APPROVED BY THE ENGINEER.

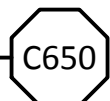


**SINGLE BEVEL - BUTT WELD JOINT (FOR  $t \leq 0.625$ ") EXT WELD (W/OPTIONAL BACKING PLATE)**

- NOTES:
- FIELD APPLIED JOINT LINING PROTECTION REQUIRED FOR SHOP-LINED PIPE.
  - CONTRACTOR SHALL DEVELOP DETAILS OF CJP WELDS IN ACCORDANCE W/ SPEC 33 11 11. PRE-QUALIFIED CJP WELDS IN ACCORDANCE W/ SECTION VIII OF THE ASME BOILER AND PRESSURE VESSEL CODE OR TABLE 8-2 OF THE AISC STEEL CONSTRUCTION MANUAL MAY BE UTILIZED.
  - INTERIOR OR EXTERIOR BACK-GOUGING OF BUTT WELD NOT REQUIRED UNLESS SPECIFICALLY CALLED FOR IN SECTION 33 11 11.

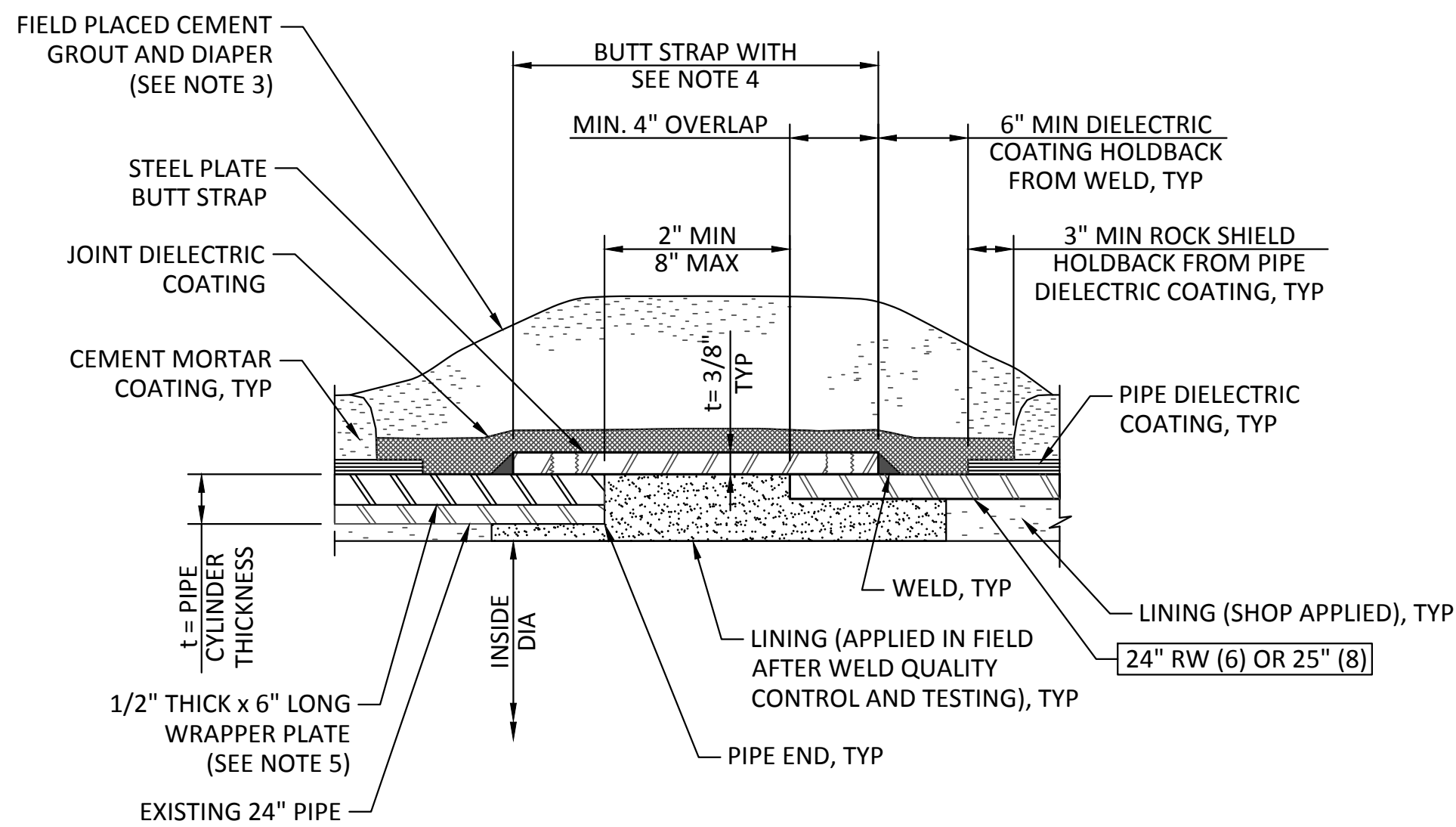
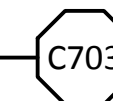
**PIPELINE MARKER**

SCALE: NTS



**STEEL PIPE - BUTT WELD JOINT (SINGLE OUTSIDE BEVEL)**

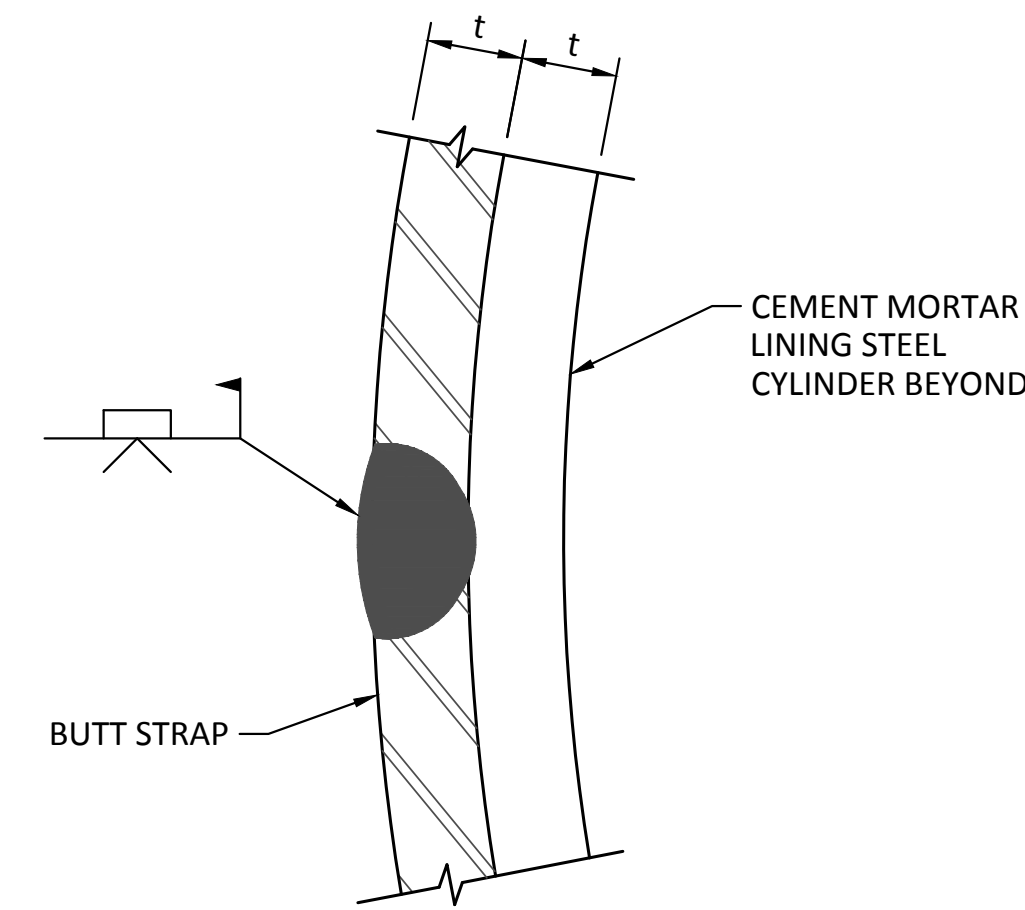
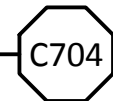
SCALE: NTS



- NOTES:
- CONTRACTOR SHALL CONDUCT AN AIR/SOAP SOLUTION LEAK TEST AT 40 PSI AIR PRESSURE IN ADDITION TO DYE PENETRANT OR MAGNETIC PARTICLE TESTING PERFORMED BY THE CONSTRUCTION MANAGER. IF LEAKS ARE DETECTED, REPAIR AND RETEST THE WELDS UNTIL THERE ARE NO DEFECTS. PLUG HOLES WITH A THREADED OR WELDED PLUG AT COMPLETION OF TEST AND COAT AS SHOWN. TAP HOLES MAY BE ON INSIDE OR OUTSIDE OF JOINT.
  - FOR FIELD WELDING OF INDIVIDUAL BUTT STRAP PIECES TO EACH OTHER, SEE DETAIL C705.
  - FIELD PLACED CEMENT GROUT AND DIAPER IS NOT REQUIRED WHERE THE PIPE IS FULLY ENCASED IN CONTROLLED LOW STRENGTH MATERIAL (CLSM) OR CONCRETE.
  - UNLESS OTHERWISE NOTED, BUTT STRAP WIDTH SHALL CONFORM TO THE LIMITATIONS SHOWN FOR PIPE END SEPARATION AND STEEL OVERLAP REQUIREMENTS.
  - WRAPPER PLATE SHALL BE OMITTED IF PIPE MATERIAL 6 (24" DIAMETER) IS USED.

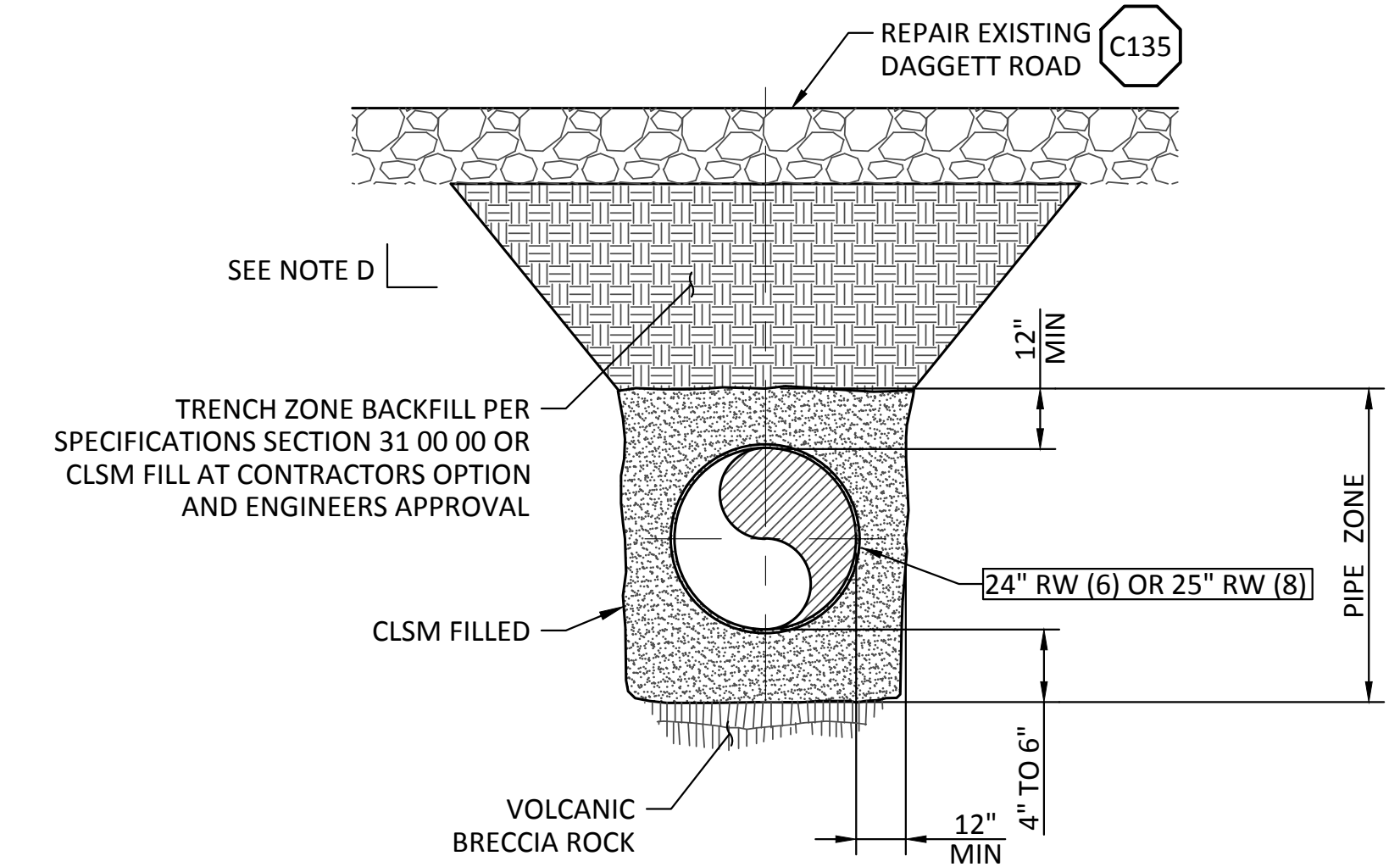
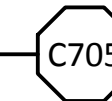
**EXISTING TO NEW BUTT STRAP JOINT (WSP - FLEXIBLE/DIELECTRIC COATING SYSTEM)**

SCALE: NTS



**BUTT STRAP SPLICE**

SCALE: NTS



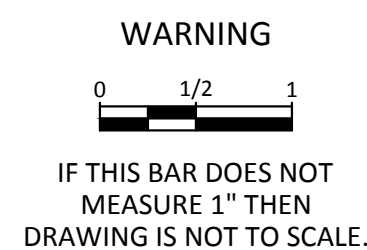
- A. THE NEED FOR PROTECTIVE SYSTEMS, AND EXCAVATION SLOPES SHALL BE DETERMINED CONSIDERING APPLICABLE LOCAL, STATE AND FEDERAL (OSHA) SAFETY STANDARDS AND REGULATIONS, AND GEOTECHNICAL CONSULTANTS' RECOMMENDATIONS.
- B. PROTECTIVE SYSTEMS SHALL BE DESIGNED AND BUILT IN ACCORDANCE WITH THE APPLICABLE LOCAL, STATE AND FEDERAL (OSHA) SAFETY STANDARDS AND REGULATIONS.
- C. SUPPORTING DOCUMENTATION SHALL BE SUBMITTED TO THE ENGINEER REGARDING PIPE DESIGN AND COMPLIANCE WITH APPLICABLE LOCAL, STATE AND FEDERAL (OSHA) SAFETY STANDARDS.
- D. UNSUPPORTED VERTICAL AND/OR SLOPING TRENCH WALL SLOPES SHALL NOT BE STEEPER THAN ALLOWED BY APPLICABLE LOCAL, STATE AND FEDERAL (OSHA) SAFETY STANDARDS AND REGULATIONS, UNLESS SUPPORTING DOCUMENTATION IS SUBMITTED, ACCORDING TO AFOREMENTIONED SAFETY STANDARDS.
- E. TRENCH SECTIONS OTHER THAN THE TYPICAL SECTIONS SHOWN MAY BE UTILIZED PROVIDED THEY COMPLY WITH APPLICABLE LOCAL, STATE AND FEDERAL (OSHA) SAFETY STANDARDS AND REGULATIONS. DOCUMENTATION SUPPORTING THIS COMPLIANCE AND PIPE DESIGN CALCULATIONS SHALL BE SUBMITTED TO THE ENGINEER.
- F. IF DURING CONSTRUCTION, THE WATER TABLE IS DISCOVERED TO BE ABOVE THE TRENCH BOTTOM, THE ENGINEER SHALL BE NOTIFIED, AND APPROPRIATE DEWATERING SHALL BE IMPLEMENTED TO LOWER THE WATER LEVEL BELOW THE TRENCH BOTTOM. THE BACKFILL MATERIAL SHALL BE ACCORDING TO THE EARTHWORK SECTIONS OF THE SPECIFICATIONS, OR AS ORDERED BY THE ENGINEER.

**CLSM FILLED PIPE TRENCH**

SCALE: NTS



REV	DATE	BY	DESCRIPTION
1	6/10/22	JAL	REVISED - ISSUED FOR CONSTRUCTION
0	5/25/22	JAL	ISSUED FOR CONSTRUCTION



KLAMATH RIVER RENEWAL CORPORATION  
CITY OF YREKA WATER LINE  
CIVIL STANDARD DETAILS 2

DESIGNED J. BURNS  
DRAWN J. CHASE  
CHECKED J. LOWY  
PROJECT DATE 5/25/22

DRAWING  
**GC003**